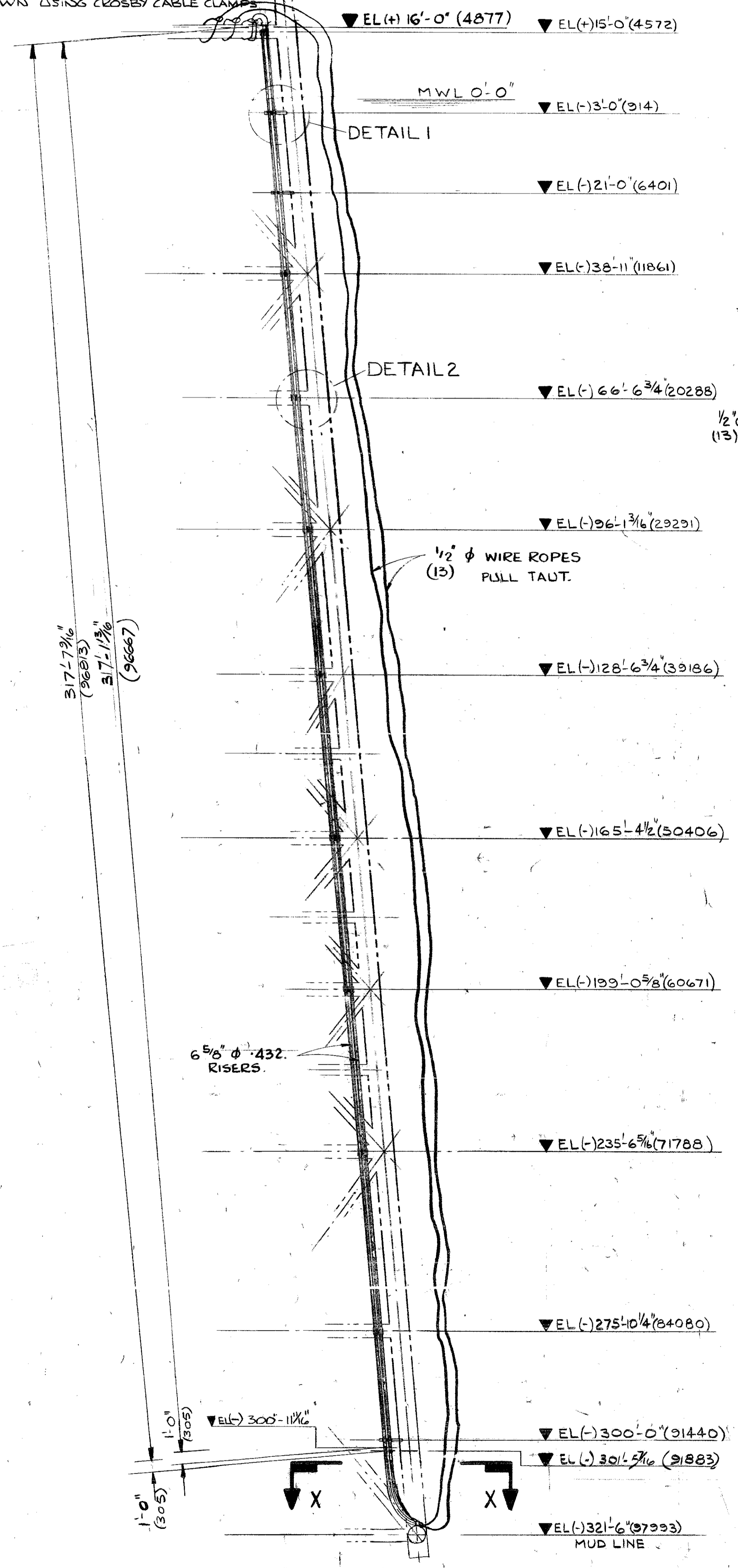
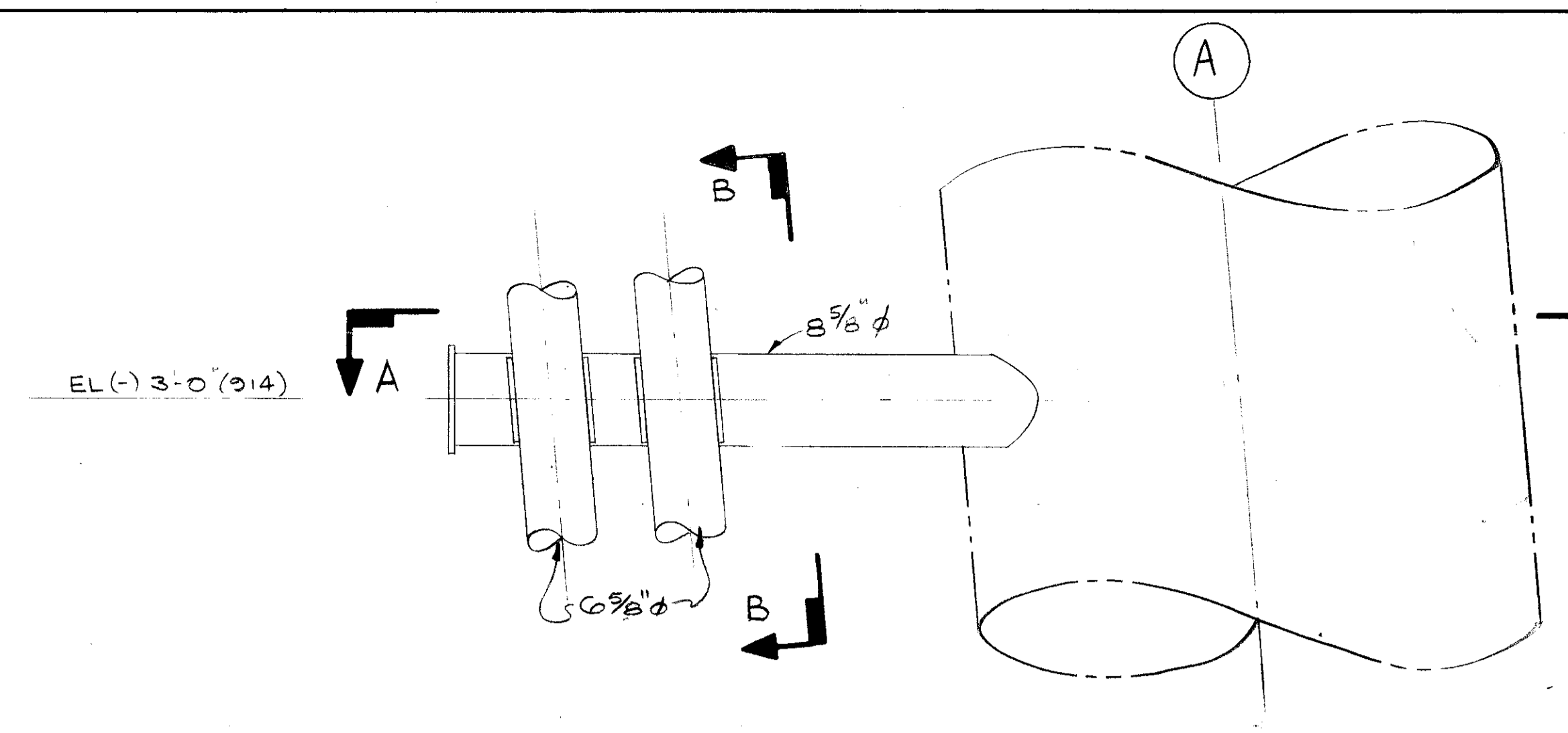


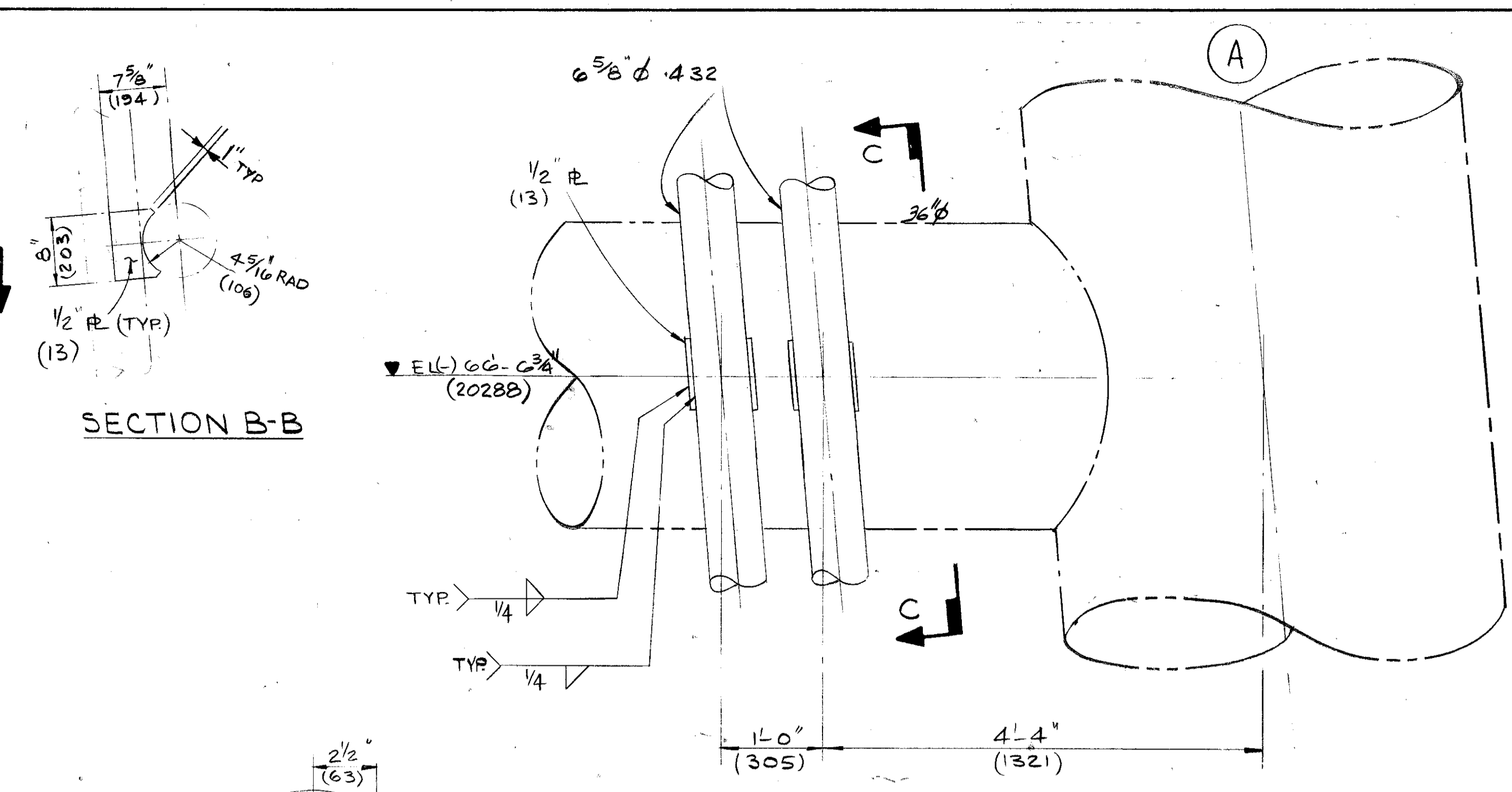
TIE OFF WIRE ROPE ENDS TO MAIN MEMBER AS SHOWN USING CROSBY CABLE CLAMPS



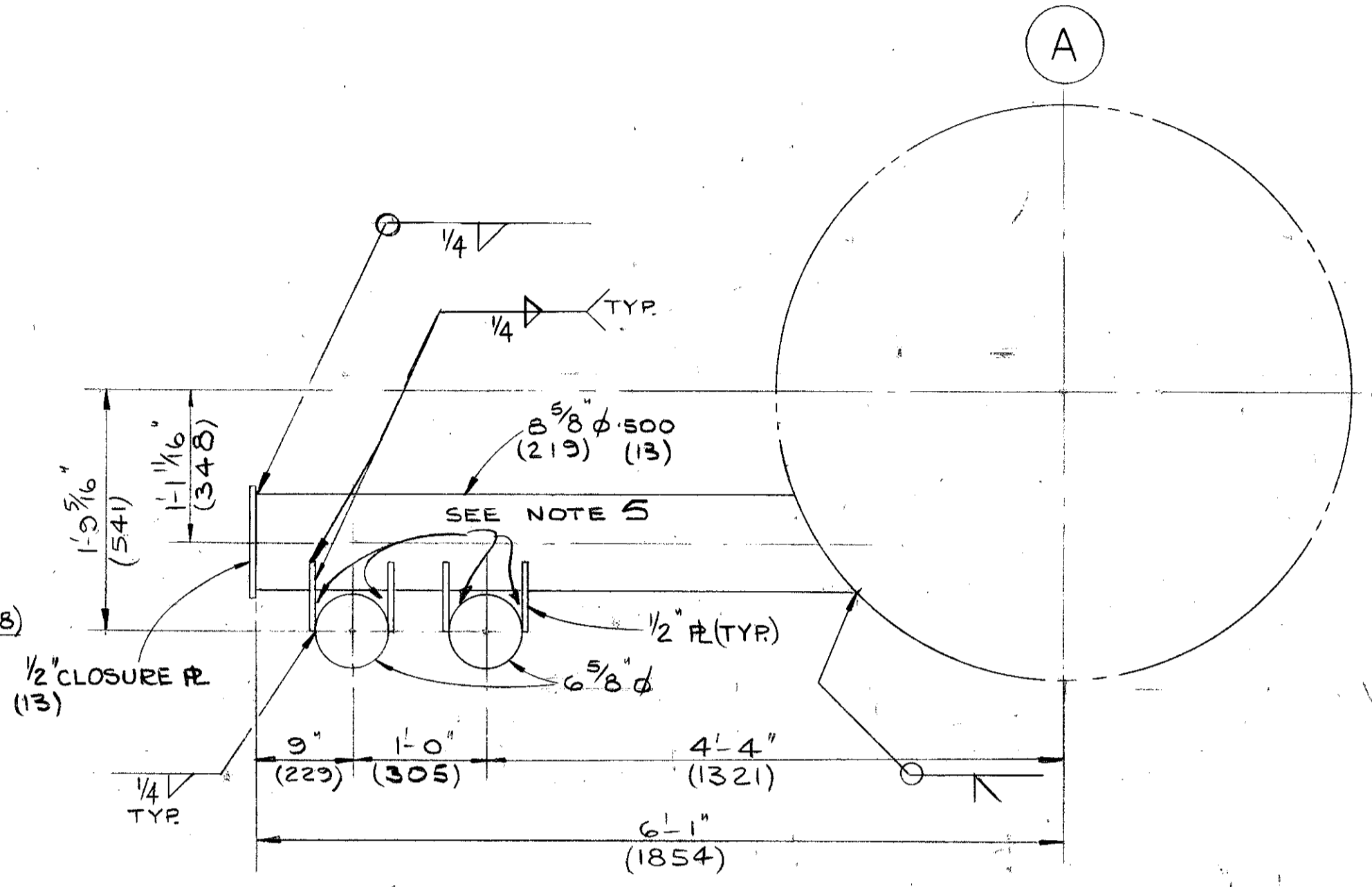
ELEVATION ON LEG A3 (SEE KEY PLAN)  
(SCALE 1/16" = 1'-0")



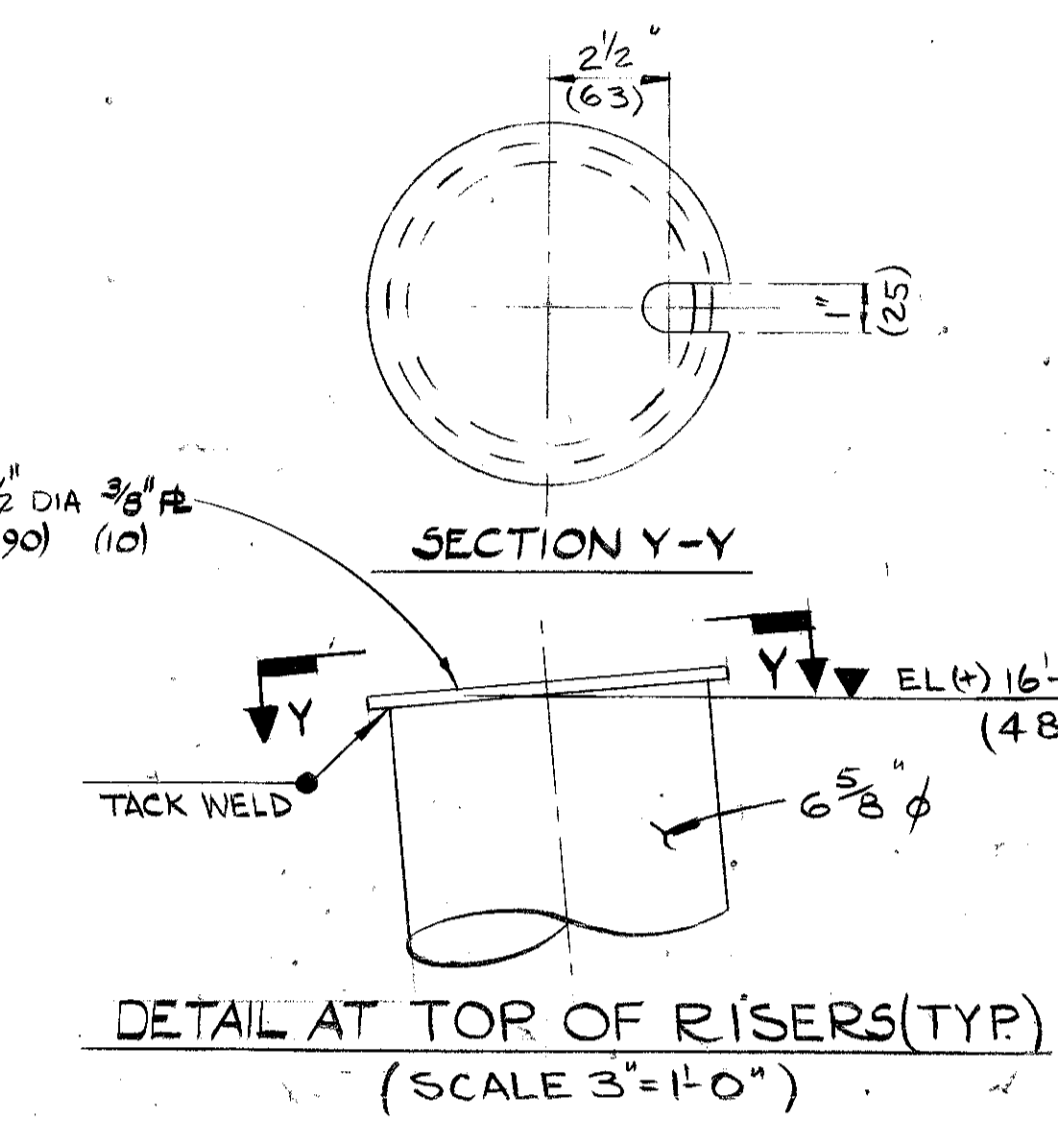
DETAIL 1 (SCALE 1" = 1'-0")  
TYP AT ELEVATIONS: (-) 21'-0"; (-) 300'-0"



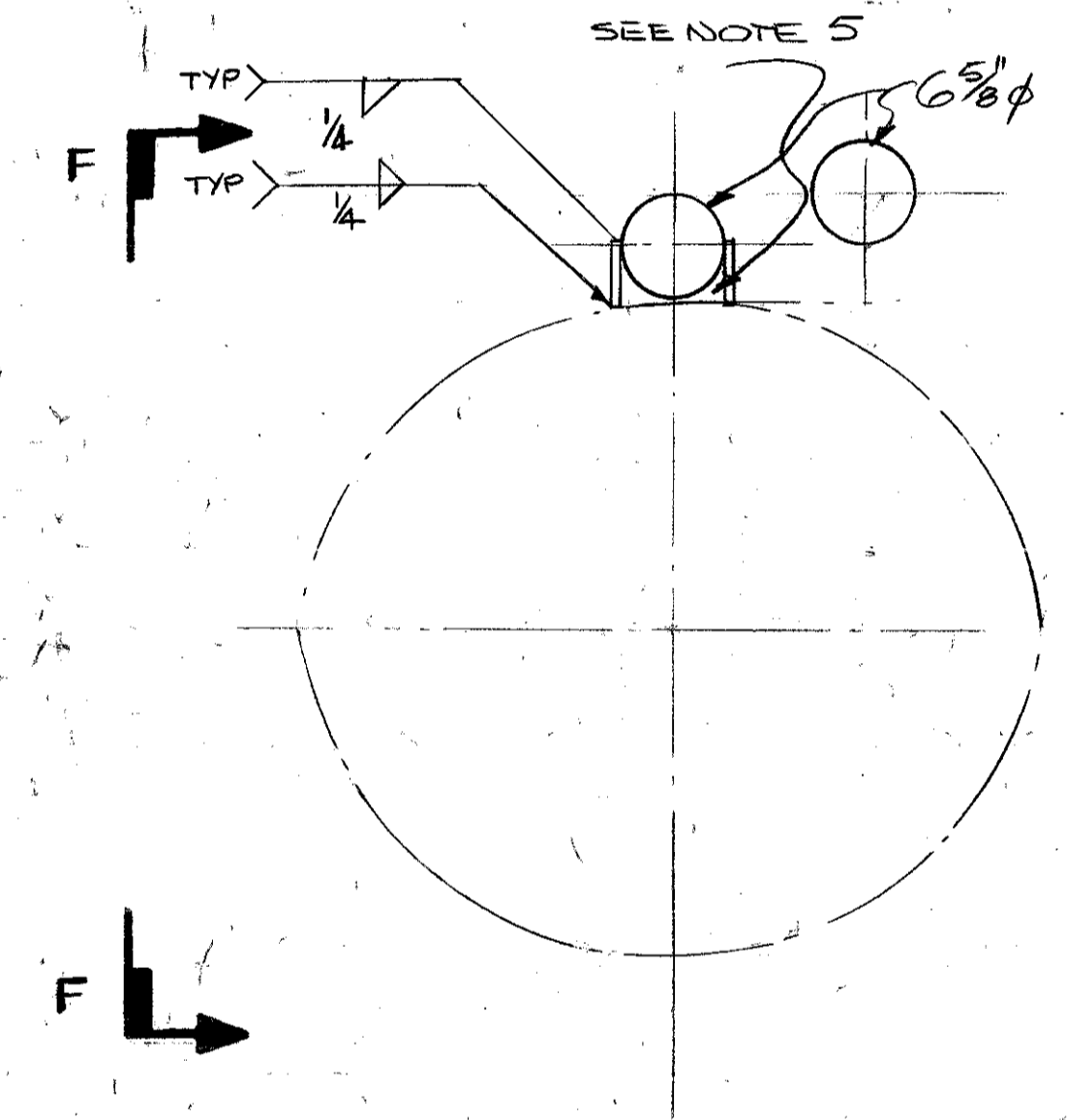
DETAIL 2 (SCALE 1" = 1'-0")  
TYP AT ELEVATIONS: (+) 15'-0"; (-) 38'-11"; (-) 96'-1 3/16"; (-) 128'-6 3/4"; (-) 165'-4 1/2"; (-) 199'-0 5/8"; (-) 235'-6 5/16"; (-) 275'-10 1/4"



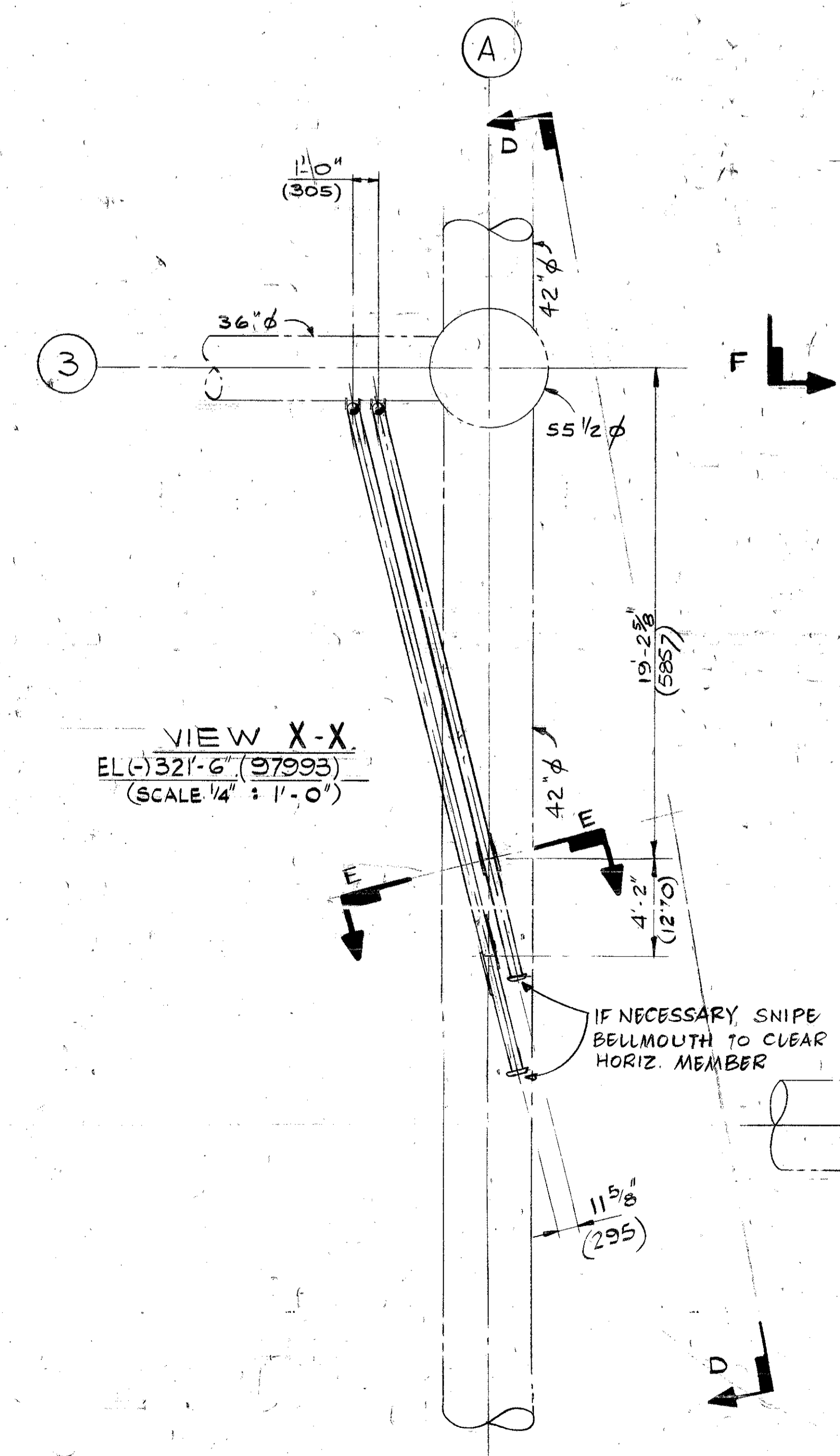
SECTION A-A (SCALE 1" = 1'-0")



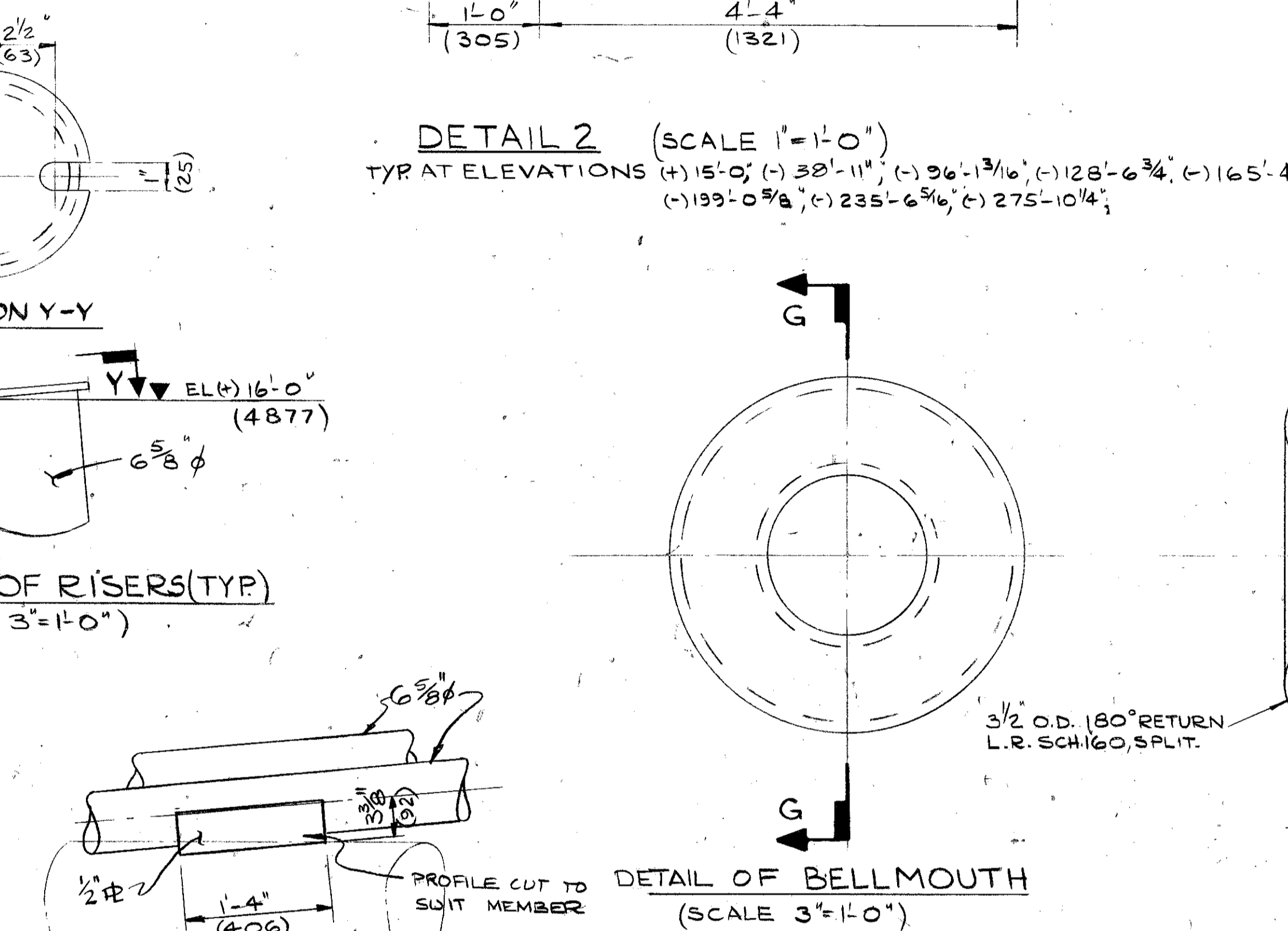
DETAIL AT TOP OF RISERS (TYP)  
(SCALE 3" = 1'-0")



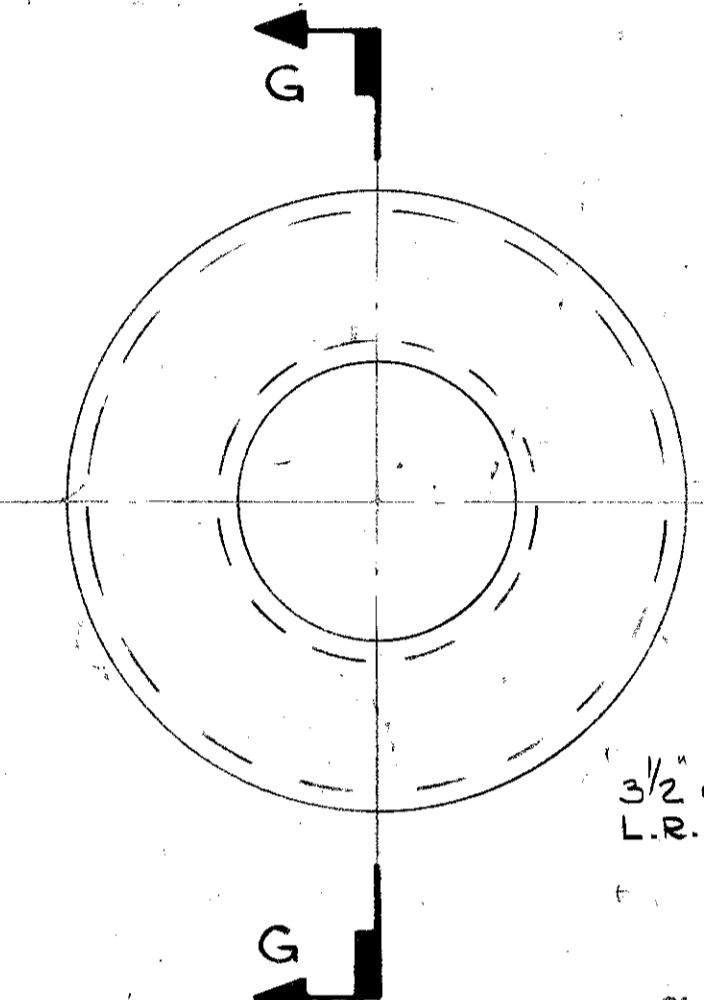
SECTION E-E



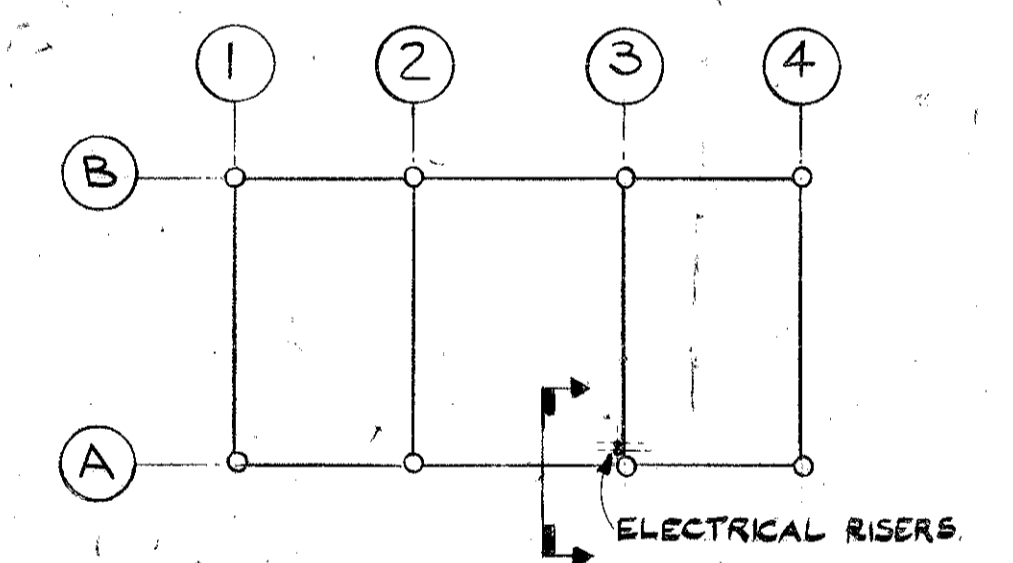
VIEW X-X  
EL(-) 321'-6" (97993)  
(SCALE 1/4" = 1'-0")



DETAIL OF BELLMOUTH  
(SCALE 3" = 1'-0")



SECTION G-G



KEY PLAN

- NOTES
- FABRICATOR - RUN 1/2" φ 6X19, IW.R.C. WIRE ROPE GALV. THROUGH EACH RISER & SECURE ALL ENDS AT EL (+) 15'-0" WITH CABLE CLAMPS. RETURN CABLE TO BE ON OUTBOARD FACE OF JACKET.
  - ERECTOR - AFTER INSTALLATION OF JACKET, POUR 5 GAL. "FLOAT COAT" RUST INHIBITOR INTO EACH RISER, & TACK WELD 3/8" COVER PLATE OVER TOP.
  - ALL PLATE AND PIPE TO BE NON-STRUCTURAL MILD STEEL.
  - CHILL (BACKUP) RINGS TO BE USED ON ALL BUTT WELDS ON 6 5/8" φ PIPE.
  - FILL VOIDS BETWEEN 6 5/8" φ PIPE & 1/2" PLATE WITH BUILDING MASTIC, (CAULKING COMPOUND)

self norge as  
dwg no: FF 931 210 055  
REV: 0 DATE: 02.10.74

25 JUL 1974  
APPROVED  
FOR CONSTRUCTION

DESIGN	STRUCT	PIPING	ELEC	MK	BY	DATE	REVISIONS	DATE	APP.	DESIGN	STRUCT	PIPING	ELEC	MK	BY	DATE	REVISIONS	DATE	APP.

ELF-NORGE A/S  
NORWAY

24 WELL SELF CONTAINED  
DRILLING PLATFORM No 1

NORTH SEA FRIGGS FIELD WD 98 M/

McDERMOTT - HUDSON  
LONDON - ENGLAND

APPROVED: [Signature]  
PL. DESIGNER: [Signature]  
DATE: 25 JUL 73  
ENGINEERS APPROVAL

DRAWN BY: [Signature]  
SCALE: AS NOTED  
DATE: 3 SEP 73  
DESIGNED BY: [Signature]  
DATE: 153

DWG. NO. ELN 02020  
SHEET NO. 153

6 5/8" ELECTRICAL RISERS. SHT 1 OF 2