

- NOTES**
- FOR DETAILS OF CABLE RACK SUPPORTS SEE DRG 2111-057
 - FINAL POSITIONS OF CABLE RACK SUPPORTS SHALL BE DETERMINED BY SITE CONDITIONS & BE AT THE DISCRETION OF THE ENGINEER
 - CABLE RACK SUPPORTS ON BEAMS INDICATED THIS * TO BE SPACED AT A MAX. OF 2M.
 - MAX. SPACING FOR ALL OTHER RACK SUPPORTS TO BE 5M.
 - CABLE RACK ELEVATIONS ARE TO UNDERSIDE OF CABLE RACK
 - ALL CABLE RACK TO BE INSTALLED OFF-SHORE UNLESS OTHERWISE SHOWN.
 - CHANGES IN RACK ELEVATION ARE TO BE ACHIEVED BY INSIDE & OUTSIDE VERTICAL RISERS UNLESS OTHERWISE SHOWN.

REFERENCE DRAWINGS

DRG. NO.	TITLE
E.C.N. 2111-057	MOUNTING DETAILS - CABLE RACK
E.C.N. 2111-058	LIGHTING & CABLE RACK LAYOUT - HELIDECK
E.C.N. 2111-059	SERVICE DUCT LAYOUT - CABLE RACK
E.C.N. 2111-060	CABLE RACK LAYOUT - MICROWAVE TOWER
E.C.N. 2111-061	POWER INSTALLATION DETAILS FOR CABLING TO STATIC INVERTER SYSTEM (SHAR & BATTERY ROOM)

REVISIONS

NO.	DATE	DESCRIPTION
1	1997.11.15	ISSUED FOR CONSTRUCTION
2	1998.01.17	ISSUED AS BUILT
3	1998.01.17	ISSUED AS BUILT
4	1998.01.17	ISSUED AS BUILT
5	1998.01.17	ISSUED AS BUILT
6	1998.01.17	ISSUED AS BUILT
7	1998.01.17	ISSUED AS BUILT
8	1998.01.17	ISSUED AS BUILT
9	1998.01.17	ISSUED AS BUILT
10	1998.01.17	ISSUED AS BUILT
11	1998.01.17	ISSUED AS BUILT
12	1998.01.17	ISSUED AS BUILT
13	1998.01.17	ISSUED AS BUILT
14	1998.01.17	ISSUED AS BUILT
15	1998.01.17	ISSUED AS BUILT
16	1998.01.17	ISSUED AS BUILT

FRIGO FIELD: FF 96.23.17.0052

QUARTERS PLATFORM
ELF - NORGE
FRIGG FIELD

McDERMOTT - HUDSON

DATE: 1997.11.15
SCALE: 1:50

PROJECT: ELF - NORGE
JOB NO.: 96-0-032

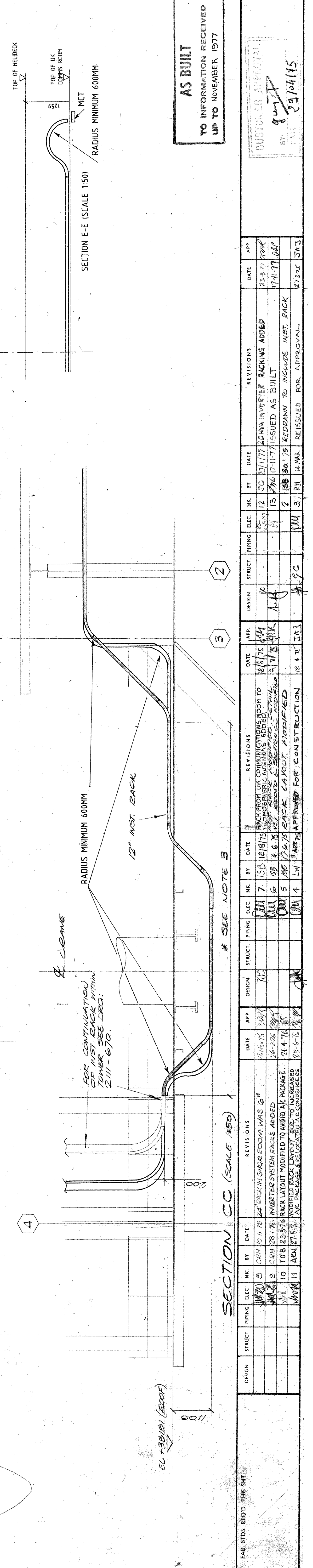
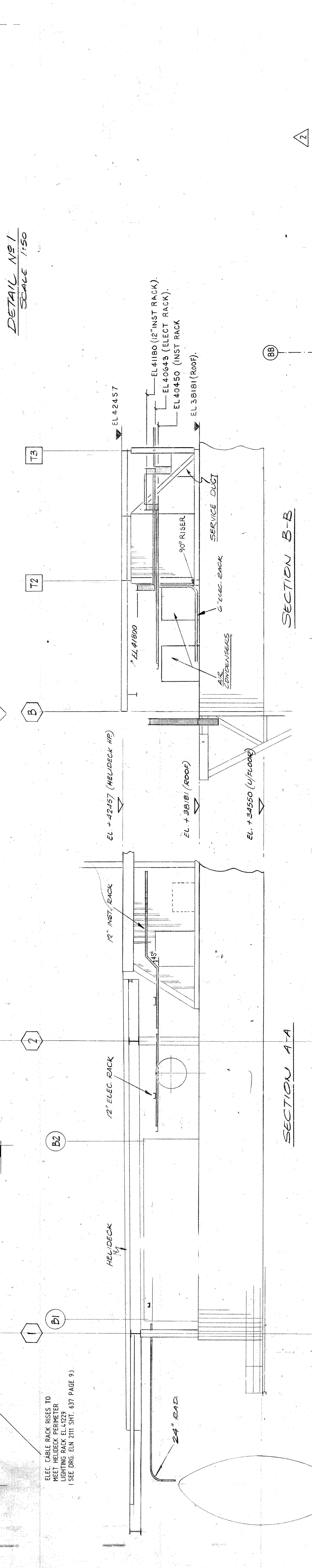
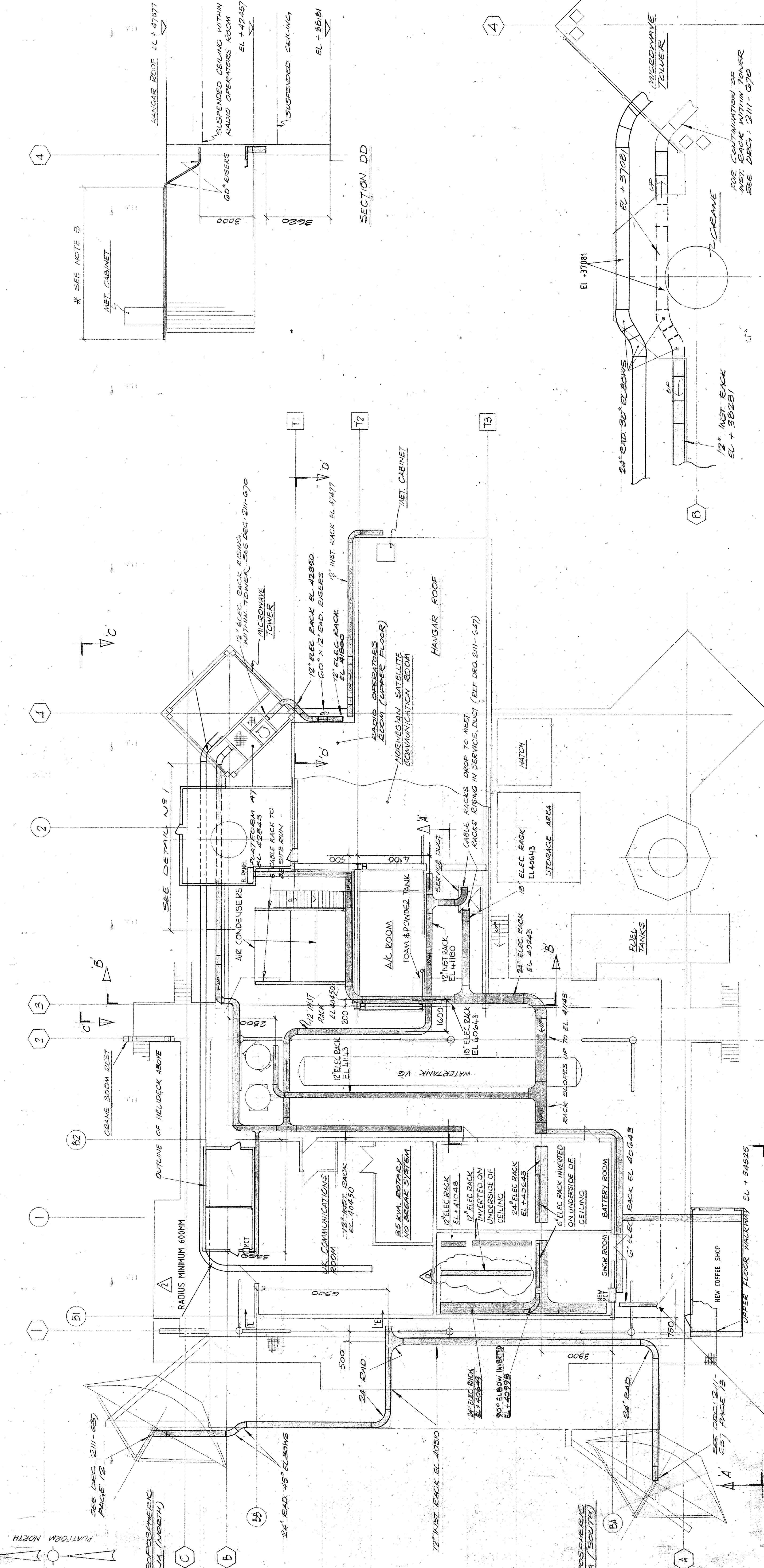
LOCATION: LONDON - ENGLAND

DESIGNED BY: J. S. B. JENSEN
CHECKED BY: J. S. B. JENSEN
DATE: 1997.11.15

SCALE: 1:50

DATE: 1997.11.15

SCALE: 1:50



AS BUILT
TO INFORMATION RECEIVED
UP TO NOVEMBER 1977

SECTION CC (SCALE ASB)

NO.	DATE	DESCRIPTION
1	1997.11.15	ISSUED FOR CONSTRUCTION
2	1998.01.17	ISSUED AS BUILT
3	1998.01.17	ISSUED AS BUILT
4	1998.01.17	ISSUED AS BUILT
5	1998.01.17	ISSUED AS BUILT
6	1998.01.17	ISSUED AS BUILT
7	1998.01.17	ISSUED AS BUILT
8	1998.01.17	ISSUED AS BUILT
9	1998.01.17	ISSUED AS BUILT
10	1998.01.17	ISSUED AS BUILT
11	1998.01.17	ISSUED AS BUILT
12	1998.01.17	ISSUED AS BUILT
13	1998.01.17	ISSUED AS BUILT
14	1998.01.17	ISSUED AS BUILT
15	1998.01.17	ISSUED AS BUILT
16	1998.01.17	ISSUED AS BUILT

REVISIONS

NO.	DATE	DESCRIPTION
1	1997.11.15	ISSUED FOR CONSTRUCTION
2	1998.01.17	ISSUED AS BUILT
3	1998.01.17	ISSUED AS BUILT
4	1998.01.17	ISSUED AS BUILT
5	1998.01.17	ISSUED AS BUILT
6	1998.01.17	ISSUED AS BUILT
7	1998.01.17	ISSUED AS BUILT
8	1998.01.17	ISSUED AS BUILT
9	1998.01.17	ISSUED AS BUILT
10	1998.01.17	ISSUED AS BUILT
11	1998.01.17	ISSUED AS BUILT
12	1998.01.17	ISSUED AS BUILT
13	1998.01.17	ISSUED AS BUILT
14	1998.01.17	ISSUED AS BUILT
15	1998.01.17	ISSUED AS BUILT
16	1998.01.17	ISSUED AS BUILT