

NOTES:-
 1. FOR DETAILS OF CABLE RACK SUPPORTS SEE DGC: ELN 2111-G57
 2. FINAL POSITIONS OF CABLE RACK SUPPORTS SHALL BE DETERMINED BY THE ENGINEER IN CONSULTATION WITH THE DISCRETION OF THE ENGINEER
 3. MAX. SPACING FOR RACK SUPPORTS TO BE 3 M.
 4. CABLE RACK ELEVATIONS ARE TO UNDERSIDE OF RACK
 5. CHANGES IN RACK ELEVATION ARE TO BE ACHIEVED BY CHANGING INSIDE & OUTSIDE VERTICAL RISERS
 6. INTERNAL WALL PENETRATIONS FOR CABLE RACK & BUS BAR TRUNKING HAVE BEEN SHOWN IN SECTION CC FOR DETAILS SEE DGC: ELN 2111-SHT G45

REFERENCE DRAWINGS

DWG. NO./SHT. NO.	TITLE
ELN 2111 G18	CABLE RACK LAYOUT - BRIDGE
G57	INSTALLATION DETAILS - CABLE RACK
G58	MOUNTING DETAILS - DIST. BOARDS
G59	PENETRATION DETAILS
G60	OP TO BRIDGE CABLE RACK LAYOUT
G61	ALTERNATOR TERMINAL BOX WITH CTS
G62	ARMORED CABLE TO ALTERNATOR CABLE

ELF - NORGE FRIGG FIELD

QUARTERS PLAT FORM JCB 1-40-D2

McDERMOTT - HU DSON

LONDON - ENGLAND

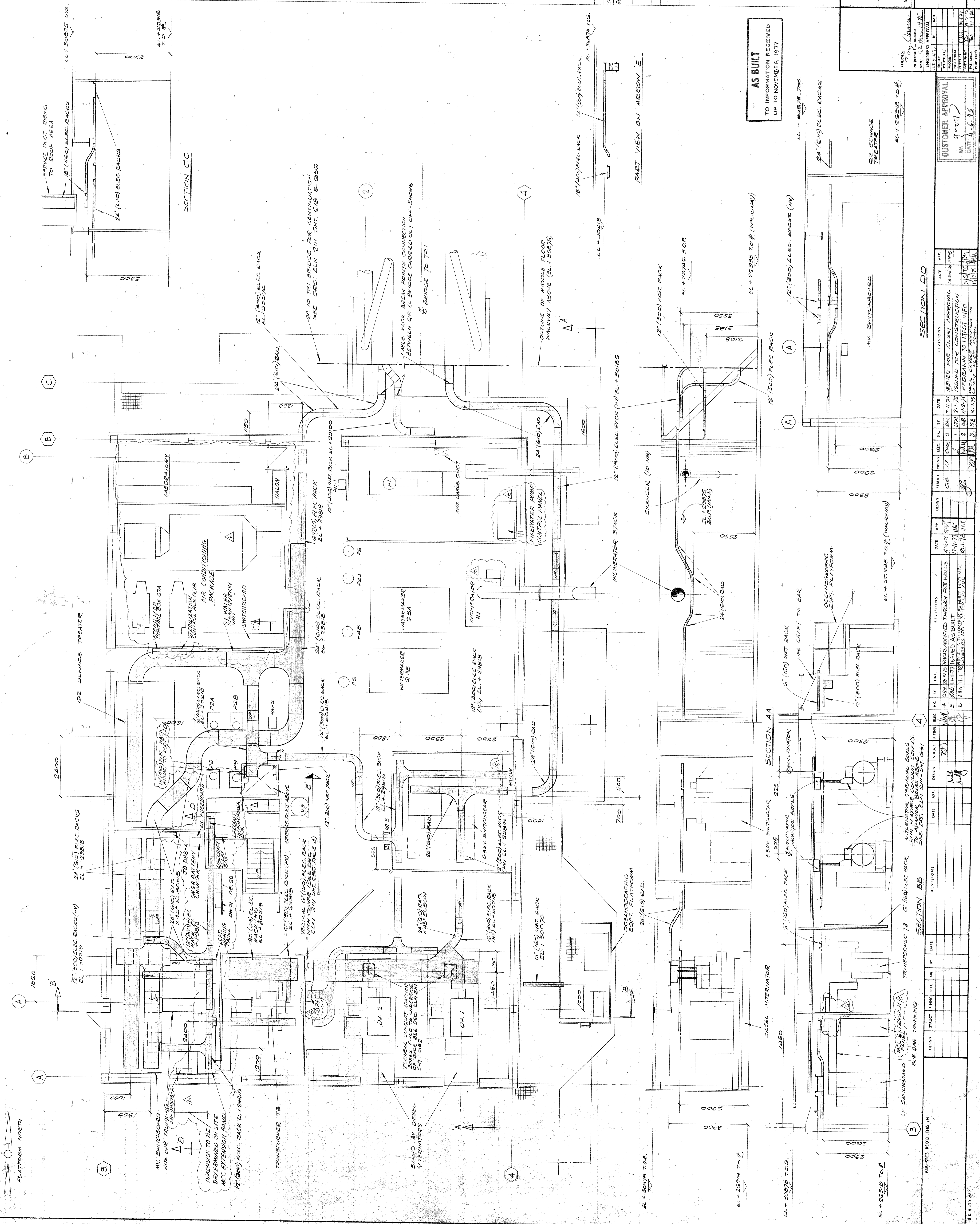
DRWN BY: 1/50
 DESIGNED BY: 1/50
 CHECKED BY: 1/50
 DATE: 1.6.75

W.D.104M

AS BUILT TO INFORMATION RECEIVED UP TO NOVEMBER 1977

CUSTOMER APPROVAL

DATE: 1.6.75



REVISIONS

NO.	DATE	BY	REVISIONS
1	17/11/74	W. H. W.	ISSUED FOR CONSTRUCTION
2	18/12/74	W. H. W.	ISSUED FOR CONSTRUCTION
3	18/12/74	W. H. W.	ISSUED FOR CONSTRUCTION
4	18/12/74	W. H. W.	ISSUED FOR CONSTRUCTION

DESIGN: W. H. W. DATE: 17/11/74
 CHECKED: W. H. W. DATE: 17/11/74
 APPROVED: W. H. W. DATE: 17/11/74