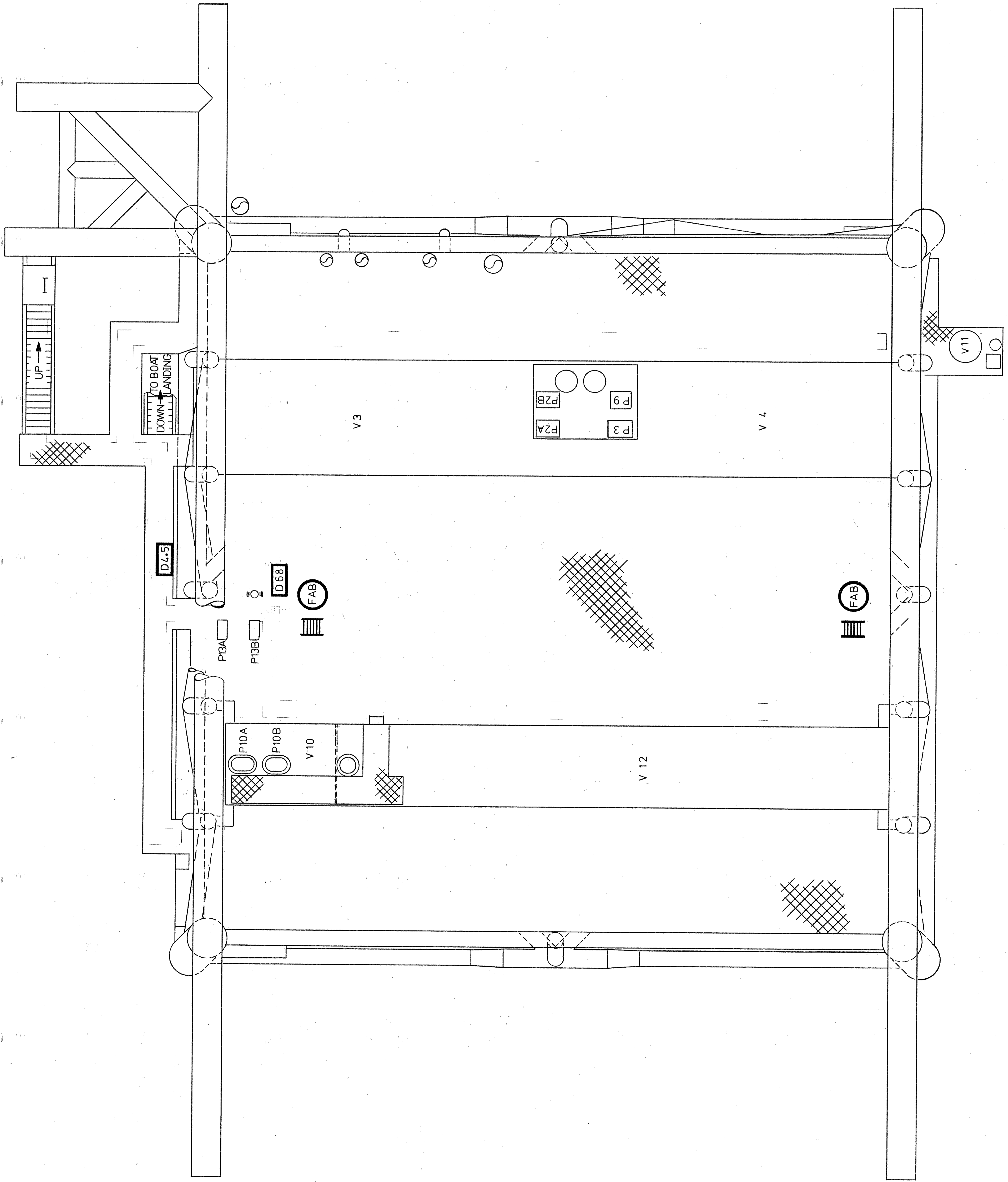
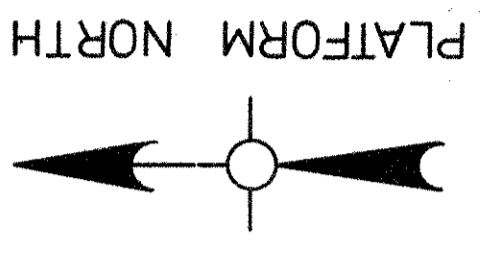


LEGEND

- [H1-4] 1-4 Kg. HALON FIRE EXTINGUISHER
- [W9] 9 Kg. WATER FIRE EXTINGUISHER
- [D4-5] 4-5 Kg. DRY CHEMICAL FIRE EXTINGUISHER
- [D9] 9 Kg. DRY CHEMICAL FIRE EXTINGUISHER
- [D68] 68 Kg. DRY CHEMICAL FIRE EXTINGUISHER
- [C4-5] 4-5 Kg. FIRE EXTINGUISHER CO2
- [C9] 9 Kg. FIRE EXTINGUISHER CO2
- [C13-6] 13-6 Kg. FIRE EXTINGUISHER CO2
- [M] FIRE WATER MONITOR
- [H] WASHDOWN HOSE REEL
- [F] FIRE WATER HOSE REEL
- [F] WATER/FOAM HOSE REEL
- [C] DRY CHEMICAL HOSE REEL
- [B] BREAK GLASS UNIT - HALON MANUAL RELEASE
- [WFR] MANUAL START STATION - WATER DELUGE (VESSEL NUMBER IN BRACKETS)
- [PR] WATER/FOAM RELEASE LEVER FOR FIRE PUMP START
- [ESD] POWER RELEASE LEVER
- [ESD] ESD BUTTON
- [FAB] FIRE ALARM BUTTON (ALARM & FIRE PUMP START)
- [FB] FIRE BLANKET
- [F] FIREMANS OUTFIT
- [BA] BREATHING APPARATUS
- [M] MUSTER ALARM
- [] EQUIPMENT COVERED WITH WATER DELUGE
- [] COMPARTMENTS COVERED WITH HALON
- [] ESCAPE ROUTES



AS BUILT
TO INFORMATION RECEIVED
UP TO DEC 07

ELF - NORGE
FRIGG FIELD

QUARTERS PLATFORM
JOB 1-40-D2

McDERMOTT - HUDSON
LONDON - ENGLAND

NORTH SEA

APPROVED BY: [Signature]
PROJECT: [Blank]
SCALE: 1:50
DRAWN BY: C. PEARSON
DATE: MAY 77
DESIGNED BY: [Blank]
CHECKED BY: [Blank]
DATE: [Blank]
SHEET NO. 7028
FIRE CONTROL PLAN - DECK SUPPORT LEVEL

REV.	DATE	BY	REVISIONS
1	10/11/77	D. CP	EXPANSION TO DECK AND SAFETY DEGS.
2	11/11/77	D. CP	NEW DRAWING

FAB. STDS. REQ'D. THIS SHIT.