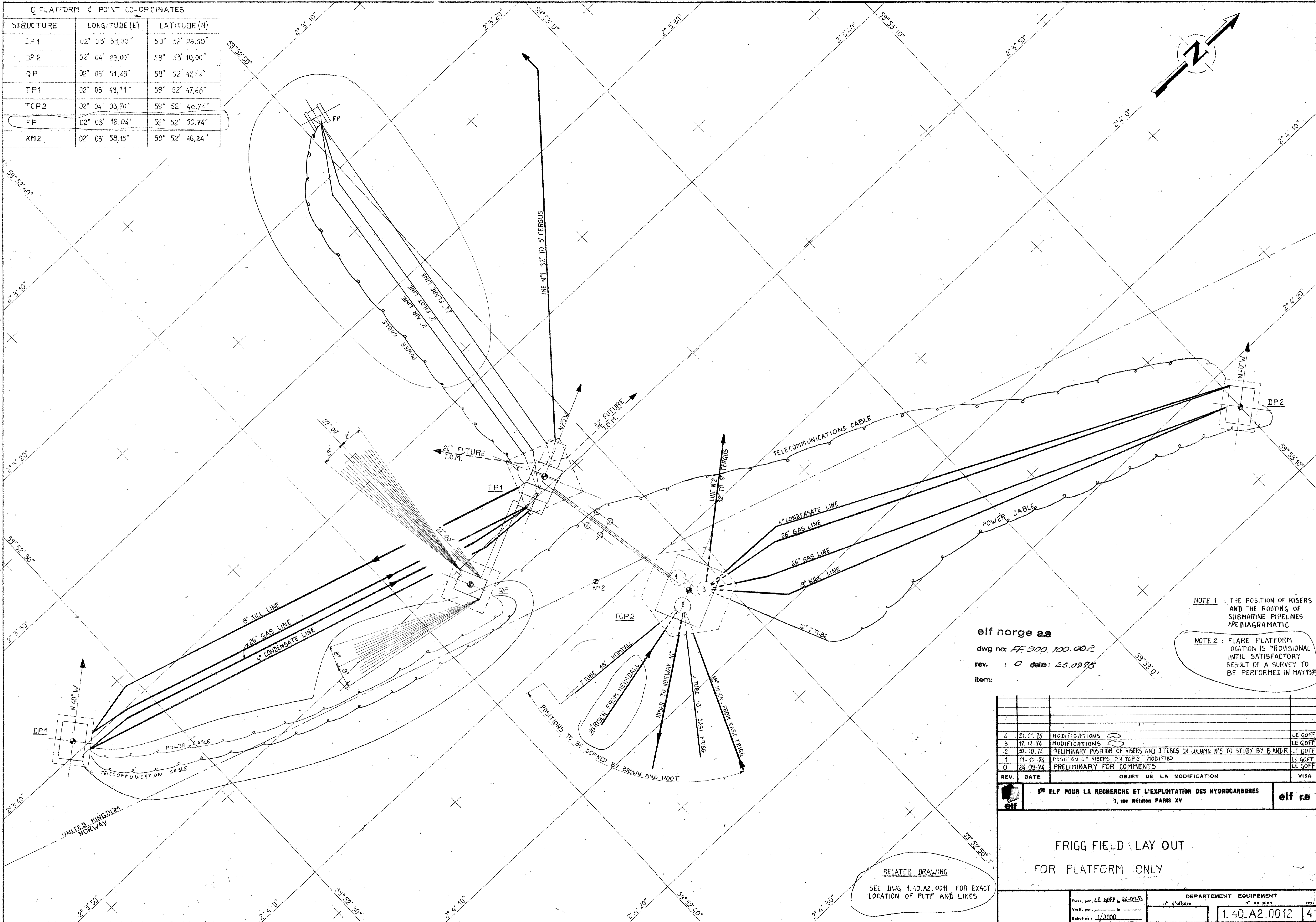


□ PLATFORM & POINT CO-ORDINATES

STRUCTURE	LONGITUDE (E)	LATITUDE (N)
DP1	02° 03' 39,00"	59° 52' 26,50"
DP2	02° 04' 23,00"	59° 53' 10,00"
QP	02° 03' 51,49"	59° 52' 42,52"
TP1	02° 03' 49,11"	59° 52' 47,66"
TCP2	02° 04' 03,70"	59° 52' 48,74"
FP	02° 03' 16,04"	59° 52' 50,74"
KM2	02° 03' 58,15"	59° 52' 46,24"



NOTE 1 : THE POSITION OF RISERS AND THE ROUTING OF SUBMARINE PIPELINES ARE DIAGRAMATIC

NOTE 2 : FLARE PLATFORM LOCATION IS PROVISIONAL UNTIL SATISFACTORY RESULT OF A SURVEY TO BE PERFORMED IN MAY 1975

elf norge as
 dwg no: FF 900.100.002
 rev. : 0 date: 25.09.75
 item:

REV.	DATE	OBJET DE LA MODIFICATION	VISA
4	21.01.75	MODIFICATIONS	LE GOFF
3	17.12.74	MODIFICATIONS	LE GOFF
2	30.10.74	PRELIMINARY POSITION OF RISERS AND J TUBES ON COLUMN N°S TO STUDY BY BANDR	LE GOFF
1	11.10.74	POSITION OF RISERS ON TCP2 MODIFIED	LE GOFF
0	24.09.74	PRELIMINARY FOR COMMENTS	LE GOFF

elf **S^e ELF POUR LA RECHERCHE ET L'EXPLOITATION DES HYDROCARBURES** 7, rue Nélaton PARIS XV **elf re**

FRIGG FIELD LAY OUT
 FOR PLATFORM ONLY

RELATED DRAWING
 SEE DWG 1.40.A2.0011 FOR EXACT LOCATION OF PLTF AND LINES

Des. par: LE GOFF le 24-09-75	DEPARTEMENT EQUIPEMENT	n° du plan	rev.
Vérif. par:	n° d'affaire	1.40.A2.0012	4
Echelles: 1/2000			