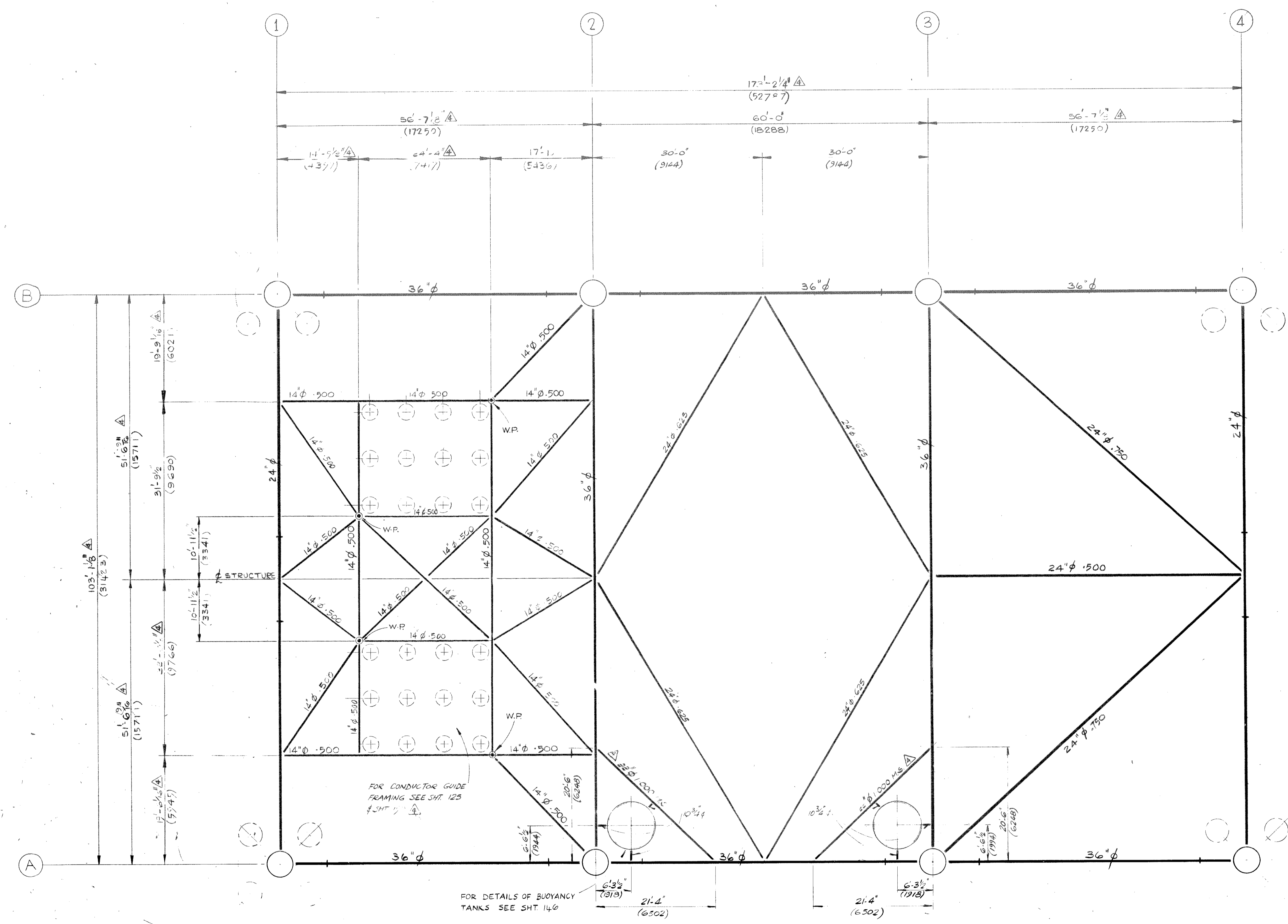
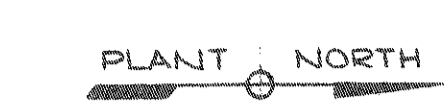


elf norge as
 dwg no: FF 93/210.024
 rev: 10 date: 09.10.74
 Bem:

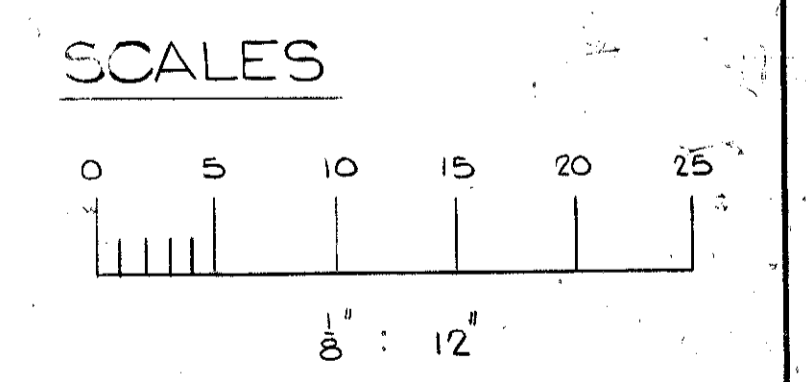
- NOTES**
1. DIMENSIONS SHOWN IN BRACKETS ARE METRIC EQUIVALENTS IN MILLIMETRES
 2. ALL MATERIAL TO BE HIGH STRENGTH STEEL EXCEPT 14" DIA. CONDUCTOR GUIDE FRAMING WHICH IS TO BE MILD STEEL (EXCEPT THIN)



HORIZONTAL FRAMING EL (-) 96'-1 3/8" (φ OF PIPES)
 (23221)

REF DWGS NOS

McD-H DWGS	
CONDUCTOR GUIDE FRAMING	ELN 02020 SHT. 145
BUOYANCY TANKS	ELN 02020 SHT. 146
CONDUCTOR GUIDE FRAMING AT 41" φ GUIDE	ELN 02020 SHT. 150



elf norge as
 dwg no: FF 93/210.024
 rev: 10 date: 09.10.74
 Bem:

ELF-NORGE A/S NORWAY	
24 WELL SELF CONTAINED DRILLING PLATFORM No 1	
NORTH SEA	FRIGG FIELD
WD 98 M	
McDERMOTT - HUDSON	
LONDON - ENGLAND	
APPROVED: <i>[Signature]</i>	DATE: 26 FEB 75
DESIGNED BY: P. CASSEY	DRAWN BY: P. MAWER
CHECKED BY: P. MAWER	DATE: 26 FEB 75
PROJECT: DRILLING PLATFORM No 1	DWG. NO: ELN 02020
SHEET NO: 121	
HORIZONTAL FRAMING EL (-) 96'-1 3/8" (23221)	

DESIGN	STRUCT	PIPING	ELEC	ME	BY	DATE	REVISIONS	DATE	APP	DESIGN	STRUCT	PIPING	ELEC	ME	BY	DATE	REVISIONS	DATE	APP