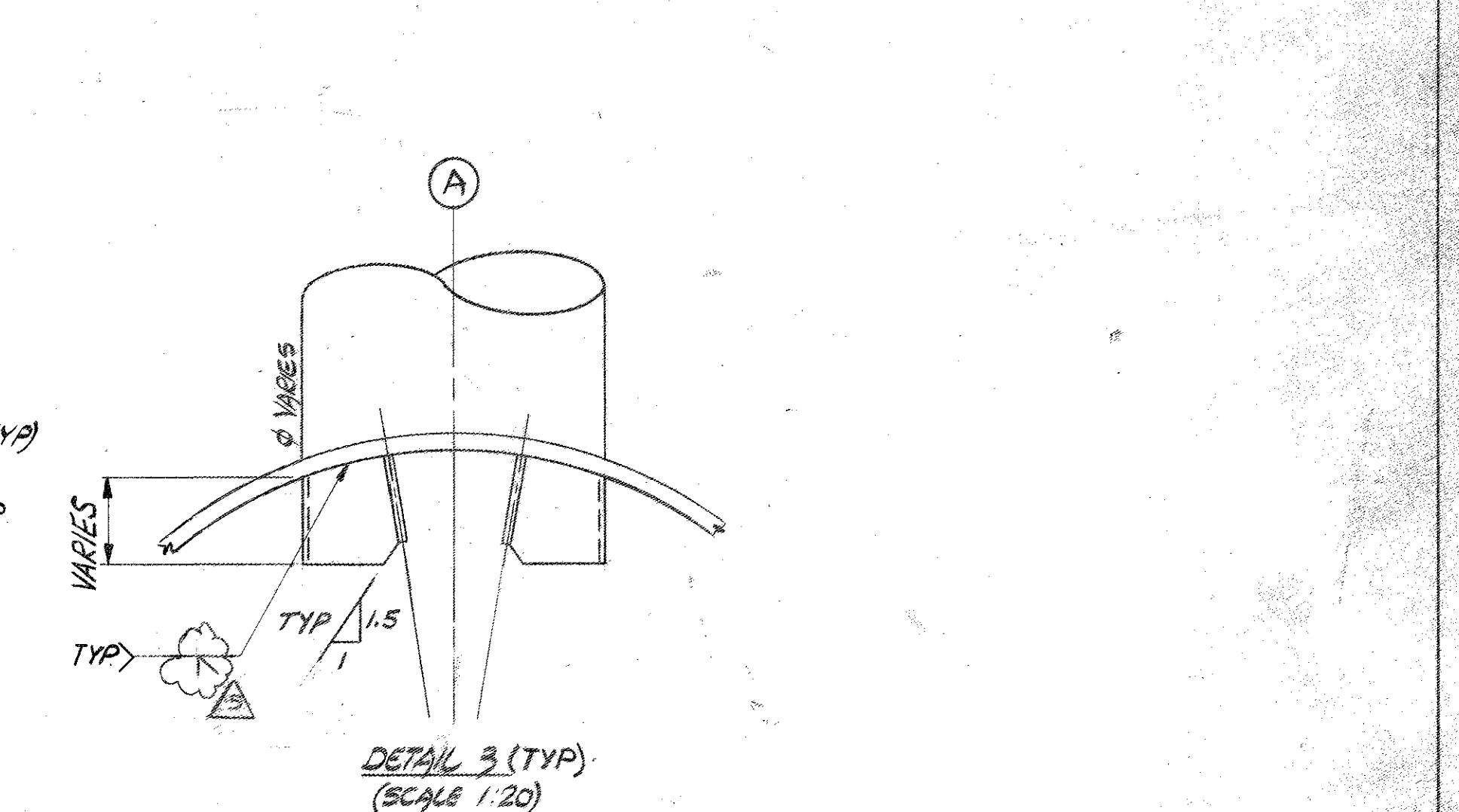
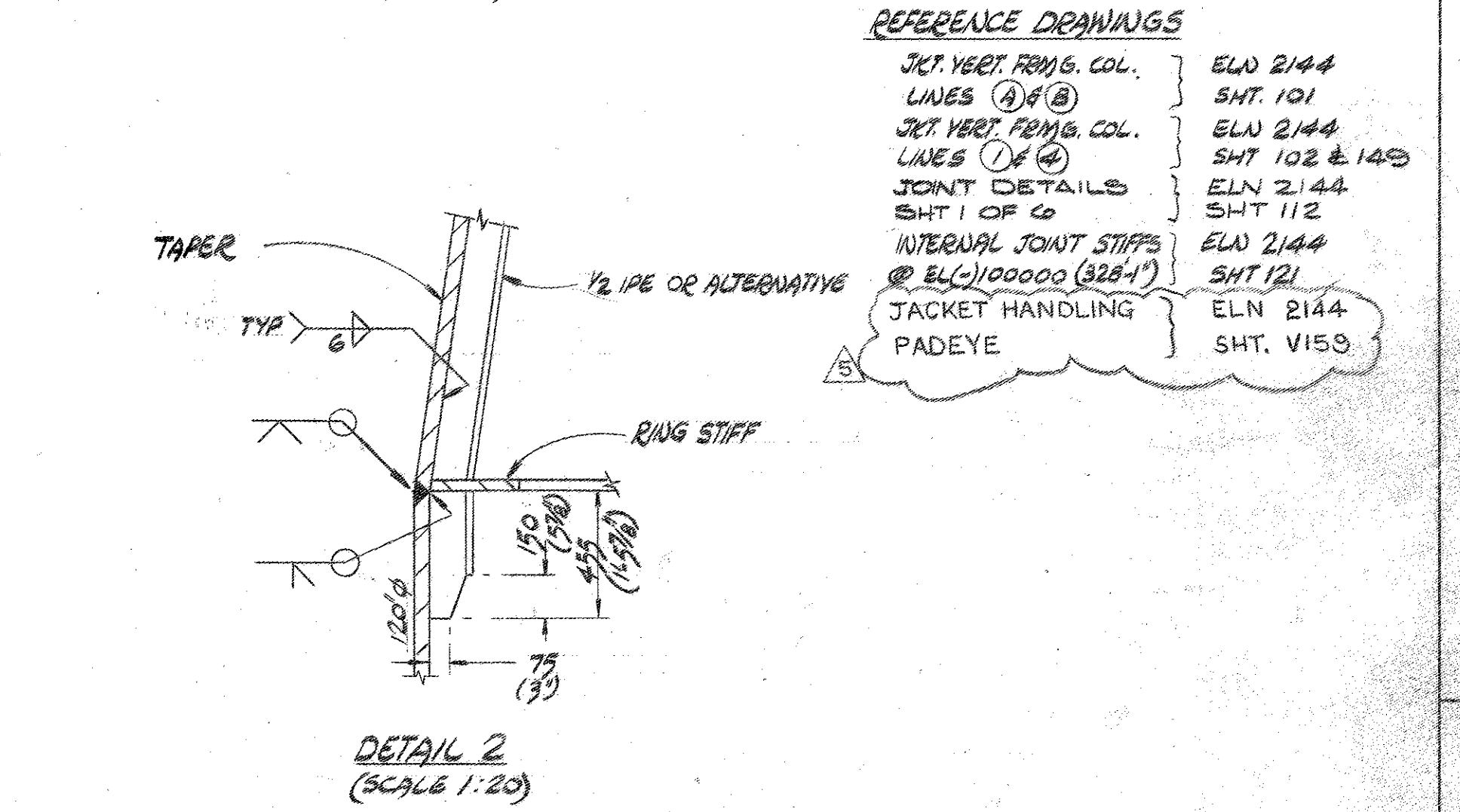
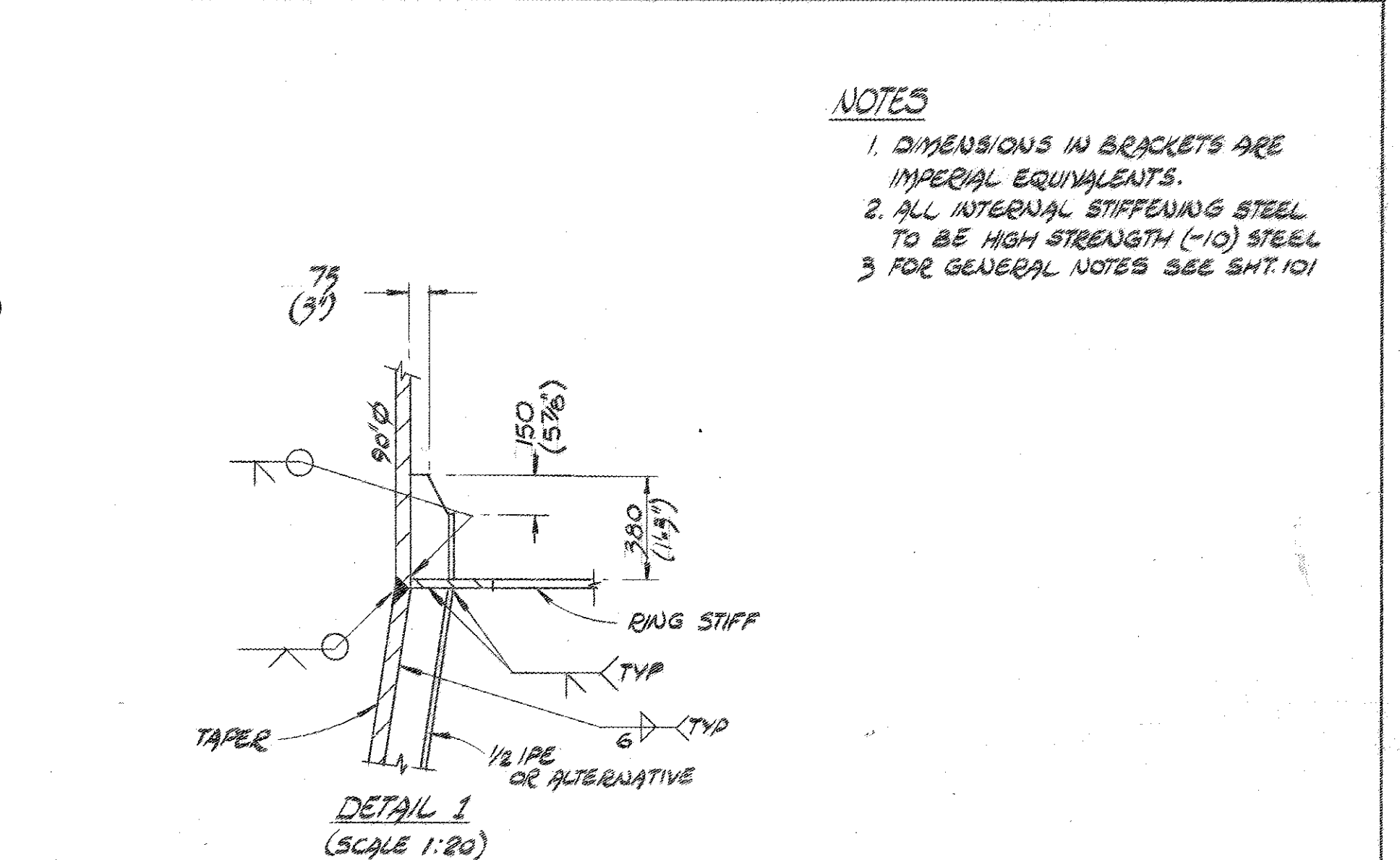
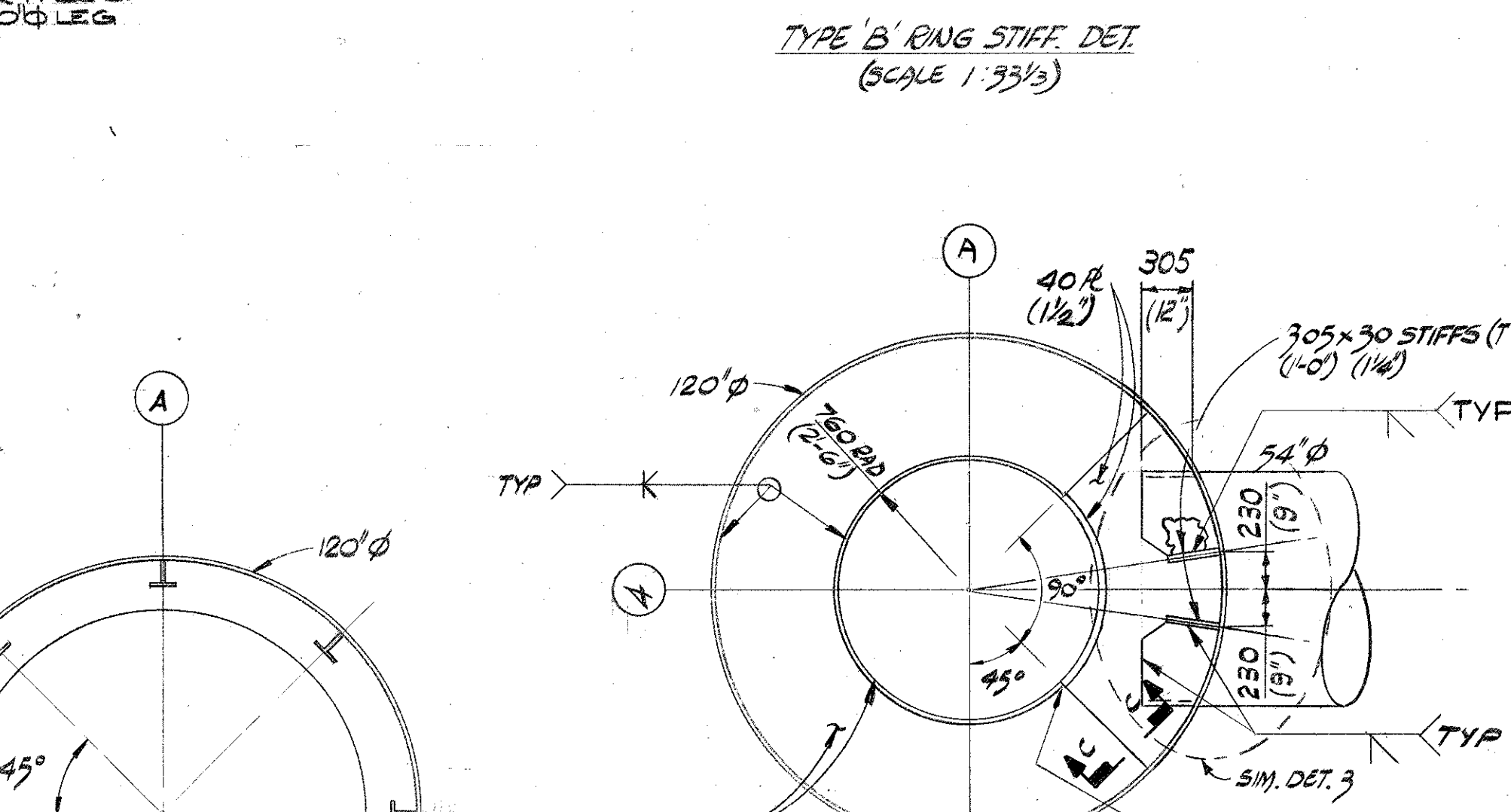
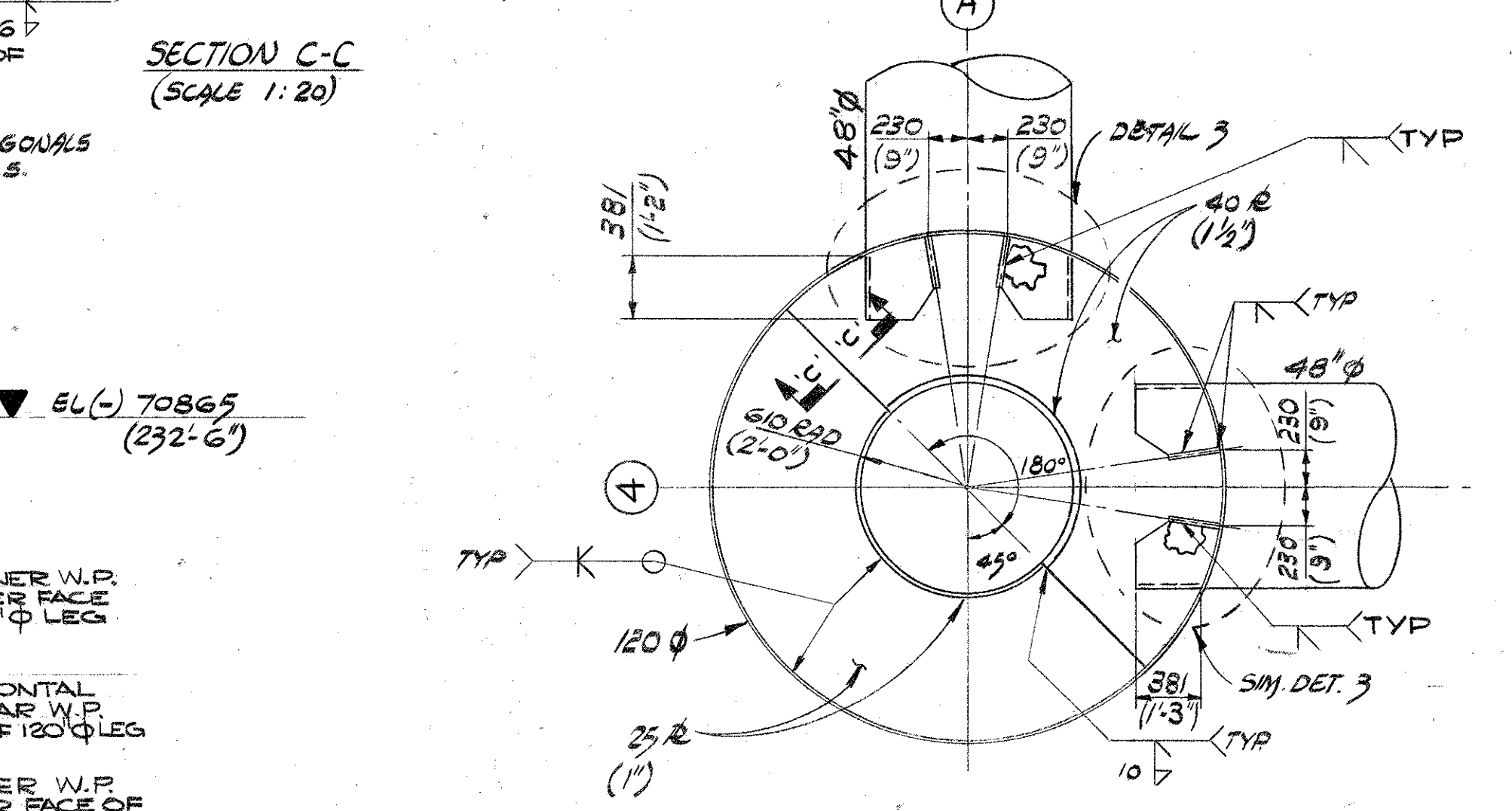
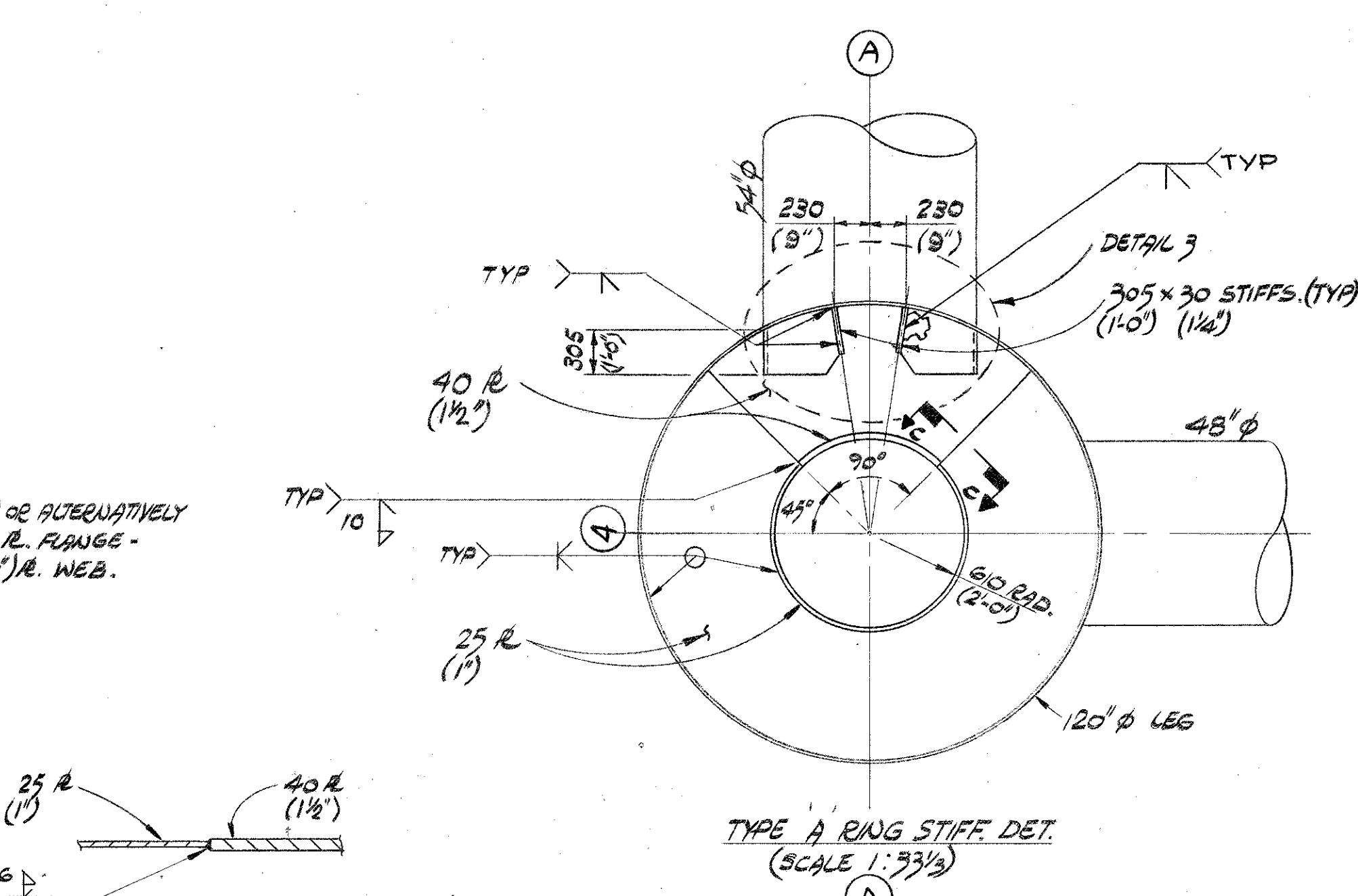


DESIGN	ELEC.	INSTR.	PIPING	STRUCT.	NO.	BY	DATE	REVISIONS	DATE	APP.	DESIGN	ELEC.	INSTR.	PIPING	STRUCT.	NO.	BY	DATE	REVISIONS	DATE	APP.



- NOTES**
1. DIMENSIONS IN BRACKETS ARE IMPERIAL EQUIVALENTS.
  2. ALL INTERNAL STIFFENING STEEL TO BE HIGH STRENGTH (L-10) STEEL
  3. FOR GENERAL NOTES SEE SHT. 101

- REFERENCE DRAWINGS**
- JKT. VERT. FRMG. COL. LINES (A) & (B) SHT. 101
  - JKT. VERT. FRMG. COL. LINES (1) & (2) SHT. 102 & 149
  - JOINT DETAILS SHT. 1 OF 6 SHT. 112
  - INTERNAL JOINT STIFFS @ EL(-) 70865 (232'-6") ELN 2144 SHT. 121
  - JACKET HANDLING PADEYE ELN 2144 SHT. V159

**ELF-NORGE A/S  
 NORWAY**

**DRILLING PLATFORM NO.2**

NORTH SEA      FRIGG FIELD      W.D. 100 M

**McDERMOTT - HUDSON**  
 LONDON - ENGLAND

APPROVED: *[Signature]*  
 MC DERMOTT - HUDSON  
 DATE: 15 JUN 74  
 ENGINEERS' APPROVAL

PROJ. NO.	SCALE	DATE	DWG. NO.
TRANS. NO.	AS NOTED	5 JUN 74	ELN 2144
PROCESS			
MECHANICAL			
ELECTRICAL			
INSTRUMENT			
FAB. CHECK	MPR 16-7-74		120
TRD. CHECK			

DRAWN BY: A. PEEBING  
 DESIGNED BY: *[Signature]*  
 INTERNAL JOINT STIFFENING AT EL(-) 70865 (232'-6")