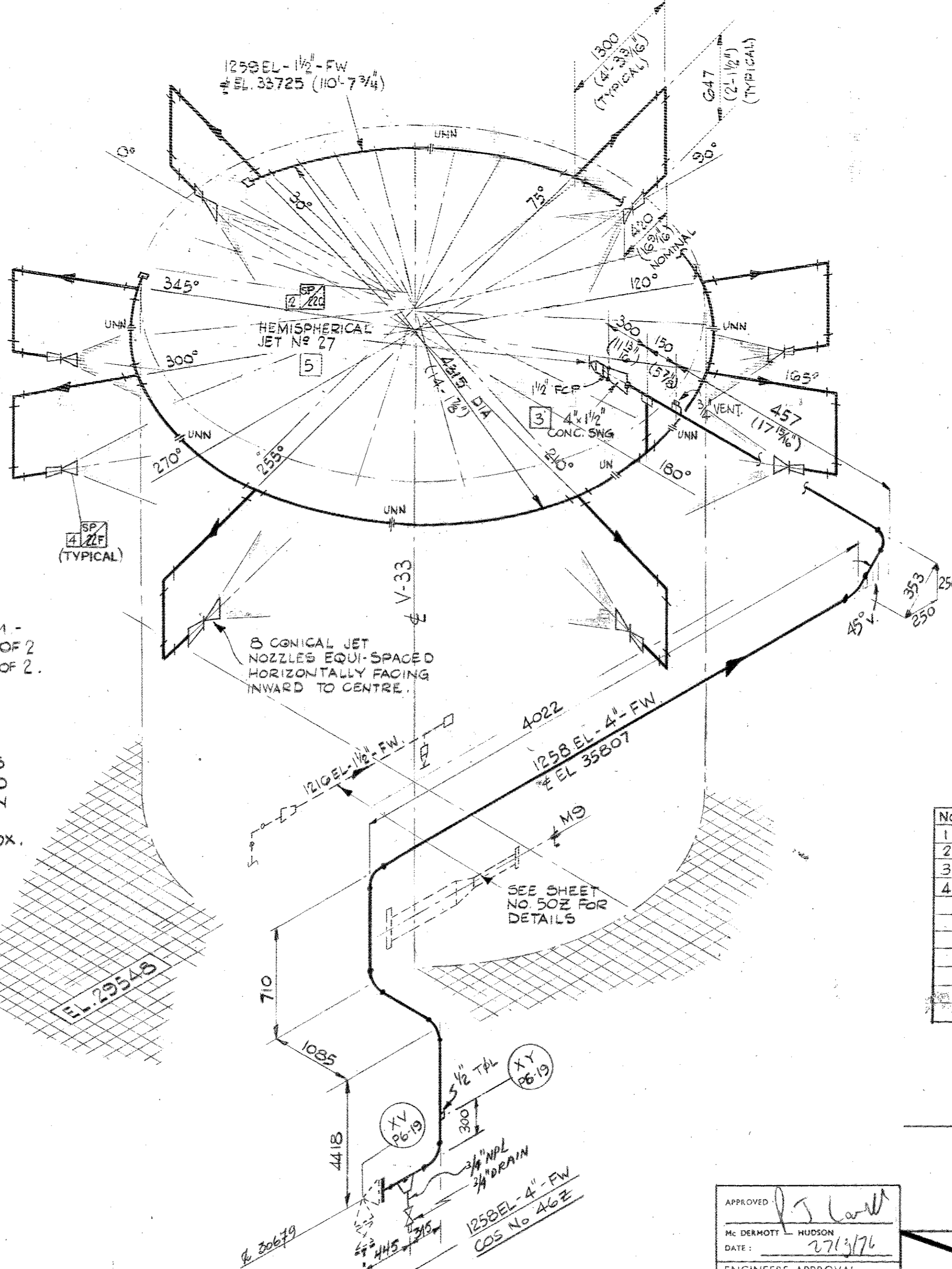


ISOMETRIC OF SPRAY NOZZLES AT V-3



REFERENCE DRAWINGS:  
UTILITY FLOW SHEET - FIREWATER SYSTEM -  
ELN-2110 A4IG SHT. 1 OF 2  
& ELN-2110 A4IG SHT. 2 OF 2.  
PIPING ARRANGEMENT PLAN - FIREWATER  
ZONE 01 AREA LOWER WEST-565

- NOTES:
1. PIPING ADJACENT TO SPRAY NOZZLES TO BE SUITABLY BRACED & SUPPORTED TO WITHSTAND REACTION OF JET WHEN OPERATING.
  2. DIMENSIONS & ELEVATIONS ARE APPROX. & SHOULD BE SITE CHECKED BEFORE CUTTING SMALL BORE PIPING.
  3. PIPING 1/2" & BELOW TO BE GALVANISED.
  4. ERECTOR TO ENSURE THAT FW. LINES ARE TO CLEAR ALL PROCESS LINES, PLATFORMS ETC. WHILST MAINTAINING ADEQUATE SPRAY COVERAGE.

M/NEM	QUN	SIZE	MATERIAL	END	FACE	SC	VALVE	S-SHIP
PIP	160M	4"		BE		40		Y
PIP	100M	3"		BE		40		Y
PIP	30.0M	2"		BE		40		Y
PIP	800M	1 1/2"	GALV	T&C		20		Y
90L	1	4"		BW		40		Y
90L	9	4"		BW		40		Y
90L	2	3"		BW		40		Y
90L	5	2"		BW		40		Y
90L	40	1 1/2"	GALV	SC		300		Y
45L	1	4"		BW		40		Y
45L	2	2"		BW		40		Y
TEE	1	4"		BW		40		Y
TEE	1	1 1/2"	GALV	SC		300		Y
45L	1	2"		BW		40		Y
45L	2	1 1/2"	GALV	SC		300		Y
T&L	1	3"						Y
T&L	5	2"						Y
T&L	2	2"						Y
T&L	2	4"						Y
T&L	2	4"						Y
T&L	1	4"						Y
SQR	4	3/8"	GALV	SC				Y
UNN	7	1 1/2"	GALV	SC				Y
CON	1	6"		BW		40		Y
CON	2	4"		BW		40		Y
CSW	4	2"		BT		300		Y
RCP	10	1 1/2"						Y
CON	2	3"		BW		40		Y
RTE	6	1 1/2"	GALV	SC		300		Y
T&L	2	2"						Y
SQR	6	1 1/2"						Y
RCP	4	1 1/2"	GALV	SC				Y
NPL	4	1 1/2"	GALV	SC		1000		Y
FLG	1	4"		WH	RT	40	150"	Y
FLG	1	6"		WH	RT	40	150"	Y
EQL	1	6" x 24"	GALV	SC		200#		Y
NPL	2	3/4"	GALV	SC		300#		Y
GAT	2	3/4"		SC		200#		Y
EQL	1	4" x 3/4"	GALV	SC		300#		Y

AS BUILT  
TO INFORMATION RECEIVED  
UP TO FEB. 1982

SPECIALS

No	SP No	QUN	DESCRIPTION	Y
1	22F	13	PROTEX CONICAL JET TYPE 28 50L/MIN NOM 7MM φ	Y
2	22C	1	PROTEX HEMISPHERICAL JET NO 27 100L/MIN NOM 10MM φ	Y
3		1	2" SCH 40 x 1 1/2" SCH 80 CONC SWAGE (T&E)	Y
4	22G	5	PROTEX CONICAL JET TYPE 28 100L/MIN NOM 10MM φ	Y

0 12-82 AS-BUILT  
rev. date DESCRIPTION by app.

elf aquitaine norge a/s p.o. box 168 - 4001 Stavanger

TREATMENT PLATFORM No 1

Dwgr. no. FF 95 20 17 2025 Rev. 0 Sheet

APPROVED  
M. DERMOTT HUDSON  
DATE: 27/1/76  
ENGINEERS APPROVAL

PROJECT: TREATMENT PLATFORM NO 1  
STRUCTURAL: JAC  
MECHANICAL: JAC  
ELECTRICAL: JAC  
INSTRUMENT: JAC  
P&ID CHECK: JAC  
PROP. CHECK: JAC

McDERMOTT - HUDSON  
LONDON - ENGLAND

DRAWN BY: E.S. DAVIES  
DESIGNED BY: JAC  
CHECKED BY: JAC

SCALE: 1:33 1/3 @ 1:20  
DATE: 7/3/75

DWG. NO. ELN-2110  
SHEET NO. 580

ISOMETRIC VIEW OF FIREWATER PIPING AT V3 & V33

DESIGN	ELEC	INSTR	PIPING	STRUCT	NO.	BY	DATE	REVISIONS	DATE	APP.	DESIGN	ELEC	INSTR	PIPING	STRUCT	NO.	BY	DATE	REVISIONS	DATE	APP.
					3	BMF	12/2/76	REVISED AS NOTED ALSO INCLUDES REVISION 3A	29/7/76	JAC						2	IW	20/1/76	ROUTING OF 1199EL-4" FW ALTERED.	23/1/76	JAC
					1		19/1/75	AFC. S/CHECKED	29/1/75	JAC						0	J.D.	9/9/75	ISSUED FOR M.T.O.		
					5	NH	12.OCT 1977	AS BUILT.	17/1/77	JAC						4	NH	4/2/77	REVISED TO SITE COMMENT L-97 AS NOTED	9/3/77	JAC