

elf norge a.s

dwg no. FF 231/210.006

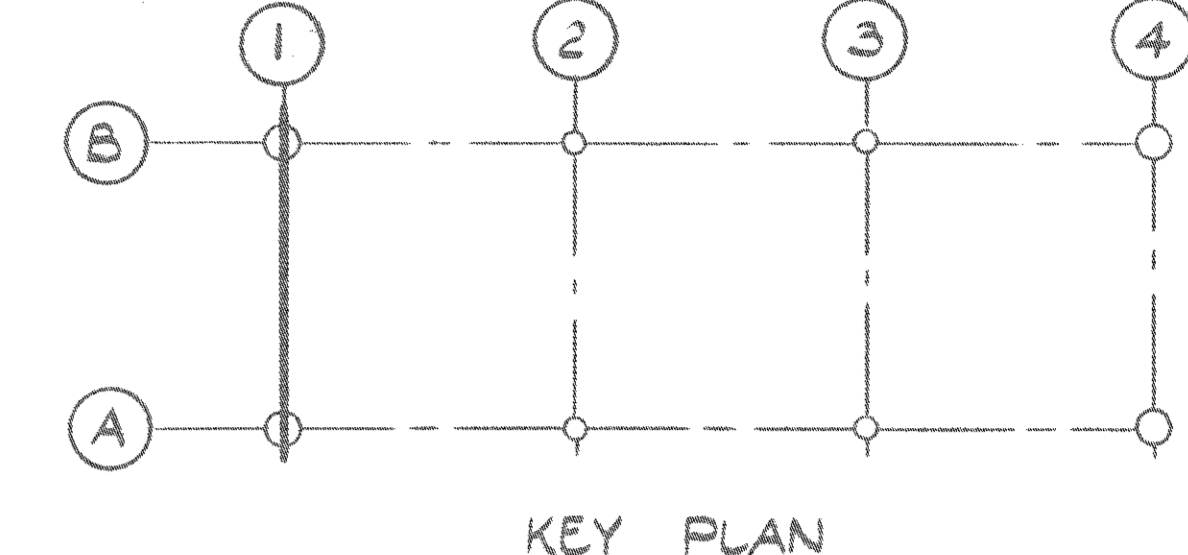
rev. 0 date: 09.10.74

item:

DWG. NO. ELN 02020 SHEET NO. 103

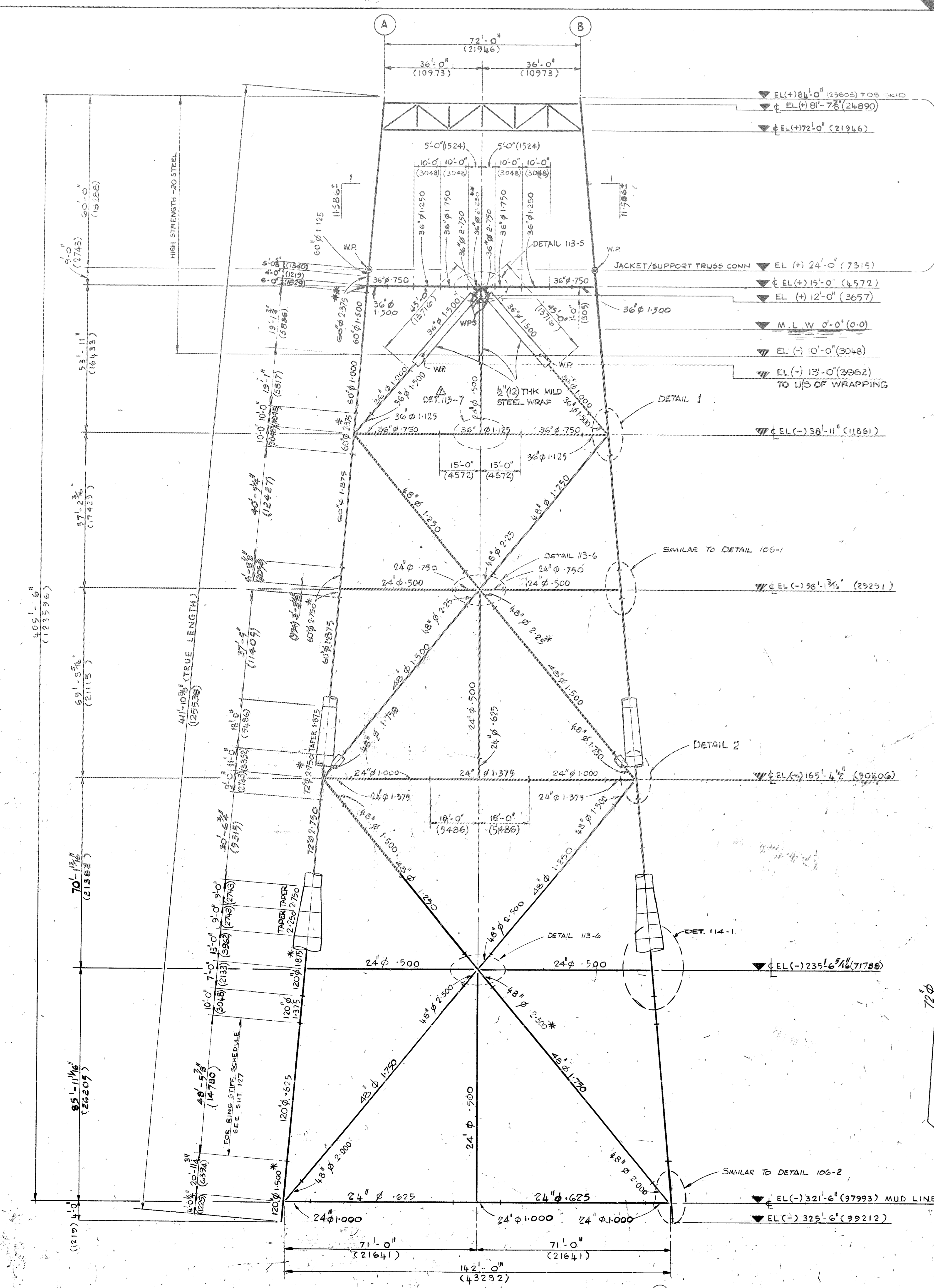
NOTES:-

1. DIMENSIONS SHOWN IN BRACKETS ARE METRIC EQUIVALENTS IN MILLIMETRES
2. ALL MATERIAL TO BE HIGH STRENGTH STEEL UNLESS NOTED.
3. ALL MATERIAL FROM EL. +10'-0" TO EL. +84'-0" TO BE HIGH STRENGTH -20 STEEL.
4. ALL MEMBERS DENOTED THUS (H) TO BE SPECIAL HIGH STRENGTH STEEL.
5. ALL MEMBERS DENOTED THUS (SH) TO BE SPECIAL HIGH STRENGTH -20 STEEL.
6. AFTER INSTALLATION OF SPLASH ZONE WRAP COMPLETED TIGHTNESS OF WELDS TO BE CONFIRMED BY PRESSURING W/WRAP TO 10 P.S.I.G & SOAP TESTING
7. WRAP TO BE SEAL WELDED TOP & BOTTOM & MAKE-UP LENGTHS FABRICATED WITH SEAM WELDS OFF SET BY 30"



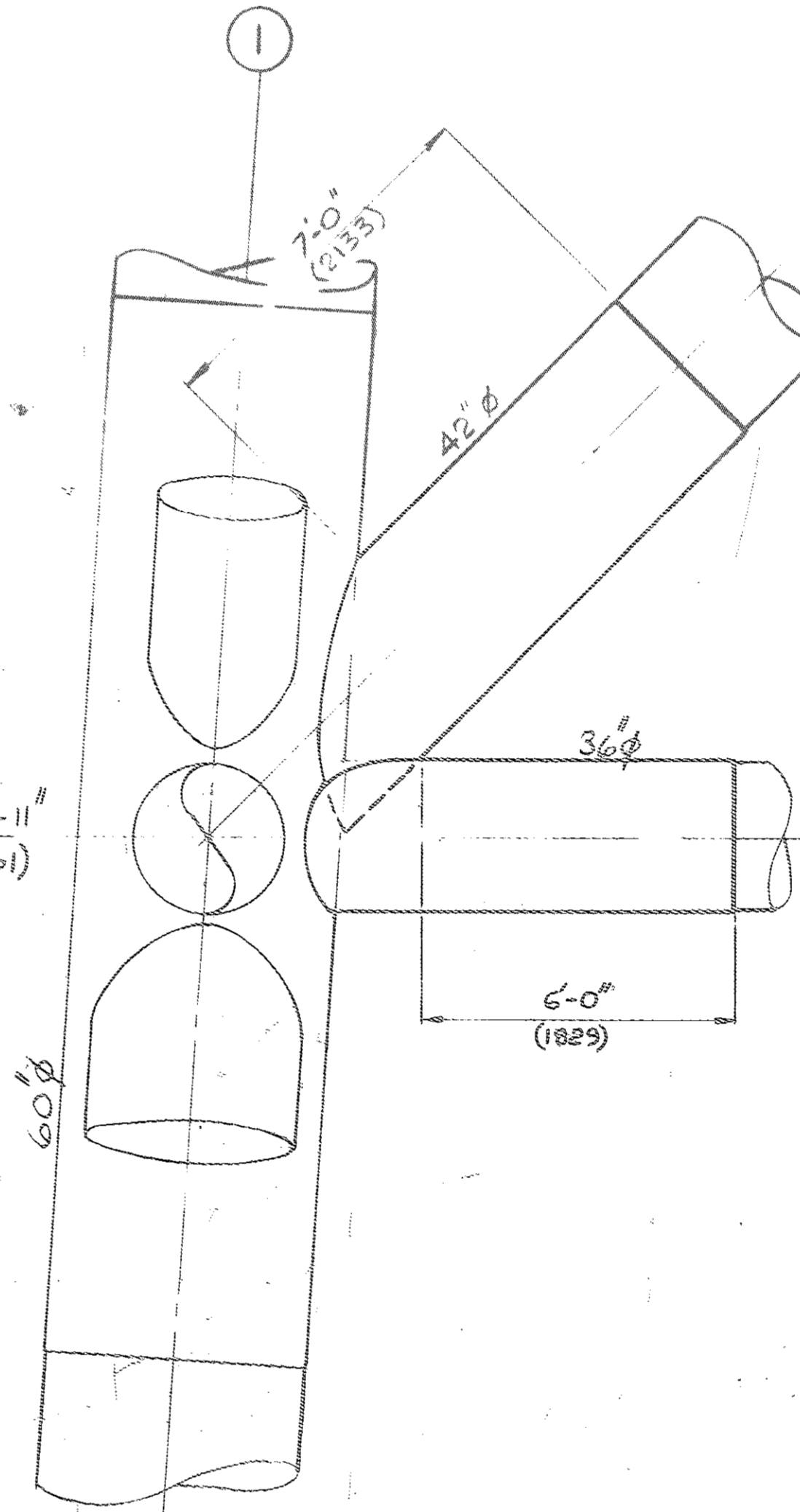
KEY PLAN

PLANT NORTH

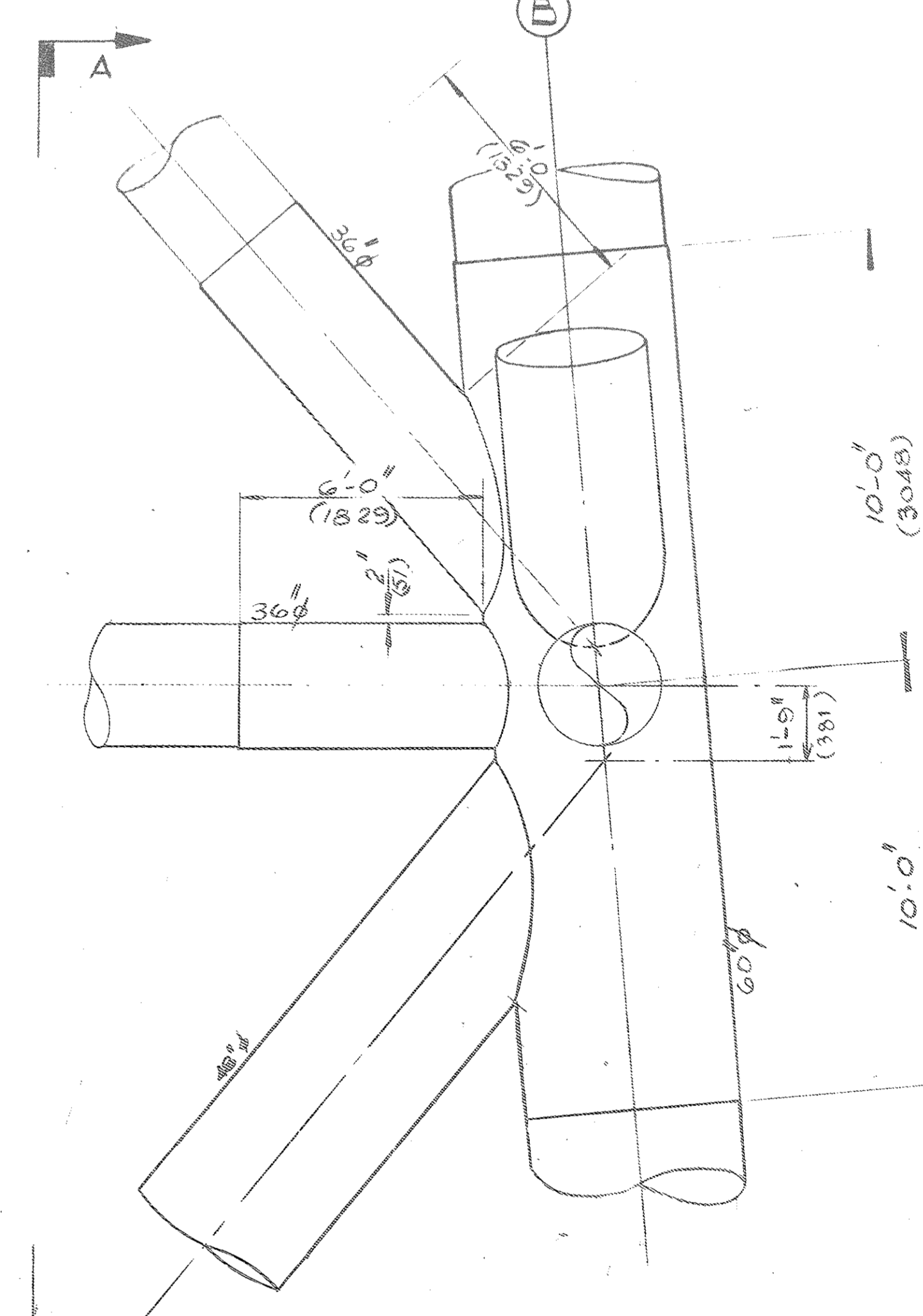


JACKET VERTICAL FRAMING AT COLUMN LINE 1

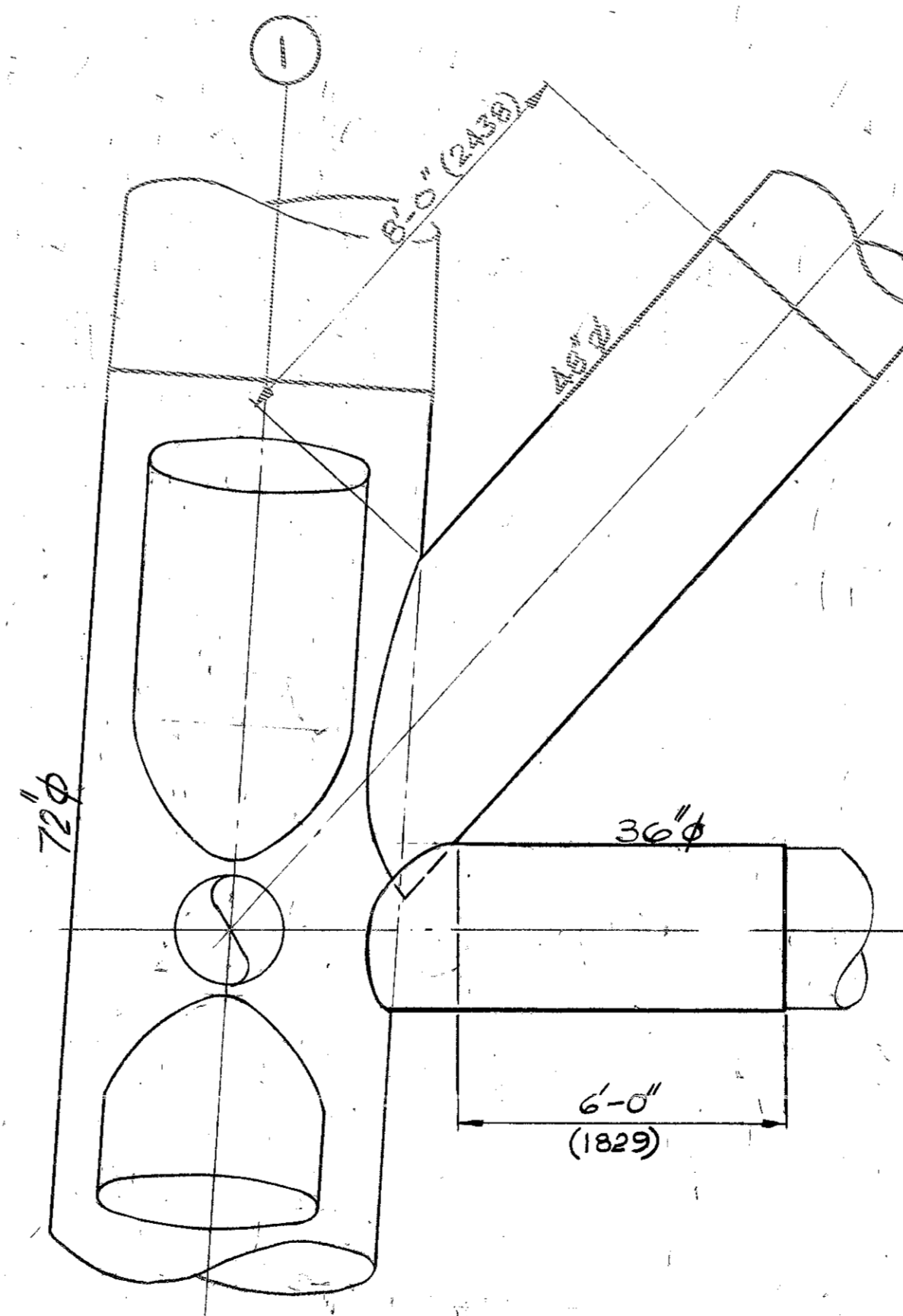
SEE SHIT 100 FOR DETAIL OF SUPPORT TRUSS



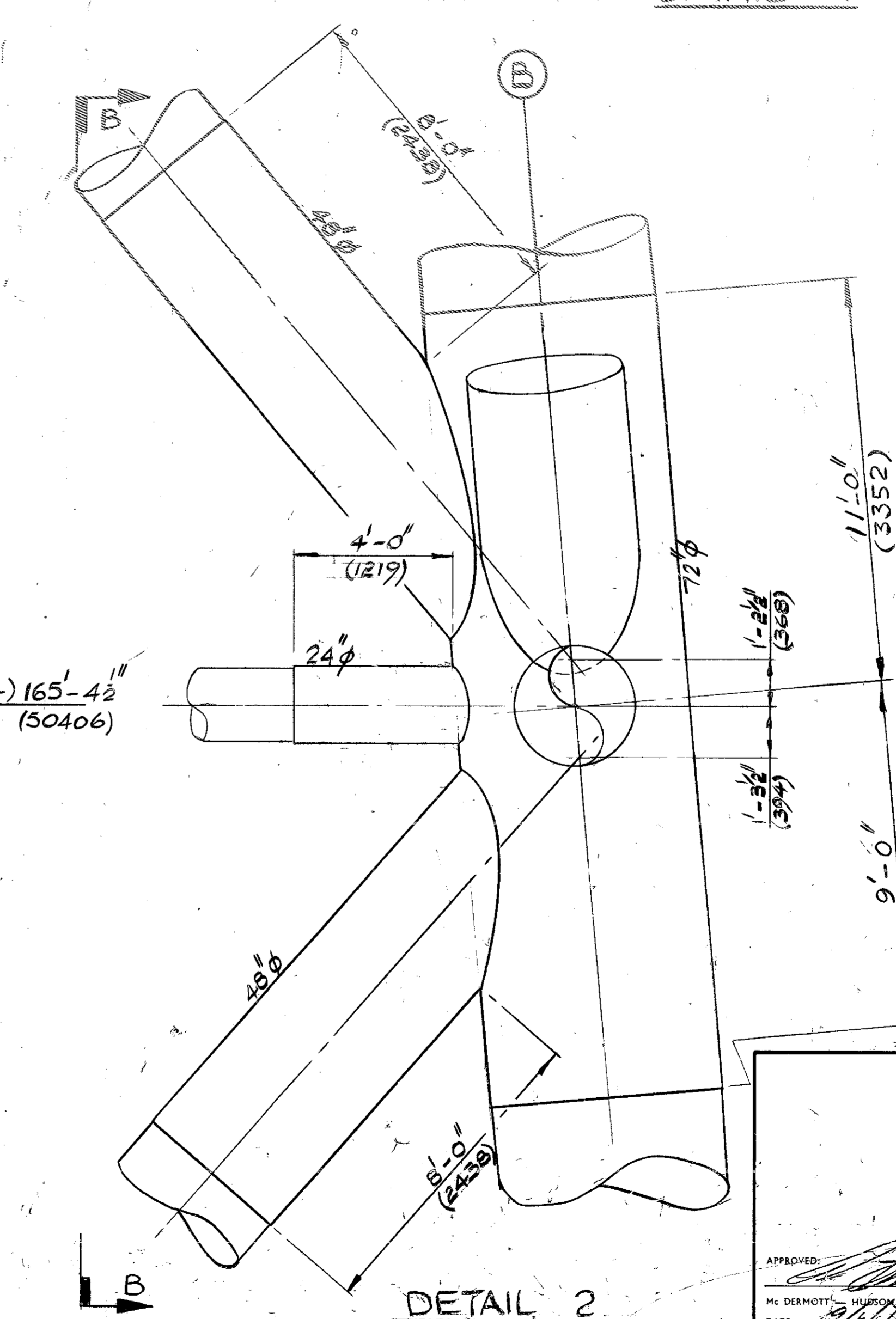
SECTION A-A



DETAIL 1

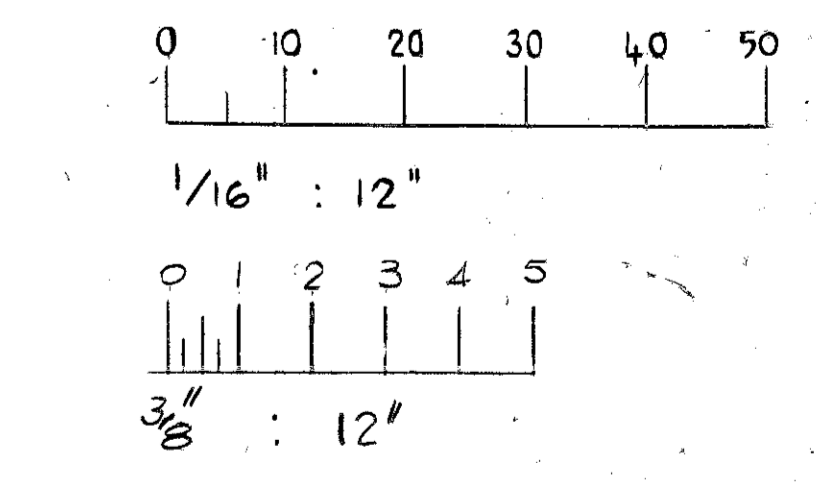


SECTION B-B



DETAIL 2

SCALES:-



elf norge a.s
dwg no. FF 231/210.006
rev. 0 date: 09.10.74

<p>ELF-NORGE A/S NORWAY</p>	
<p>24 WELL SELF CONTAINED DRILLING PLATFORM No 1</p>	
<p>NORH SEA</p>	<p>FRIGG FIELD</p>
<p>WU 98 N1</p>	
<p>MCDERMOTT - HUDSON</p>	
<p>LONDON - ENGLAND</p>	
<p>PROJECT: 231/210.006</p>	<p>DATE: 09/10/74</p>
<p>DESIGNED BY: R. GAIR</p>	<p>DATE: 09/10/74</p>
<p>CHECKED BY: R. GAIR</p>	<p>DATE: 09/10/74</p>
<p>APPROVED BY: [Signature]</p>	<p>DATE: 09/10/74</p>
<p>PROJECT: 231/210.006</p>	<p>DATE: 09/10/74</p>
<p>DESIGNED BY: R. GAIR</p>	<p>DATE: 09/10/74</p>
<p>CHECKED BY: R. GAIR</p>	<p>DATE: 09/10/74</p>
<p>APPROVED BY: [Signature]</p>	<p>DATE: 09/10/74</p>

DESIGN	STRUCT	PIPING	ELEC	ME	BY	DATE	REVISIONS	DATE	APP	DESIGN	STRUCT	PIPING	ELEC	ME	BY	DATE	REVISIONS	DATE	APP
							DETAIL 113-7 INDICATED										EL (-) 15'-0" ADDED		
							NOTE 7 ADDED (36" W/WRAP TO 30P CONDUCTORS)										CHANGE FROM 20P TO 30P		
							NOTE 8 ADDED (36" W/WRAP TO 30P CONDUCTORS)										CHANGE FROM 20P TO 30P		
							NOTE 9 ADDED (36" W/WRAP TO 30P CONDUCTORS)										CHANGE FROM 20P TO 30P		
							NOTE 10 ADDED (36" W/WRAP TO 30P CONDUCTORS)										CHANGE FROM 20P TO 30P		