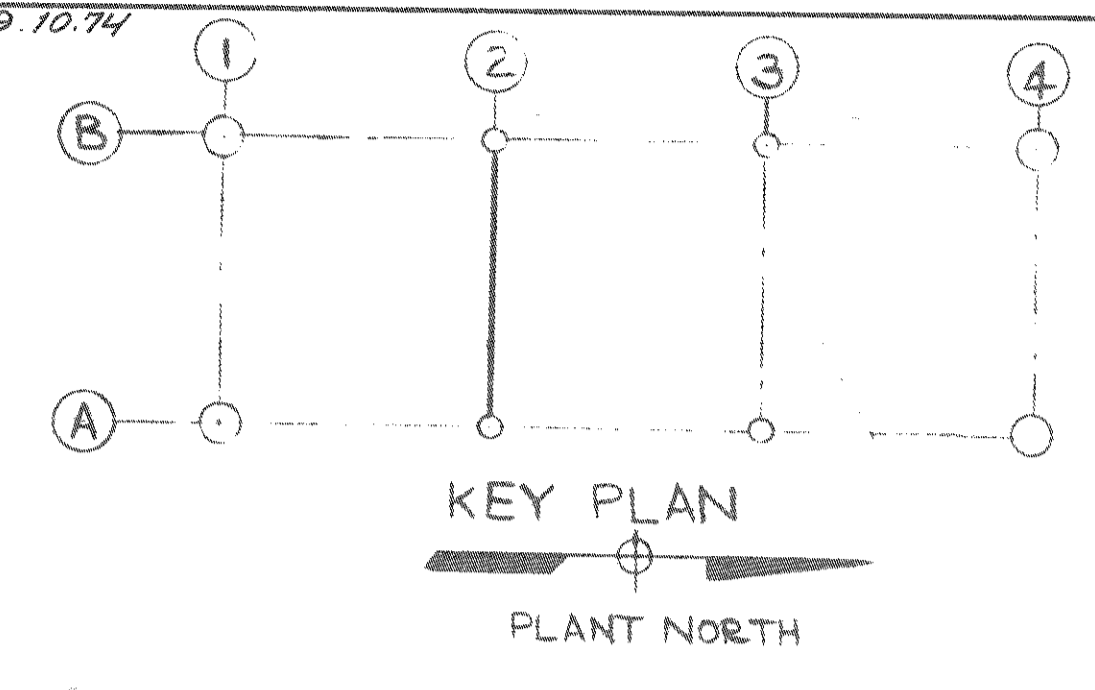


elf norge a/s  
 dwg no: FF 931.210.007

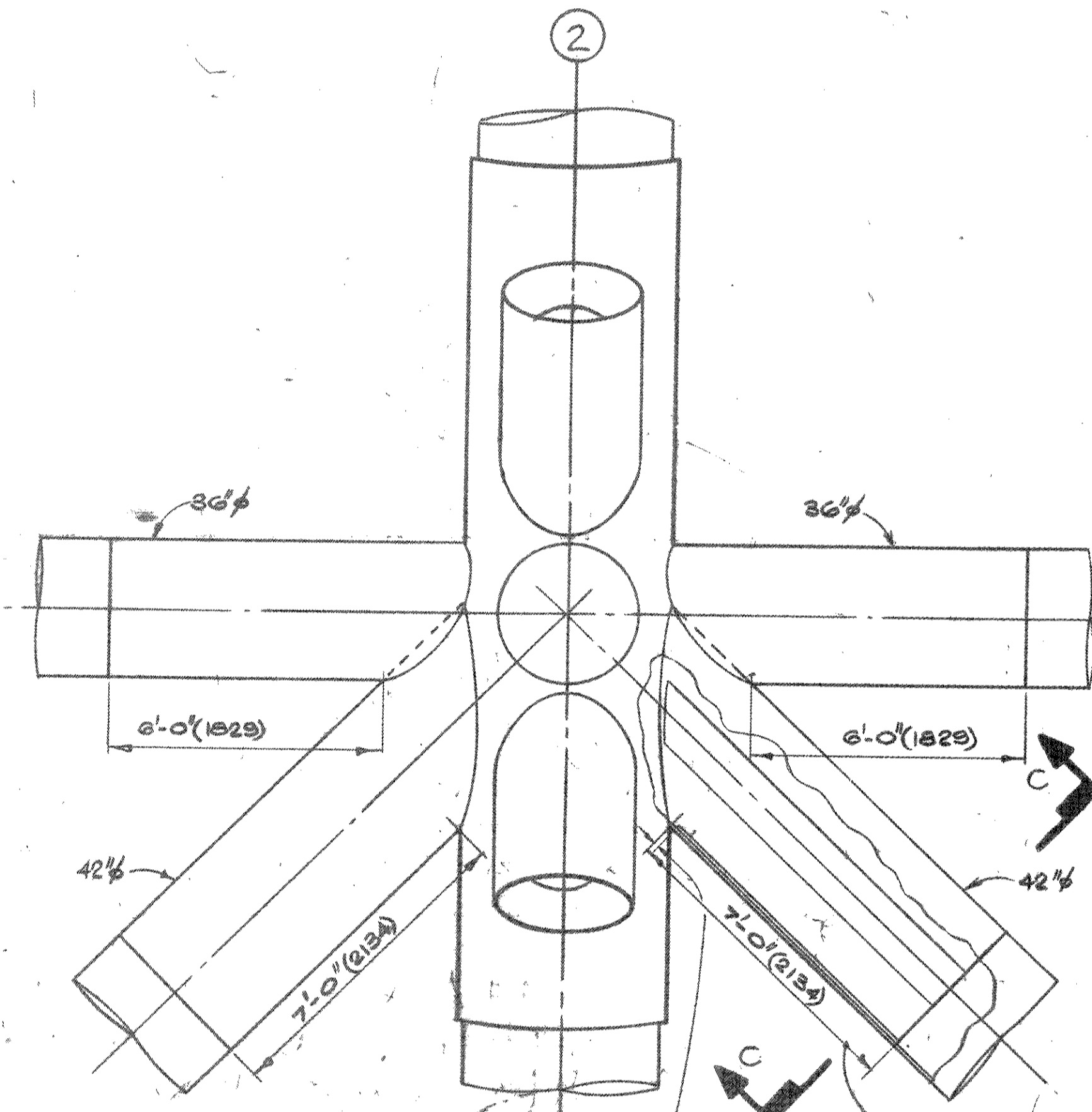
DWG NO: ELN 02020  
 SHEET NO: 104

rev: 0 date: 09.10.74  
 item:

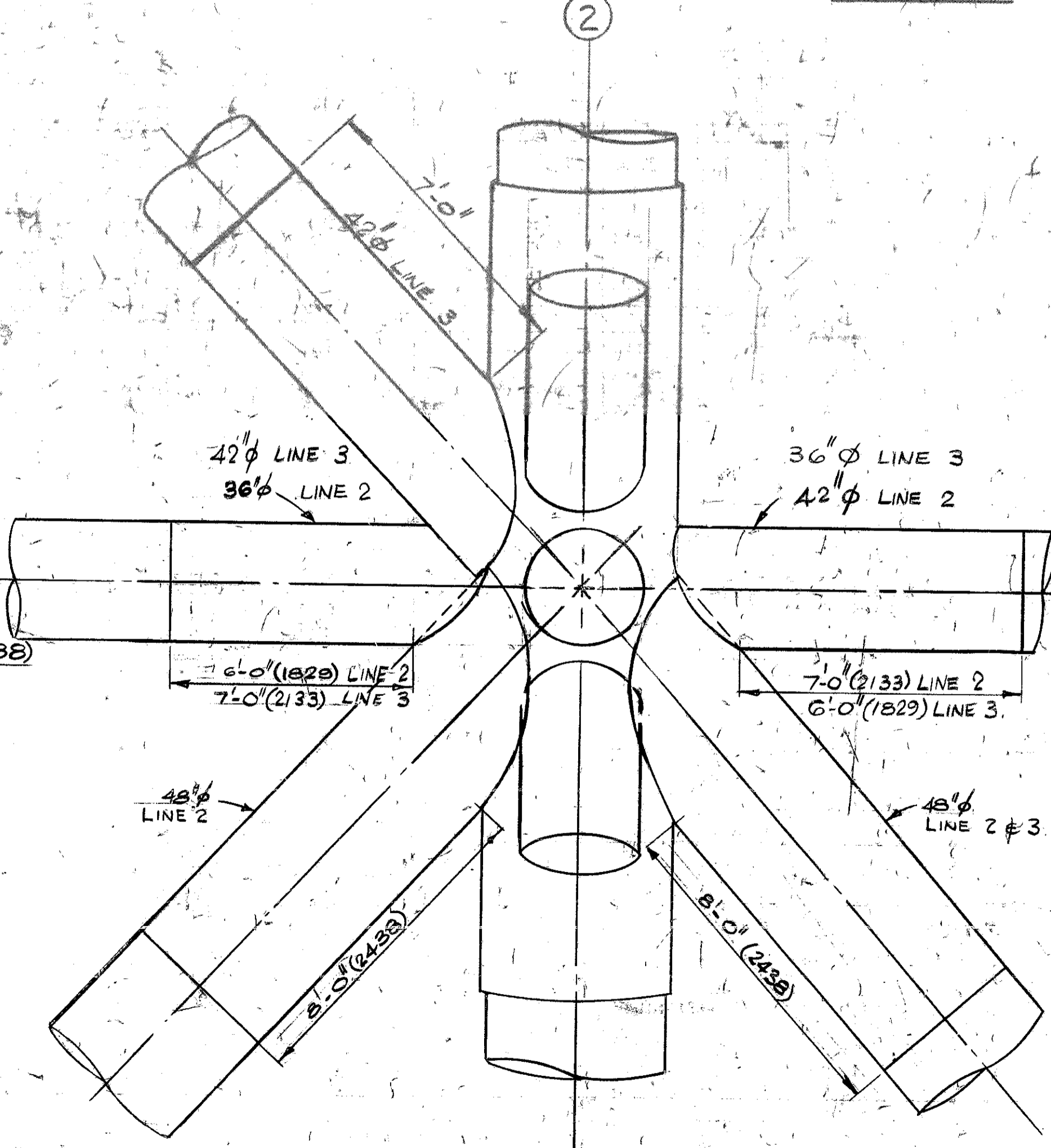


- NOTES:-
- DIMENSIONS SHOWN IN BRACKETS ARE METRIC EQUIVALENTS IN MILLIMETRES
  - ALL STEEL MEMBERS ON THIS SHIT TO BE HIGH STRENGTH STEEL, UNLESS NOTED
  - ALL MATERIAL FROM EL. +3.0 TO EL. +8.0 TO BE HIGH STRENGTH -20 STEEL
  - ALL MEMBERS DENOTED THUS \* TO BE SPECIAL HIGH STRENGTH STEEL
  - ALL MEMBERS DENOTED THUS \*\* TO BE SPECIAL HIGH STRENGTH -20 STEEL
  - AFTER INSTALLATION OF SPLASH ZONE WRAP COMPLETED TIGHTNESS OF WELDS TO BE CONFIRMED BY PRESSURING U/W WRAP TO 10 PSIG. SOAP TESTING
  - WRAP TO BE SEAL WELDED TOP & BOTTOM & MAKE-UP LENGTHS FABRICATED WITH SEAM WELDS OFF SET BY 30°

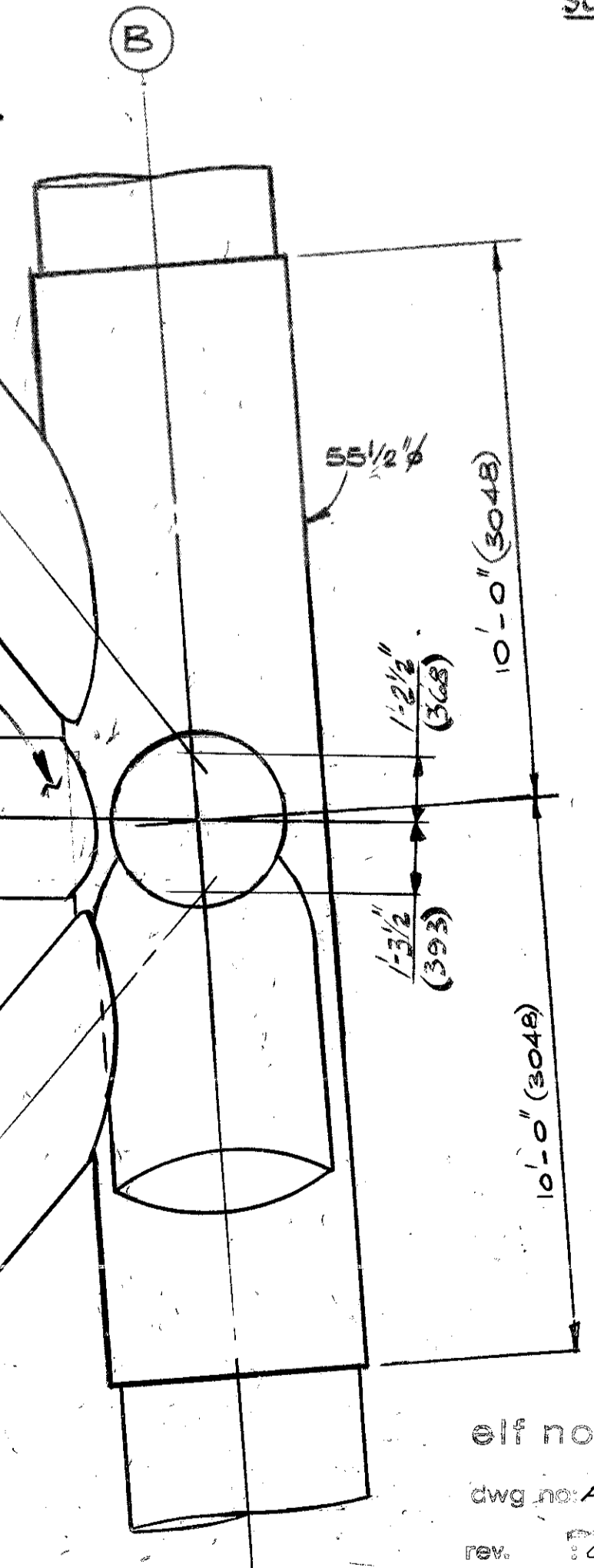
SECTION C-C  
 SCALE: 3/8" = 1'-0"



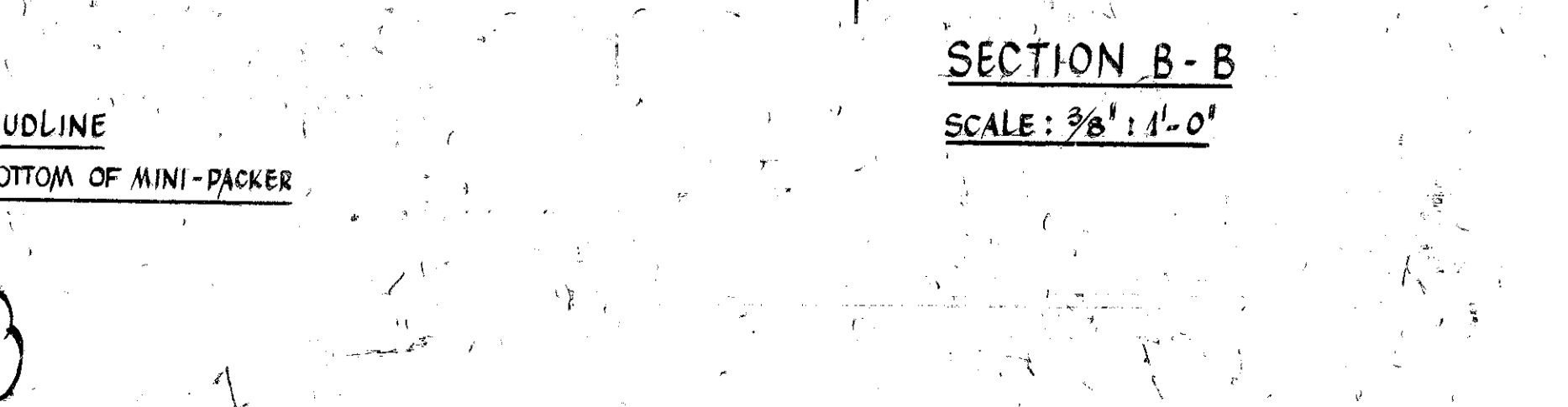
SECTION A-A  
 SCALE: 3/8" = 1'-0"



DETAIL 1  
 SCALE: 3/8" = 1'-0"



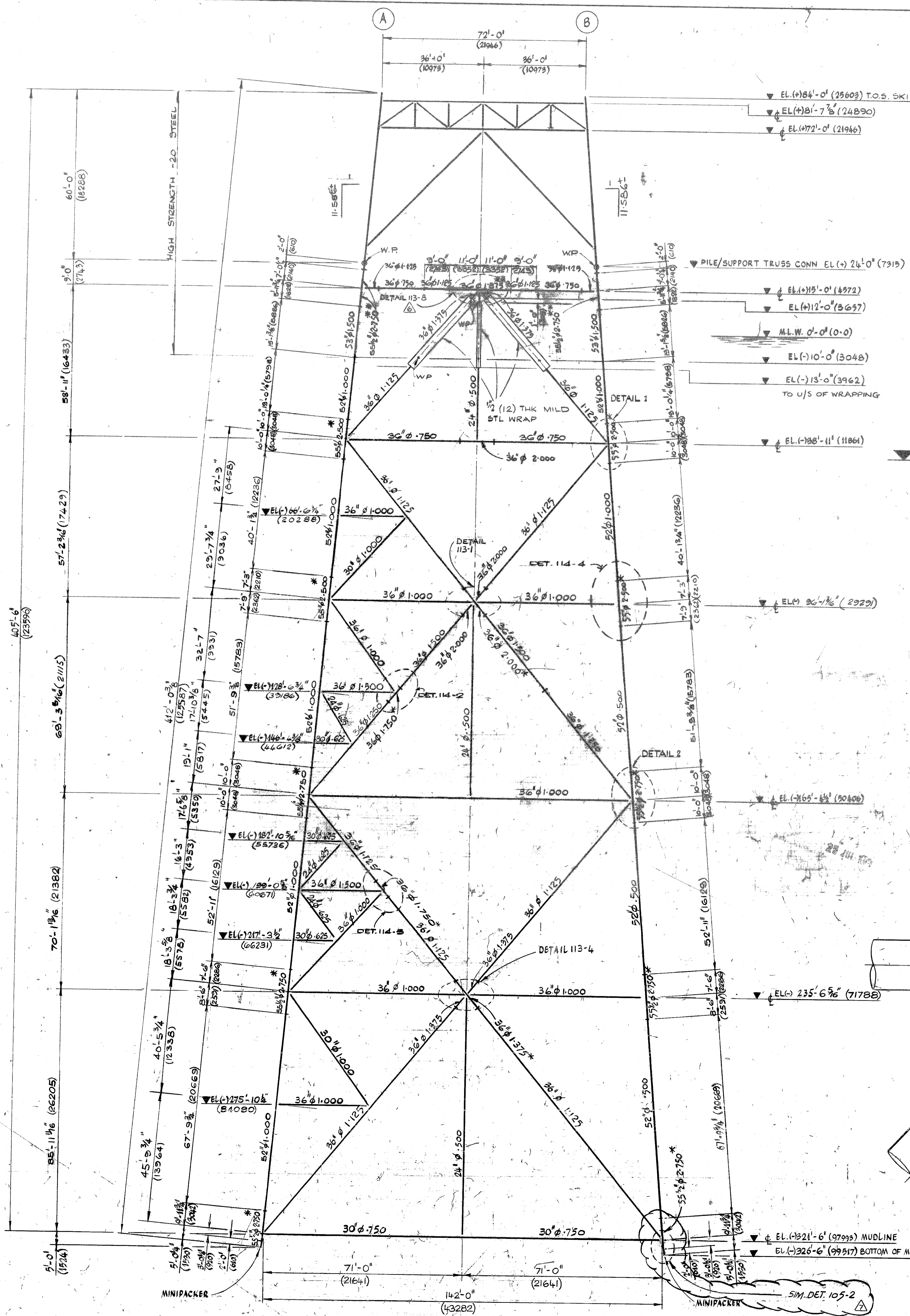
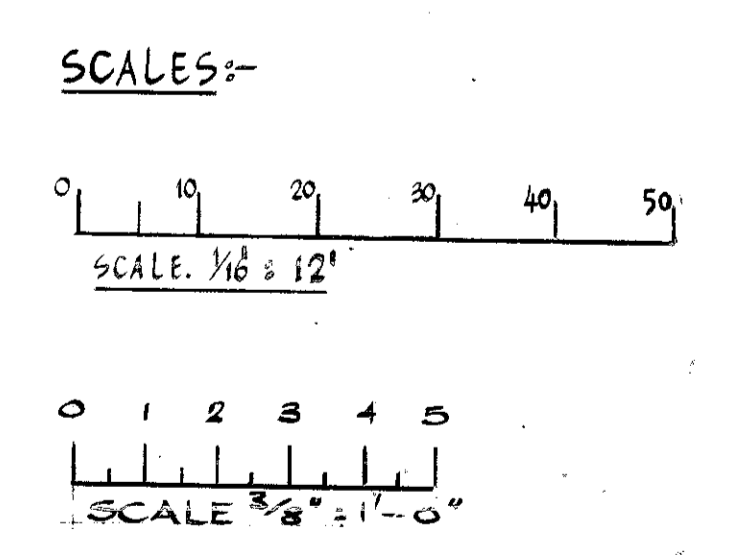
SECTION B-B  
 SCALE: 3/8" = 1'-0"



DETAIL 2  
 SCALE: 3/8" = 1'-0"



REFERENCE DRAWINGS:-  
 MCH. DWGS:-  
 JACKET VERTICAL FRAMING | ELN 02020  
 AT COL. LINE A | SHIT NO 101



JACKET VERTICAL FRAMING AT COL. LINE 2  
 SCALE: 1/8" = 1'-0"

DESIGN	STRUCT	PIPING	ELEC	ME	BY	DATE	REVISIONS	DATE	APP	DESIGN	STRUCT	PIPING	ELEC	ME	BY	DATE	REVISIONS	DATE	APP

**ELF-NORGE A/S**  
**NORWAY**

24 WELL SELF CONTAINED  
**DRILLING PLATFORM No 1**

NORTH SEA FRIGG FIELD WD 98 M

**McDERMOTT - HUDSON**  
 LONDON - ENGLAND

APPROVED: [Signature]  
 DATE: 10/11/74

DRAWN BY: R. GAIR  
 SCALE: 3/8" = 1'-0"  
 DATE: 10 NOV. 1972  
 DWG. NO: ELN 02020  
 SHEET NO: 104

JACKET VERTICAL FRAMING AT COL. LINE 2