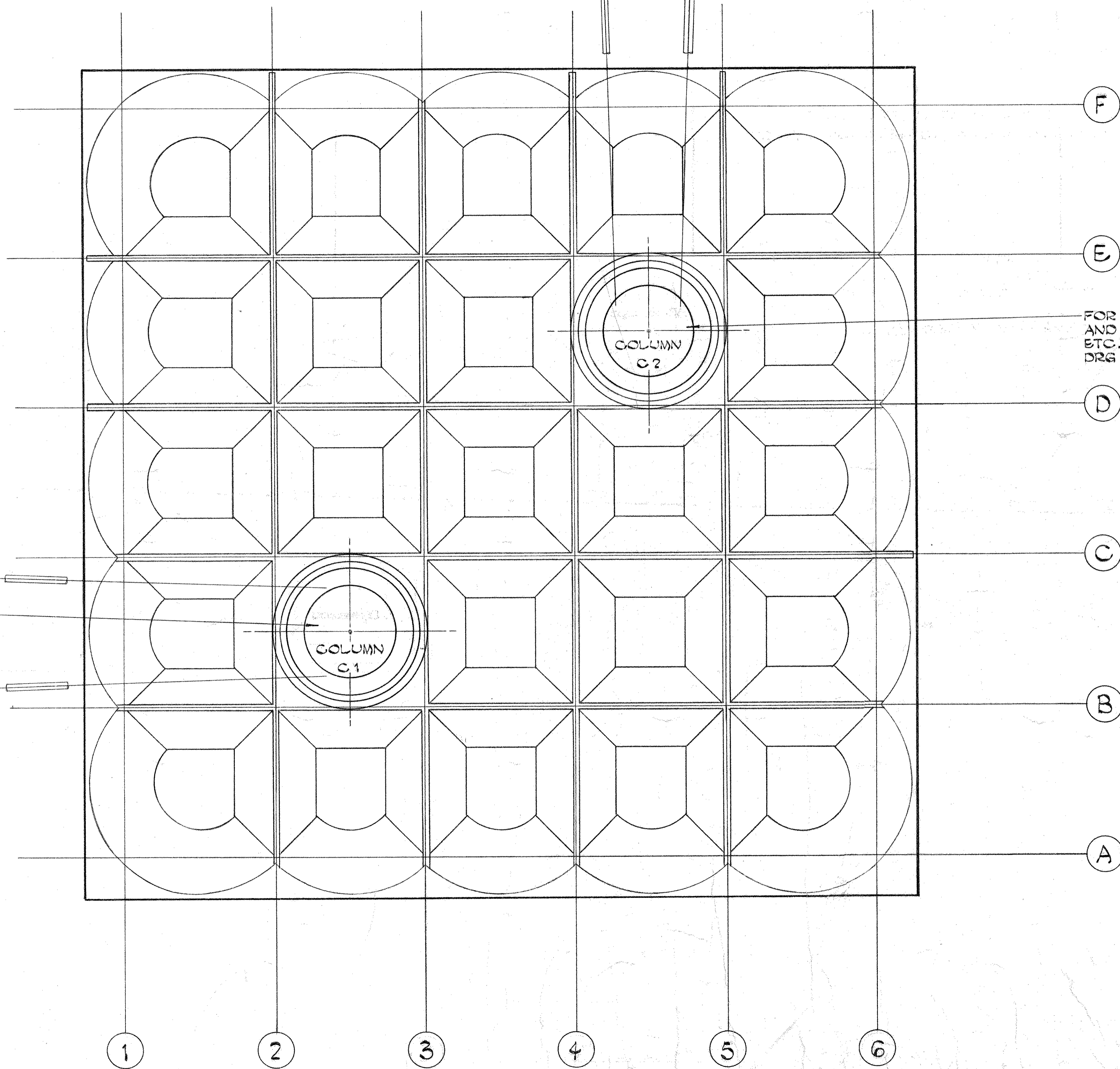


R7 24" INTERNAL RISER

R8 32" INTERNAL RISER



F

E

D

C

B

A

FOR CO-ORDINATION LAYOUTS  
AND SECTIONS OF SERVICES  
ETC. FOR COLUMN C2 SEE  
DRG A1-TP-L 314

R5 26" INTERNAL RISER

FOR CO-ORDINATION LAYOUTS  
AND SECTIONS OF SERVICES  
ETC. FOR COLUMN C1 SEE  
DRG A1-TP-L 297

R6 26" INTERNAL RISER

BROWN & ROOT (U.K.) LTD.  
APPROVED FOR  
CONSTRUCTION

TREATMENT PLATFORM No.1 T.P.1.  
KEY PLAN OF CO-ORDINATION  
DRGS FOR COLUMNS C1 AND C2

NUMBER	REFERENCE DRAWINGS TITLE	REV. NO.	REVISION	BY	DATE	CHKD
		A	CONSTRUCTION ISSUE		2002	

**Brown & Root, (U.K.) Ltd.**  
Engineers/Constructors  
LONDON, ENGLAND.

DRAWN: CBF  
CHECKED: CJS  
CHECKED: [Signature]  
APPROVED: [Signature]  
BY: CBF  
DATE: 2-2-76

**elf** **ELF. NORGE - A/S**

FRIGG FIELD DEVELOPMENT PROJECT

SCALE	PROJECT No.	DRAWING NUMBER	REV.
1:200	78-5711	A1-TP-L307	A