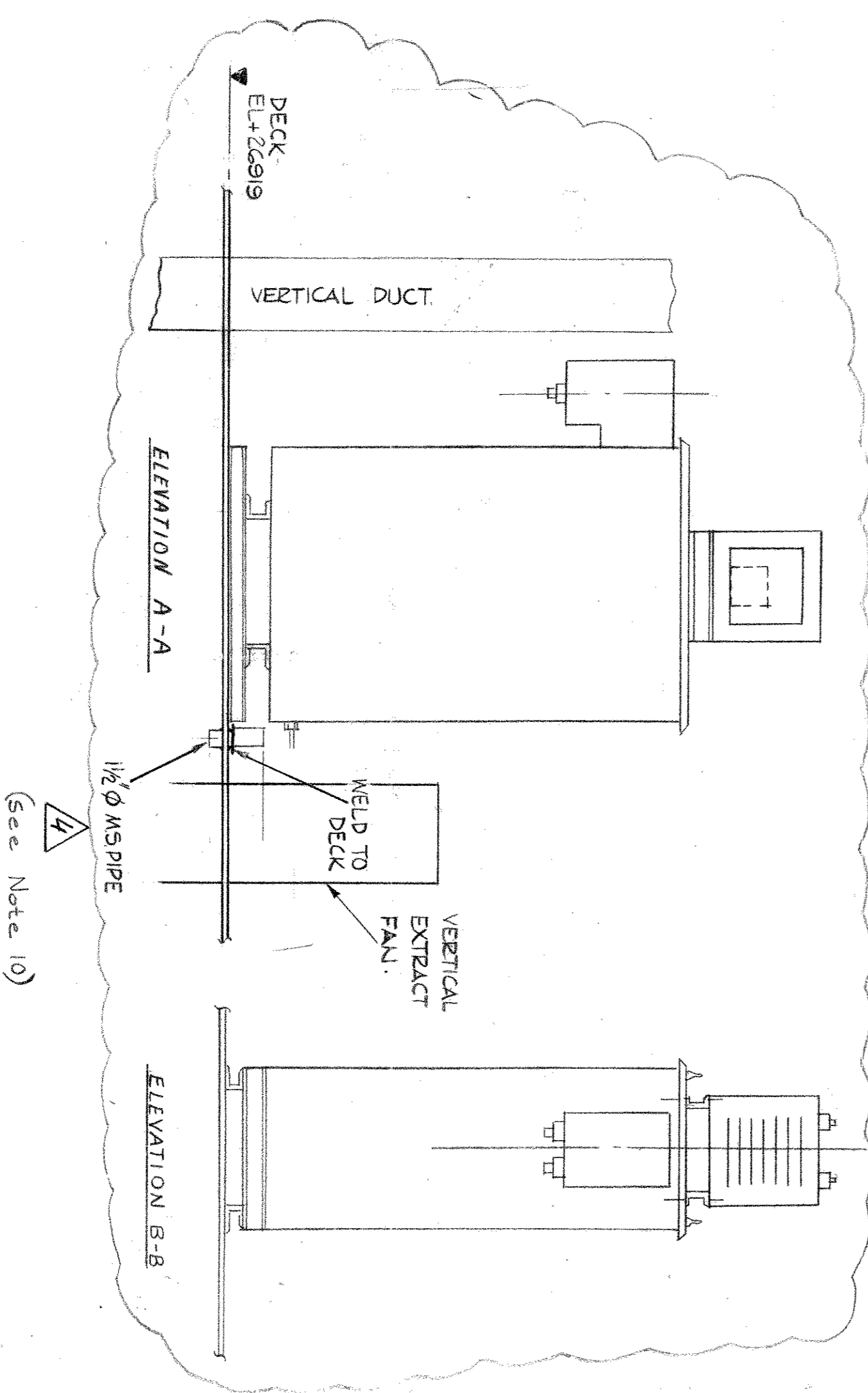
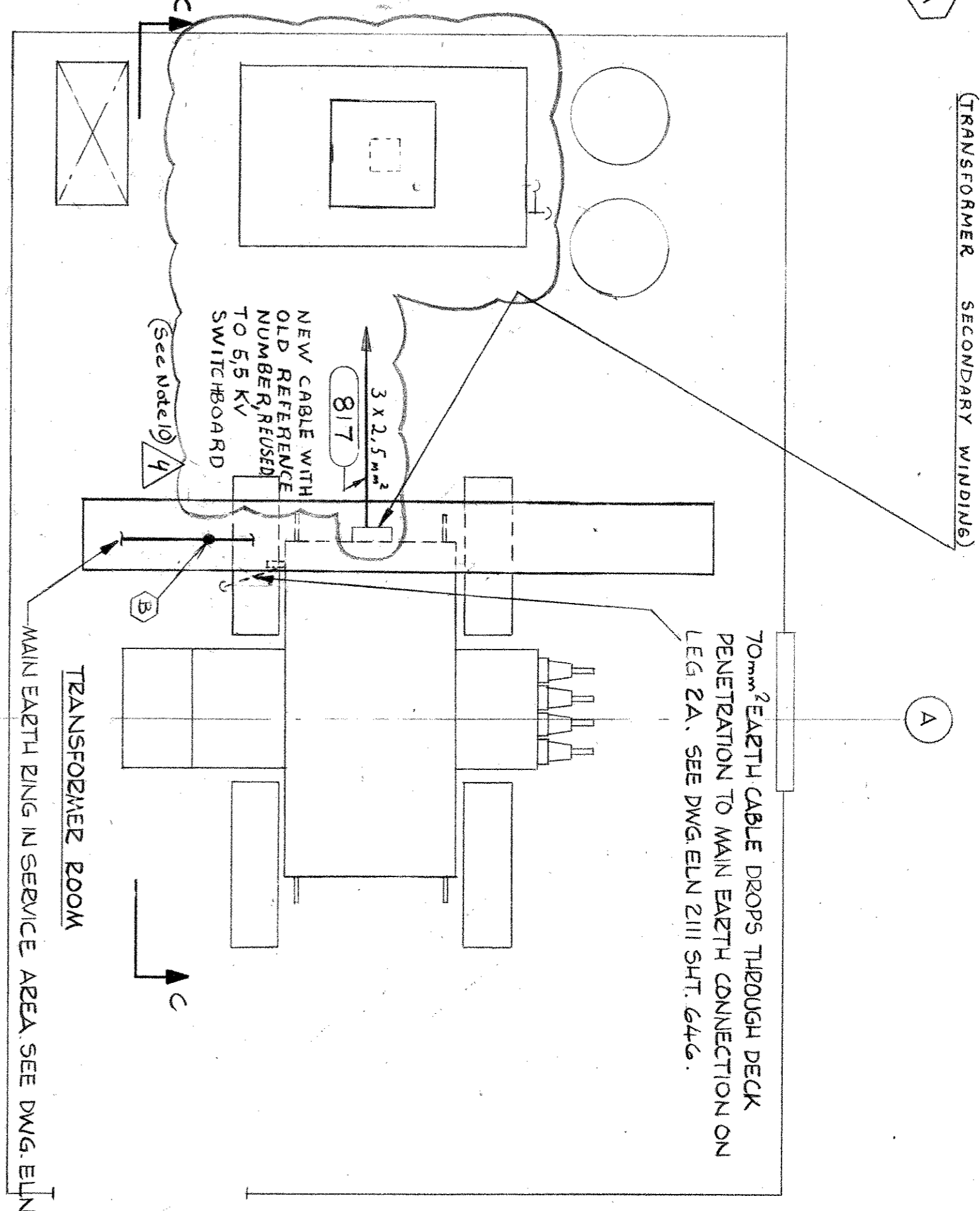


PLAN VIEW

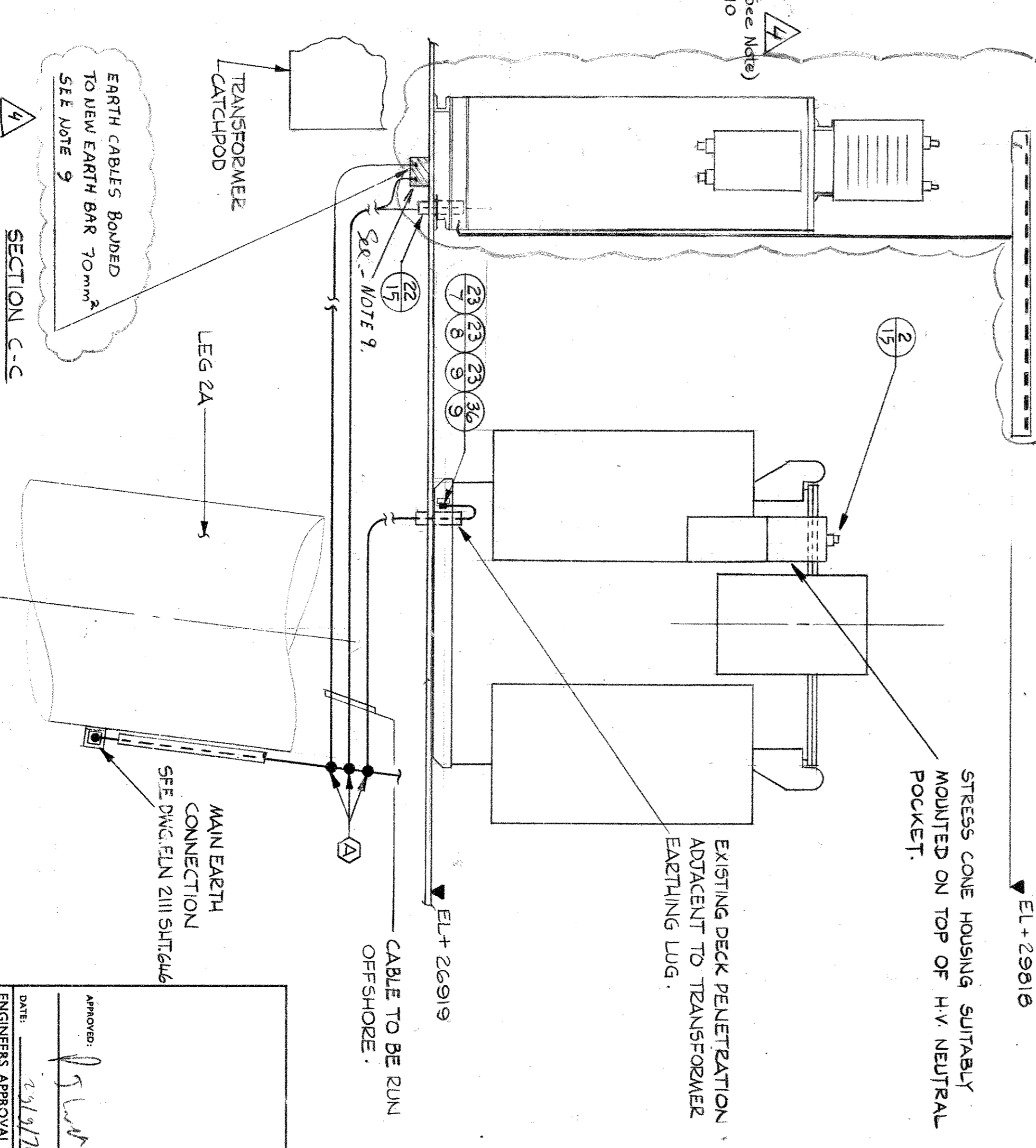


ELEVATION A-A

ELEVATION B-B



PLAN VIEW



SECTION C-C

ITEM#	DESCRIPTION	QTY
2-15	25mm CABLE GLAND WITH LOCKNUT & SHROUD	2
23-8	M10 HEX HEAD NUT	3
23-9	M10 LOCKWASHER	3
23-18	M12 HEX HEAD NUT	1
23-19	M12 LOCKWASHER	1
36-34	HYLUG CAT REF YAV25 - M12	1
36-35	HYLUG CAT REF YAV4C - M10	1
23-7	M10 x 38 HEX HEAD SET SCREW	2
22-15	1 1/2" Ø SCHEDULE 40 PIPE	AS REQD
41-12	50mm(2") WIDE CABLE TRAY	AS REQD
36-9	HYLUG CAT REF YAV25 - M10	2
22-3	100 x 50 x 6 CHANNEL	AS REQD
2-1	205 CABLE GLAND WITH LOCKNUT & SHROUD.	1
2-14	20mm CABLE GLAND WITH LOCKNUT & SHROUD	3
23-5	M6 HEX HEAD NUT.	8
23-6	M6 LOCKWASHER.	8
23-32	M6 x 25 HEX HEAD SET SCREW.	8
36-36	HYLUG CAT REF YAV4C-M12.	1

LEGEND.

—	CABLE ROUTE
—	CABLE DROPPING
—	CADWELDED CONNECTION.

- NOTES
1. DENOTES REQUISITION RZ ON REQUISITION INDEX DWG. ELN 2111-69
 2. DENOTES ITEM 10 ON REQUISITION.
 - 2 WEIGHT OF NEUTRAL EARTH RESISTANCE = 1120 LBS (508.6 kg).
 3. ALL WELDS AND STEELWORK TO BE PROTECTED TO ELF-NORGE SPECIFICATION NO. 2.
 4. EARTHING CABLE TO BE SINGLE CORE STRANDED COPPER CONDUCTOR GREEN PVC COVERED.
 5. EARTHING CONNECTIONS HAVE BEEN GIVEN A DETAIL REFERENCE LETTER THUS: (A) FOR DETAILS REFER TO DWG. ELN 2111 SHT 639.
 6. MAXIMUM SPACING OF CABLE TRAY SUPPORTS IS 1.5m.
 7. FOR DETAILS OF CABLE TRAY SUPPORTS SEE DWG. ELN 2111 SHT 637 PAGE 1
 8. FOR DETAILS OF NEUTRAL EARTH RESISTANCE SEE DWG. ELN 2111 SHT 639.
 9. NEW EARTH BAR IS SIMILAR TO DWG. NO. ELN 2111 SHT 639 P. 4
 10. NEUTRAL EARTH RESISTANCE DISCONNECTED

REFERENCE DRAWINGS.

DWG. NO. SHT.	TITLE
ELN2111	GRID LOCATION OF EARTH RING ELECTRODES ON PLATFORM
ELN2111 (639)	EARTHING DETAILS
ELN2111 (637)	CABLE RACK SUPPORT DETAILS (NOT APPLICABLE)
ELN2111 (637)	EARTHING LAYOUT SERVICE AREA
ELN2111 (639)	BLOCK CABLING DIAGRAM & DETAILS - NEUTRAL EARTH RESISTANCE

APPROVED: *[Signature]* DATE: 23/9/76

ENGINEERS APPROVAL:

NO.	BY	DATE
1	AS	22/7/76
2	AS	23/9/76

PROJECT: FRIGG FIELD

CLIENT: off aquitaine norge as P.O. Box 188, 4001 Stavanger

SCALE: 1:20

DATE: 1 SEPT 76

DWG. NO. ELN 2111

DESIGNED BY: AZN

SHEET NO. 690

MDERMOTT - HUDSON

LONDON - ENGLAND

FRIGG FIELD.

DATE: 23/9/76

FF 96-23-17 6136 251-79

FAB. STOR. REQ'D. THIS SHT

DESIGN	ELEC.	INSTR.	PRING STRUCT.	NO.	BY	DATE	REVISIONS	DATE	APP.	DESIGN	ELEC.	INSTR.	PRING STRUCT.	NO.	BY	DATE	
				1	JF	18-1-77	ISSUED FOR APPROVAL/AFC	18-5-76						2	SL	23-9-77	REV # ISSUED TO AS BUILT INFO