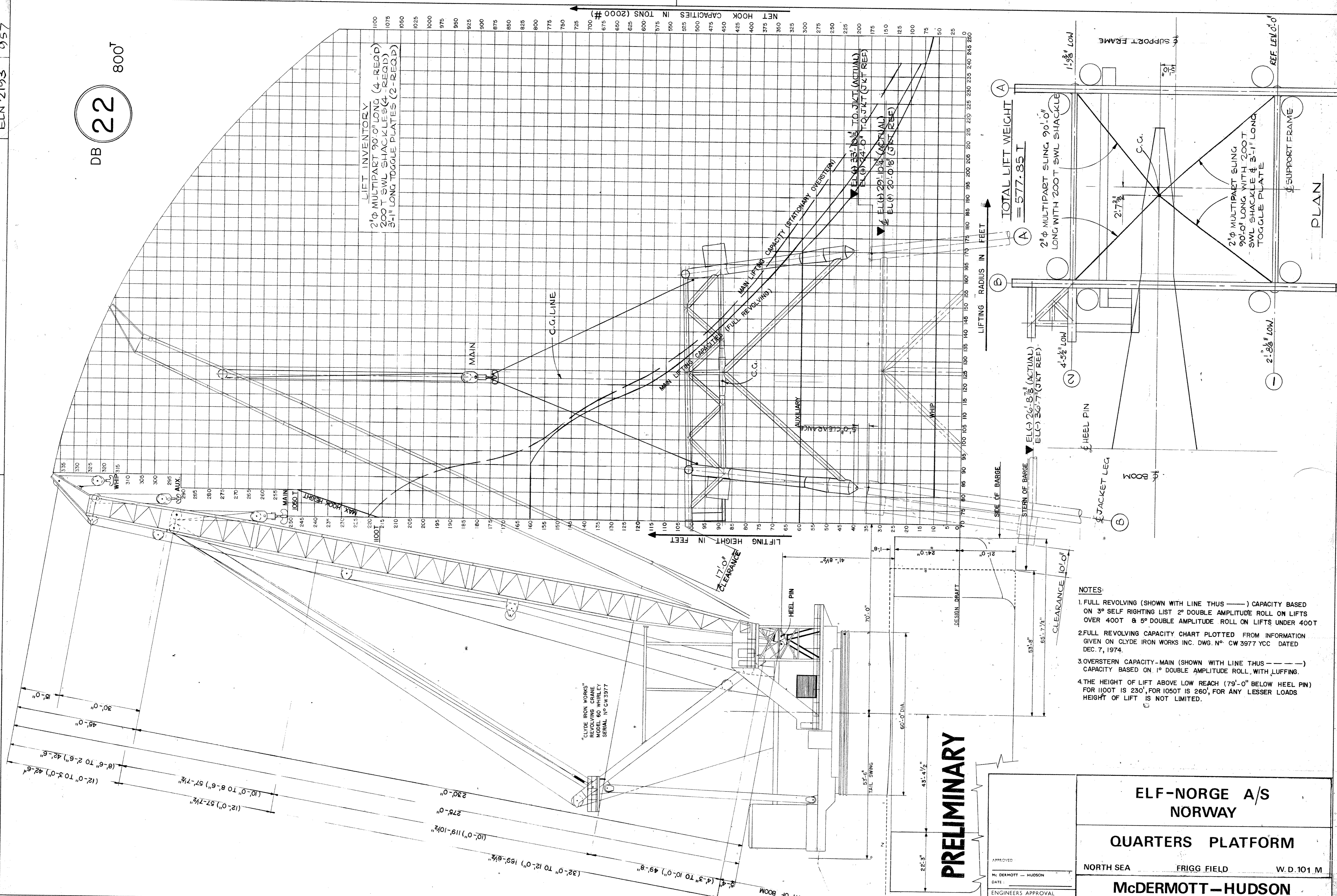


DB 22 800'

NET HOOK CAPACITIES IN TONS (2000 #)

LIFT INVENTORY  
 2" φ MULTIPART 90'-0" LONG (4-REQD)  
 200 T SWL SHACKLES (4-REQD)  
 3'-1" LONG TOGGLE PLATES (2-REQD)



TOTAL LIFT WEIGHT  
 = 577.85 T

ELC 20'-8 3/4" (ACTUAL)  
 ELC 30'-7" (JKT REF.)

ELC 20'-8 3/4" (ACTUAL)  
 ELC 30'-7" (JKT REF.)

- NOTES:
1. FULL REVOLVING (SHOWN WITH LINE THUS  $\text{---}$ ) CAPACITY BASED ON 3° SELF RIGHTING LIST 2° DOUBLE AMPLITUDE ROLL ON LIFTS OVER 400T & 5° DOUBLE AMPLITUDE ROLL ON LIFTS UNDER 400T
  2. FULL REVOLVING CAPACITY CHART PLOTTED FROM INFORMATION GIVEN ON CLYDE IRON WORKS INC. DWG. NO. CW 3977 YCC DATED DEC. 7, 1974.
  3. OVERSTERN CAPACITY - MAIN (SHOWN WITH LINE THUS  $\text{---}$ ) CAPACITY BASED ON 1° DOUBLE AMPLITUDE ROLL WITH LUFFING.
  4. THE HEIGHT OF LIFT ABOVE LOW REACH (79'-0" BELOW HEEL PIN) FOR 1100T IS 230', FOR 1050T IS 260', FOR ANY LESSER LOADS HEIGHT OF LIFT IS NOT LIMITED.

**PRELIMINARY**

APPROVED  
 MCDERMOTT - HUDSON  
 DATE:  
 ENGINEERS APPROVAL

PROJECT	BY	DATE
STRUCTURAL		
Mechanical		
Electrical		
Instrument		
FAB. CHECK		
PROP. CHECK		

**ELF-NORGE A/S**  
 NORWAY

**QUARTERS PLATFORM**

NORTH SEA FRIGG FIELD W.D.101 M

**MCDERMOTT-HUDSON**  
 LONDON - ENGLAND

DRAWN BY: M.L. SCALE: 1/16" = 1'-0" DATE: 20 MAY 75 DWG NO: ELN 2193  
 DESIGNED BY: SHEET NO: 957

LIFTING CHART-SUPPORT FRAME 577.85T(NORTH)

DESIGN	ELEC	INSTR	PIPING	STRUCT	NO	BY	DATE	REVISIONS	DATE	APP	DESIGN	ELEC	INSTR	PIPING	STRUCT	NO	BY	DATE