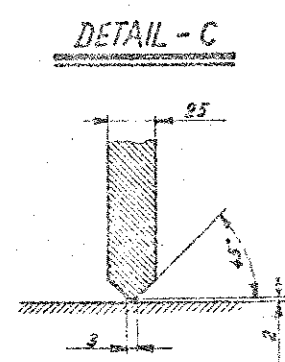
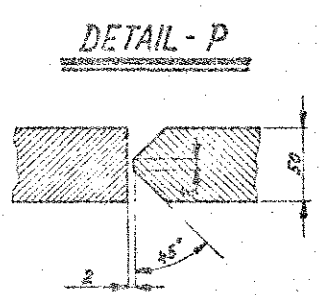
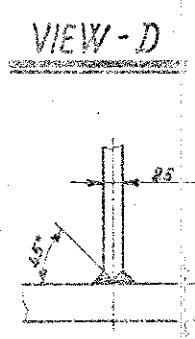
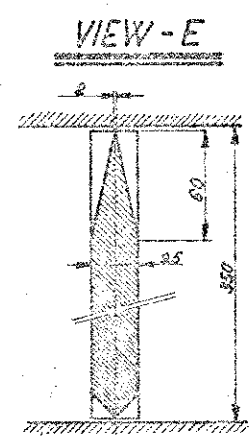
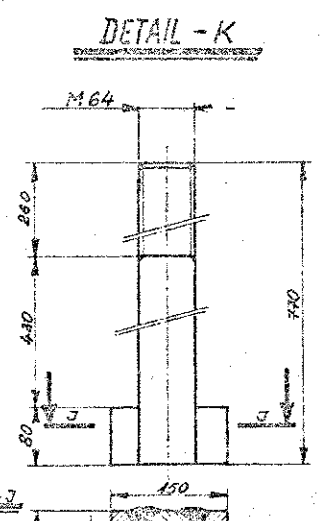
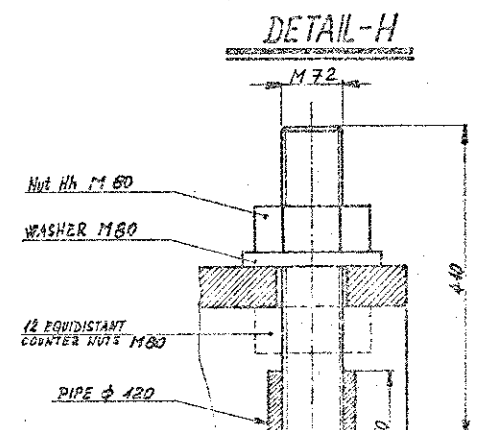
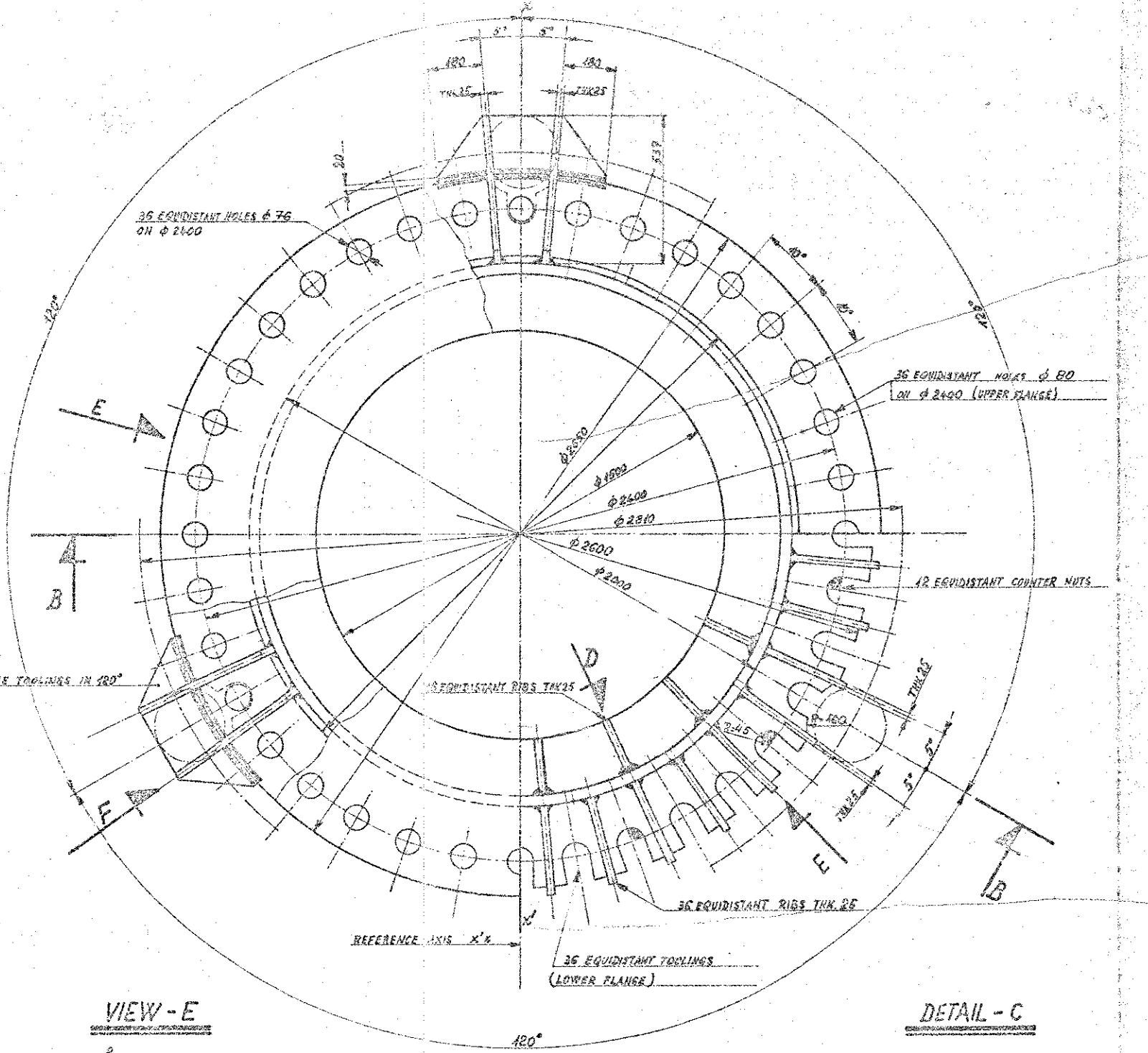
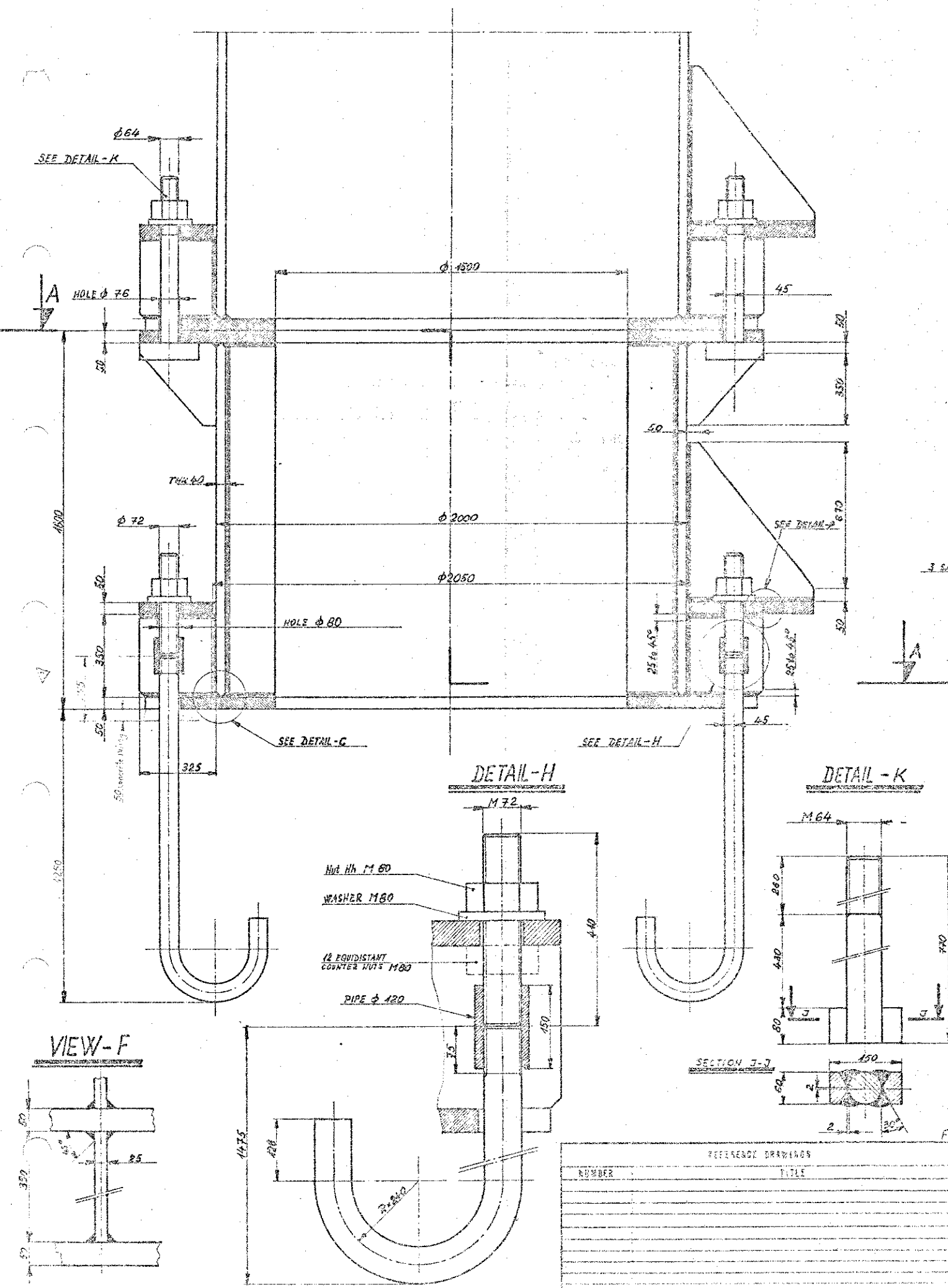


SECTION B-B

SECTION A-A



FOR CONTINUATION SEE DRAWING N° A4-MP-60 4919 AND 5023

NUMBER	REFERENCE DRAWING	TITLE	REV	REVISION	BY	DATE
1			1	FOR APPROVAL		1/6/53
2			2	UP DRAWING		1/15/53
3			3	Added section I-7		1/15/53

THE INFORMATION CONTAINED IN THIS DOCUMENT MUST BE CONSIDERED AS AN INDUSTRIAL SECRET AND THE PROPERTY OF TOTAL OIL MARINE LIMITED. IT IS NOT TO BE DISCLOSED TO ANY OTHER PERSON OR ANYONE NOT EMPLOYED BY TOTAL OIL MARINE LIMITED WITHOUT THE EXPRESS WRITTEN PERMISSION OF THE MANAGER OF TECHNICAL SERVICES OF THIS COMPANY. THE HOLDER OF THE DOCUMENT SHALL BE HELD RESPONSIBLE FOR ALL DENIALS AND FROM THIS STIPULATION.

<p>DP 1</p> <p>601 01 232</p>	<p>C. G. DORIS</p> <p>John Howard</p>	<p>TOTAL OIL MARINE LIMITED</p> <p>LONDON</p> <p>Frige field to Section 4 pipe line</p> <p>Intermediate manifold platform.</p>
<p>SCALE</p> <p>1/50</p>	<p>DATE</p> <p>1/15/53</p>	<p>PROJECT</p> <p>44.M.P.D. 5029</p>

MAIN DECK
COLUMN Ø 2000 H4-H7-B4-B7