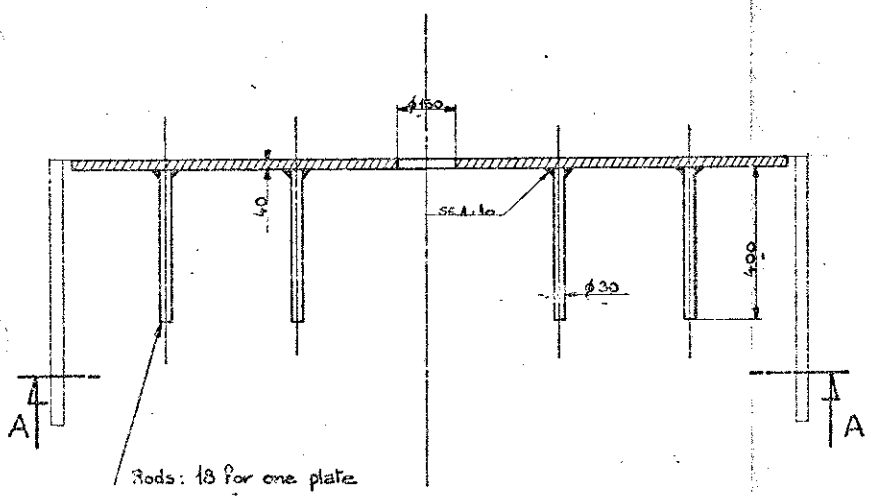
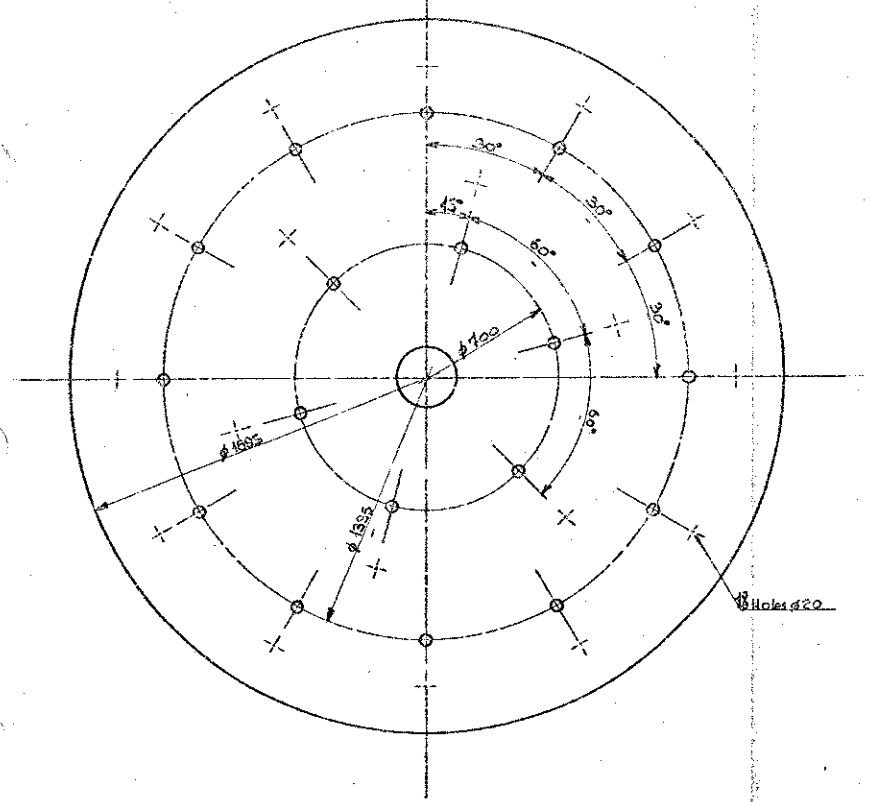


- View AA -

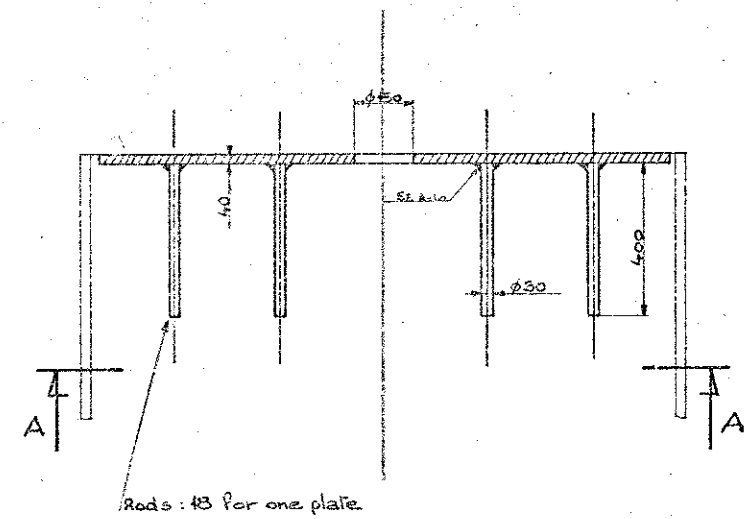
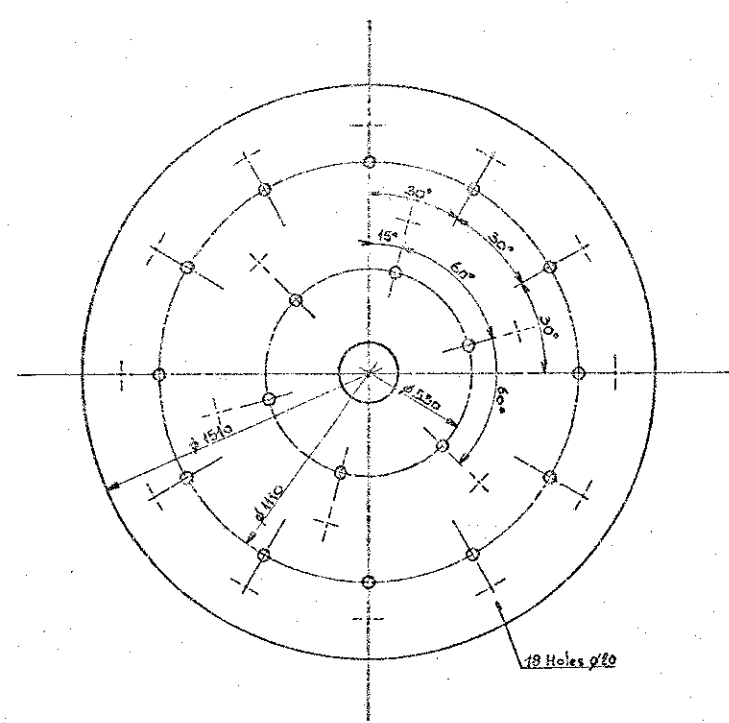


Rods: 18 for one plate

- PLATE FOR COLUMN ϕ 2000 -

STEEL: Plate: ST 52.3N
Rods: E 26.2
NUMBER: 5

- View AA -

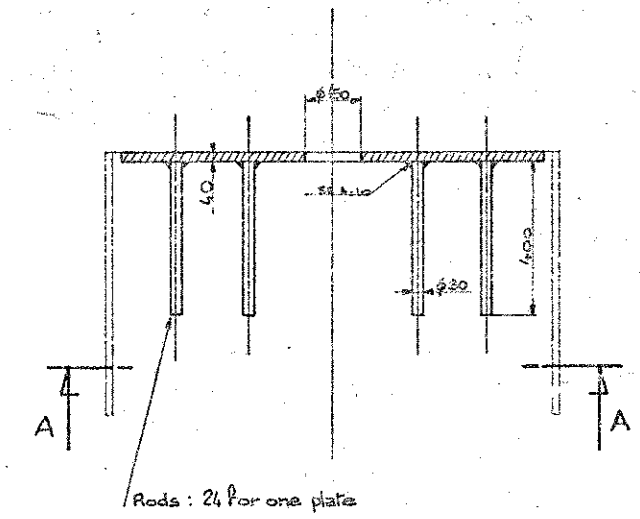
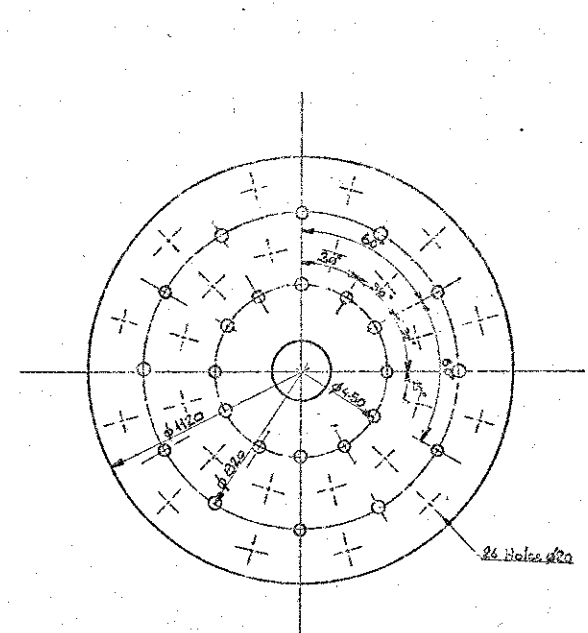


Rods: 18 for one plate

- PLATE FOR COLUMN ϕ 1600 -

STEEL: Plate: ST 52.3N
Rods: E 26.2
NUMBER: 5

- View AA -



Rods: 24 for one plate

- PLATE FOR COLUMN ϕ 1200 -

STEEL: Plate: ST 52.3N
Rods: E 26.2
NUMBER: 4

MP 1
DP 1

THE INFORMATION CONTAINED IN THIS DOCUMENT MUST BE CONSIDERED AS AN INDUSTRIAL SECRET AND THE PROPERTY OF COMPANIE GENERALE D'ETUDE ET CONSTRUCTION NAVALE. IT IS NOT TO BE REPRODUCED OR TRANSMITTED IN ANY FORM OR BY ANY MEANS, ELECTRONIC OR MECHANICAL, INCLUDING PHOTOCOPYING, RECORDING, OR BY ANY INFORMATION STORAGE AND RETRIEVAL SYSTEM. WITHOUT THE WRITTEN PERMISSION OF THE COMPANY, THE HOLDER OF THIS DOCUMENT WILL BE HELD RESPONSIBLE FOR ALL DEVIATIONS FROM THE SPECIFICATION.

TOTAL OIL MARINE LIMITED
LONDON
Fring field to Scotland pipe line
intermediate manifold platform

NUMBER	REFERENCE DRAWINGS	REVISION	BY	DATE
1		FOR APPROVAL		
2		ADDN		
3		UP DATING		
4		ADDED HOLES ϕ 20 AND 12 RDS ON THE PLATE ϕ 2000		
5		UP DATING		

EUROPE ETUDES
C. G. DORIS
John Howard

100 of 121

MAIN DECK
PLATES FOR COLUMNS TOP

SCALE: 1/10
DRAWING NUMBER: 21 H 000 015 5