

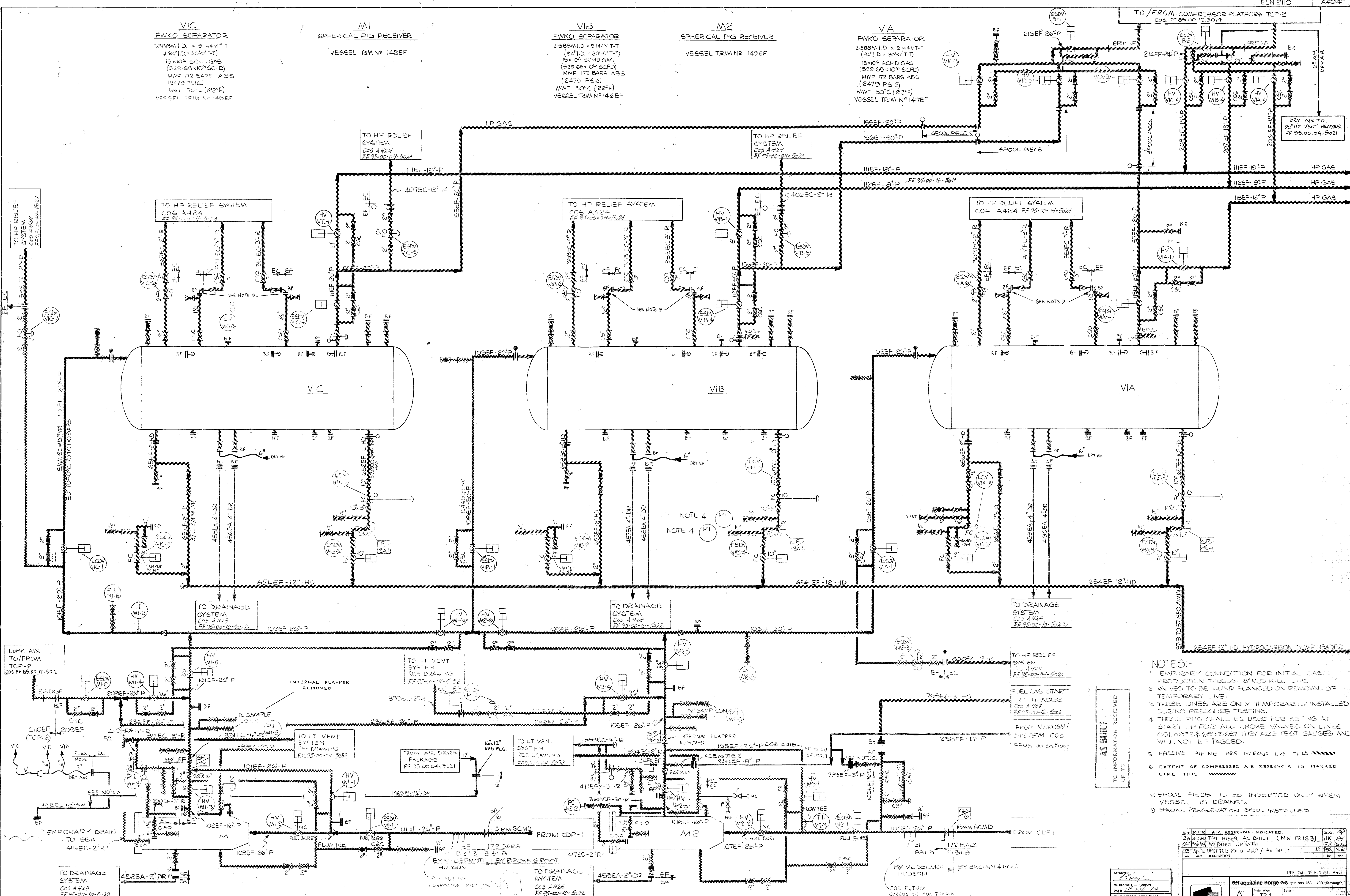
VIC
 FWKO SEPARATOR
 2388M.I.D. x 9144M.T.
 (34" I.D. x 30'0" T)
 15x108 SCMD GAS
 (528.65x108 SCFD)
 MWP 172 BARS ABS
 (2479 PSIG)
 MWT 50°C (122°F)
 VESSEL TRIM N° 145EF

M1
 SPHERICAL PIG RECEIVER
 VESSEL TRIM N° 146EF

VIB
 FWKO SEPARATOR
 2388M.I.D. x 9144M.T.
 (34" I.D. x 30'0" T)
 15x108 SCMD GAS
 (528.65x108 SCFD)
 MWP 172 BARS ABS
 (2479 PSIG)
 MWT 50°C (122°F)
 VESSEL TRIM N° 147EF

M2
 SPHERICAL PIG RECEIVER
 VESSEL TRIM N° 149EF

VIA
 FWKO SEPARATOR
 2388M.I.D. x 9144M.T.
 (34" I.D. x 30'0" T)
 15x108 SCMD GAS
 (528.65x108 SCFD)
 MWP 172 BARS ABS
 (2479 PSIG)
 MWT 50°C (122°F)
 VESSEL TRIM N° 147EF



- NOTES:-**
- 1) TEMPORARY CONNECTION FOR INITIAL GAS... PRODUCTION THROUGH 8" MMD KILL LINE
 - 2) VALVES TO BE BLIND FLANGED ON REMOVAL OF TEMPORARY LINE
 - 3) THESE LINES ARE ONLY TEMPORARILY INSTALLED DURING PRESSURE TESTING
 - 4) THESE PIGS SHALL BE USED FOR SETTING AT START UP FOR ALL CHOKE VALVES ON LINES 6510828 & 6510827 THEY ARE TEST GAUGES AND WILL NOT BE TAGGED
 - 5) PASSIVE PIPING ARE MARKED LIKE THIS [diagonal hatching symbol]
 - 6) EXTENT OF COMPRESSED AIR RESERVOIR IS MARKED LIKE THIS [wavy line symbol]
 - 7) SPOOL PIECE TO BE INSERTED ONLY WHEN VESSEL IS DRAINED
 - 8) SPECIAL PRESERVATION SPOOL INSTALLED

AS BUILT
 TO INFORMATION RECEIVED
 UP TO

APPROVED: [Signature]

ELF AQUITAINE NORGE AS
 INSTITUTION: TP 1
 PROJECT: FWKO SEPARATORS & SPHERICAL PIG RECEIVERS
 SHEET: 26 F

FRIGG FIELD
 DWG. NO. FF 95-00-12-5003

NO.	DATE	BY	REVISIONS
1	18/08/95
2
3
4
5
6
7
8
9
10
11
12
13
14
15
16
17
18
19
20