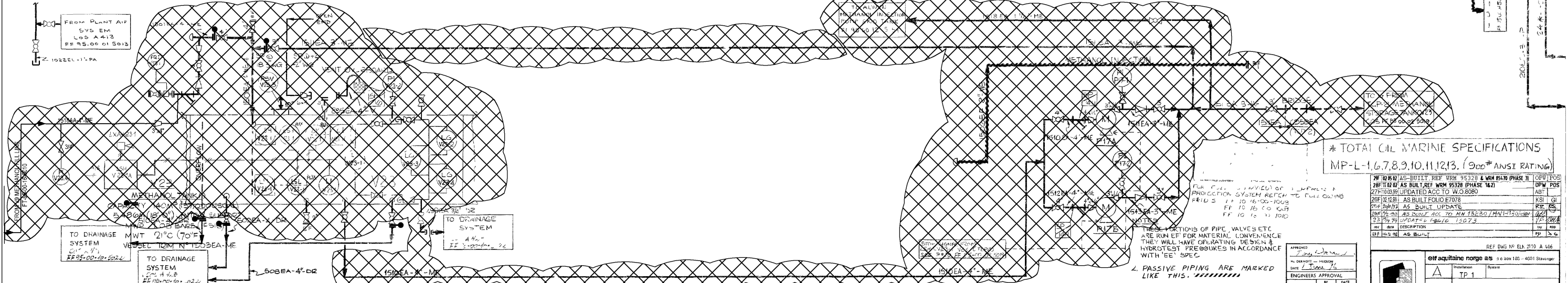
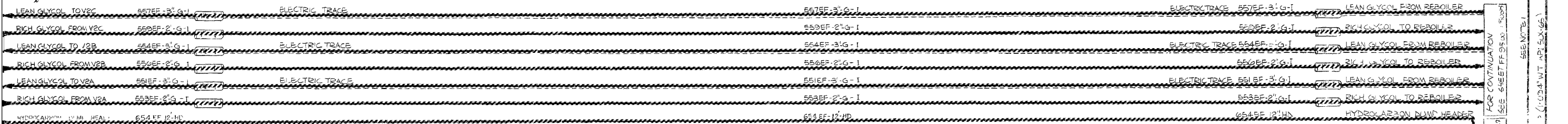
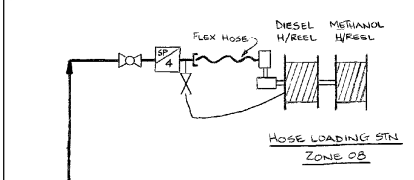


DENOTES INSTRUMENTS TAKEN OUT OF SERVICE. REF. WRM 85470
 DENOTES PIPING THAT HAS BEEN PASSIVATED. REF. WRM 85470



*** TOTAL CIL MARINE SPECIFICATIONS**
 MP-L-1,6,7,8,9,10,11,12,13 (900# ANSI RATING)

24 10 80 01 AS-BUILT REF WRM 95328 & WRM 95170 PHASE 3	CONTR	POS
28 10 10 02 AS-BUILT REF WRM 95328 PHASE 1&2	CONTR	POS
27 10 03 00 UPDATED ACC TO W.O.8080	CONTR	POS
29 10 12 00 AS BUILT FOLIO E7078	CONTR	POS
29 10 12 00 AS BUILT UPDATE	CONTR	POS
29 10 12 00 AS BUILT ACC TO WRM 15230 / MNT/15000	CONTR	POS
23 10 12 00 UPDATED SPEC 15073	CONTR	POS

elf aquitaine norge as
 PIPING & INSTRUMENT DIAGRAM
 METHANOL INJECTION SYSTEM
 FRIGG FIELD

DESIGN	STRUCT	PIPING	ELEC	ME	BY	DATE	REVISIONS	DATE	APP	DESIGN	STRUCT	PIPING	ELEC	ME	BY	DATE	REVISIONS	DATE	APP	
					11	13-87	SEE REVISION LIST													
					10	DL-87	SEE REVISION LIST													
					9	17-86	SEE REVISION LIST													
					13	10-88	SEE REVISION LIST													

1. THESE PORTIONS OF PIPE, VALVES ETC ARE RUN UP FOR MATERIAL CONVENIENCE THEY WILL HAVE OPERATING DESIGN & HYDROTEST PRESSURES IN ACCORDANCE WITH 'EE' SPEC.
2. PASSIVE PIPING ARE MARKED LIKE THIS:
3. CLOSE HV M28 & IF ESDV TCP21 NOT FULLY OPEN