

NOTES
 1. THESE PORTIONS OF PIPE VALVES ETC. ARE RUN UP FOR MATERIAL CONVENIENCE. THEY WILL HAVE OPERATING DESIGN & HYDRO TEST PRESSURES IN ACCORDANCE WITH 'EE' SPEC.

V23
 METHANOL TANK
 CAPACITY: 140M³ (37,000 US GAL)
 5.486M (18'-0") CENTRAL SUPPORT
 MWP: 1.08 BARS (15.5 PSIG)
 MWT: 21°C (70°F)
 VESSEL TRIM N° 1503EA-ME

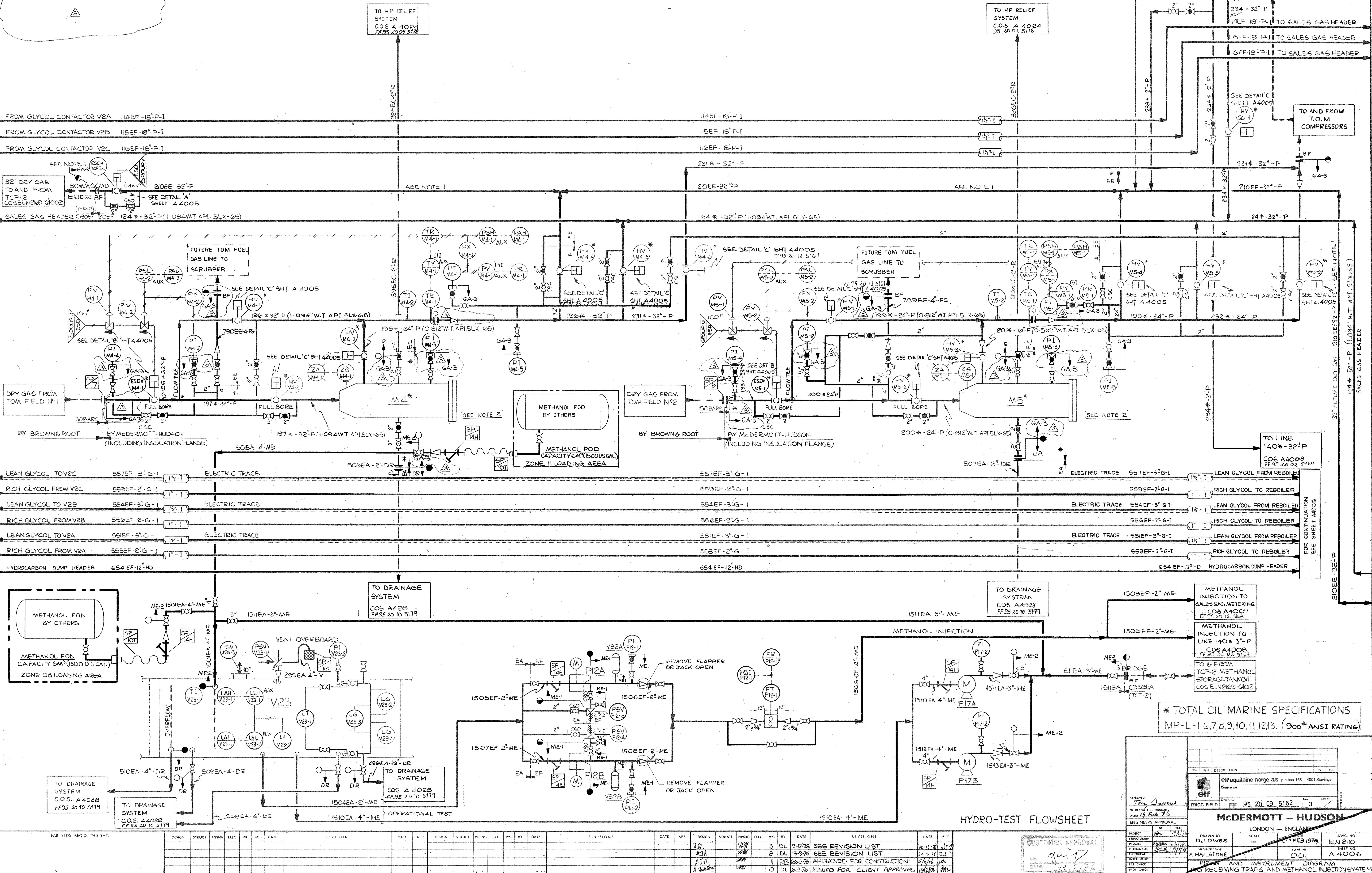
M4
 PIG RECEIVING TRAP
 VESSEL TRIM N° 202*-P

P12A&B
 METHANOL METERING PUMPS
 284 - 10° L/HR AT 153 BARS ΔP
 (1.25-4.4 USGPM AT 22.5 PSIG ΔP)

V32A&B
 METHANOL PULSATION DAMPENERS

P17A & B
 METHANOL TRANSFER PUMP
 2271 L/M AT 3.08 BARS
 (60 US GPM AT 30 PSIG)

M5
 PIG RECEIVING TRAP
 VESSEL TRIM N° 203*-P



*** TOTAL OIL MARINE SPECIFICATIONS**
 MP-L-1,6,7,8,9,10,11,12,13. (900# ANSI RATING)

APPROVED: *Tony Dawson*
 MCDERMOTT - HUDSON
 LONDON - ENGLAND
 DRAWN BY: D. LOWES
 DATE: 19 FEB 1976
 SHEET NO. A4006

NO.	DATE	BY	CHKD.	REVISIONS
1	9-12-75	JFW	JFW	ISSUED FOR CLIENT APPROVAL
2	10-2-76	AKH	JFW	SEE REVISION LIST
3	10-3-76	AKH	JFW	SEE REVISION LIST
4	10-3-76	AKH	JFW	APPROVED FOR CONSTRUCTION
5	10-3-76	AKH	JFW	ISSUED FOR CLIENT APPROVAL