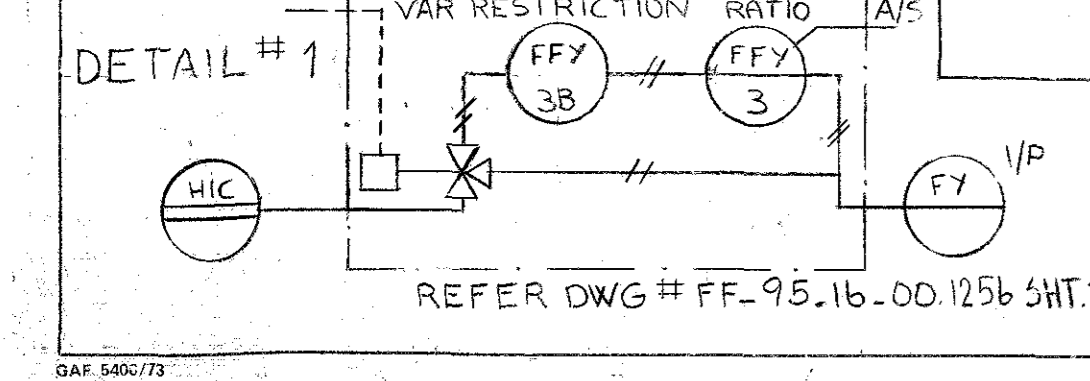
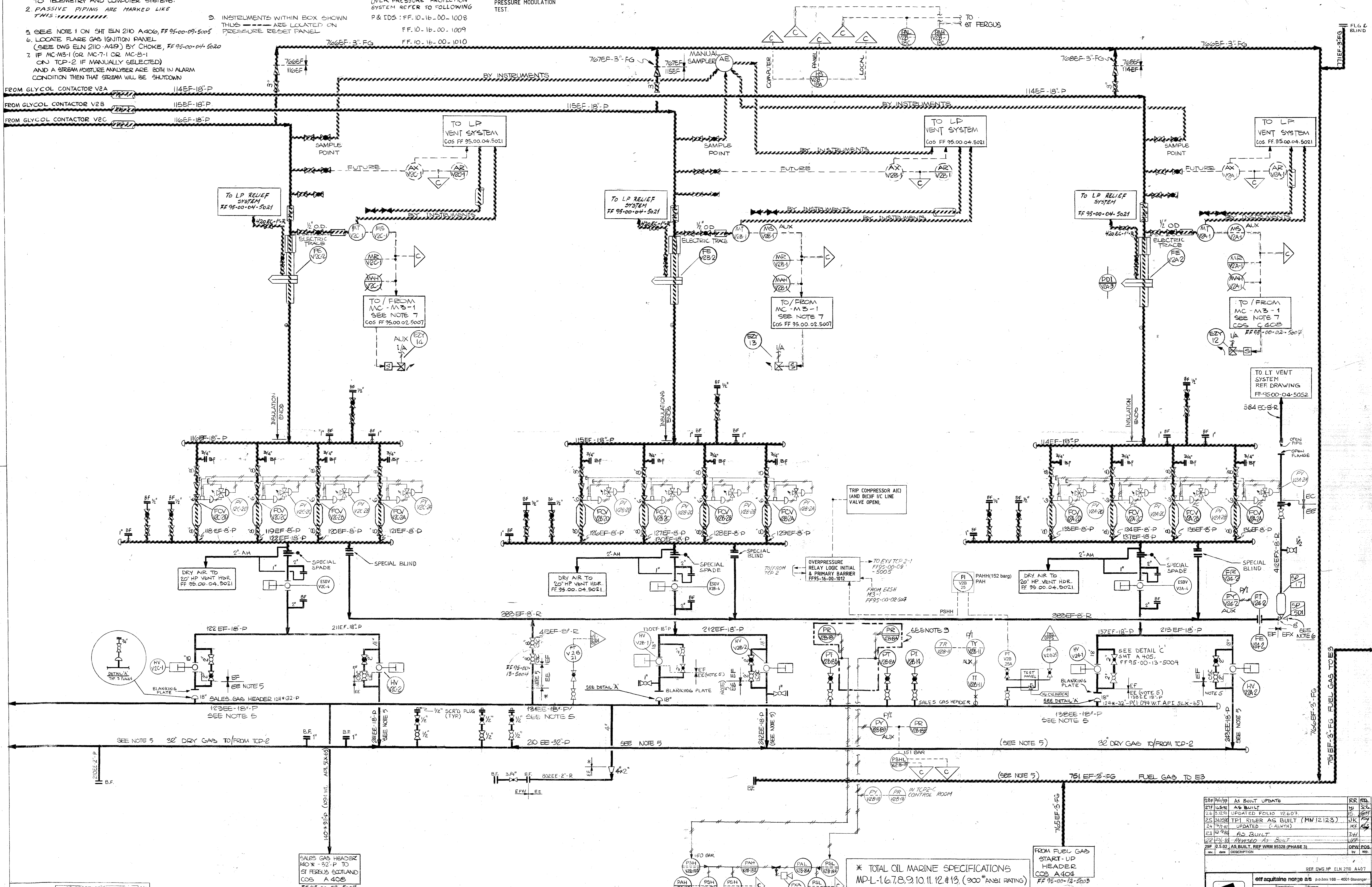


- NOTES: 1. SIGNAL TRANSMISSION IS VIA TRANSFORMER ROOM TO TELEMETRY AND COMPUTER SYSTEMS.  
2. PASSIVE PIPING ARE MARKED LIKE THIS: [Symbol]  
3. SEE NOTE 1 ON SHT ELN 2110 A400, FF 95-00-09-5005  
4. LOCATE FLARE GAS IGNITION PANEL (SEE DWG ELN 2110 A409) BY CHOKE, FF 95-00-04-5020  
5. IF MC-M3-1 (OR MC-T-1 OR MC-B-1) ON TCP-2 IF MANUALLY SELECTED AND A STREAM MOISTURE ANALYSER AGE BOTH IN ALARM CONDITION THEN THAT STREAM WILL BE SHUTDOWN  
6. INSTRUMENTS WITHIN BOX SHOWN THUS: [Symbol] ARE LOCATED ON PRESSURE RESET PANEL  
7. FOR FULL OVER VIEW OF OVER PRESSURE PROTECTION SYSTEM REFER TO FOLLOWING P & IDS: FF.10-16-00-1008 FF.10-16-00-1009 FF.10-16-00-1010  
8. FOR OPSS DAILY PRESSURE MODULATION TEST.



NO.	BY	DATE	REVISIONS
18	SI	9.2.79	CONTROL OF GAS FLOW BY AN ADDITIONAL INSTRUMENTIC TRANSDUCER ON SECTION GAS LINE (P&ID NO. 95A1)
17	SI	15.10.79	ISSUE D FOR 'AS BUILT'
16	RB	20.7.79	SEE REVISION LIST
15	UP	2.3.77	SEE REVISION LIST

NO.	BY	DATE	REVISIONS
14	RB	7.9.76	SEE REVISION LIST
13	LV	7.6.76	APPROVED FOR CONSTRUCTION
12	UP	17.9.76	ISSUED FOR CURSIVE APPROVAL
11	UP	9.9.76	RE ISSUED ON PINK COPY

REV.	DESCRIPTION	REV. NO.
28	AS BUILT UPDATE	28
27	AS BUILT	27
26	UPDATED FOLIO 12.6.07	26
25	TPI RISER AS BUILT (MW 12.123)	25
24	UPDATED (C-ALPHA)	24
23	AS BUILT	23
22	REVISED AS BUILT	22
21	AS BUILT, REF WRM 95328 (PHASE 3)	21

REF DWG. NO. ELN 2110 A407

elf aquitaine norge a.s. p.o. box 168 - 4001 Stavanger

Installation: TP-1 System

Documentation: 25270

PIPING & INSTRUMENT DIAGRAM

SALES GAS METERING SYSTEM

FRIGG FIELD FF 95-00-12-5006 29F

\* TOTAL OIL MARINE SPECIFICATIONS  
MPL-1,6,7,8,9,10,11,12,13 (300 ANSI RATING)

FROM FUEL GAS START-UP HEADER COS A404  
FF 95-00-12-5003