

V10
DIESEL BULK STORAGE
CAPACITY 390M³ (103,000USGALS)
6.430M(21.4) DIA CENTRAL SUPPORT
MWP 1.05 BARS (15.19)
MWT 22°C (71°F)
VESSEL TRIM No 885EA

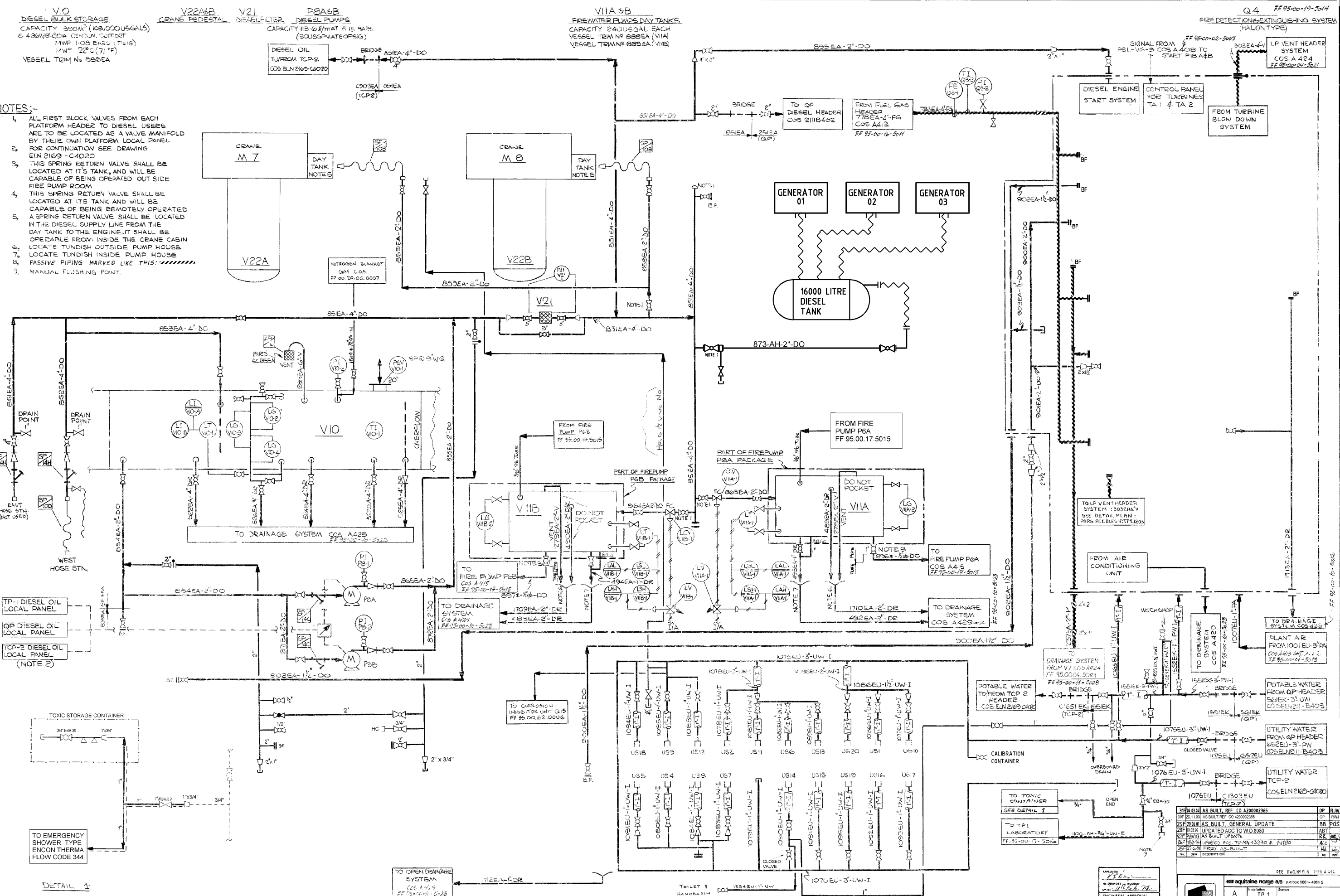
V22A/B
CRANE PEDESTAL
DIESEL FILTER
DIESEL PUMPS
CAPACITY 115.62M³ MAT 4.15 VARS
(30USGP/WATS/GP/S/G)

P8A/B
DIESEL OIL
TU/FROM TCP-2
COS BLN 2163-CA020

VIIA & B
FIREWATER PUMPS DAY TANKS
CAPACITY 240USGAL EACH
VESSEL TRIM No 888EA (VIIA)
VESSEL TRIM No 889EA (VIB)

NOTES:-

1. ALL FIRST BLOCK VALVES FROM EACH PLATFORM HEADER TO DIESEL USERS ARE TO BE LOCATED AS A VALVE MANIFOLD BY THEIR OWN PLATFORM LOCAL PANEL FOR CONTINUATION SEE DRAWING EUN 2169-C4020
2. THIS SPRING RETURN VALVE SHALL BE LOCATED AT ITS TANK, AND WILL BE CAPABLE OF BEING OPERATED OUT SIDE FIRE PUMP ROOM
3. THIS SPRING RETURN VALVE SHALL BE LOCATED AT ITS TANK AND WILL BE CAPABLE OF BEING REMOTELY OPERATED A SPRING RETURN VALVE SHALL BE LOCATED IN THE DIESEL SUPPLY LINE FROM THE DAY TANK TO THE ENGINE, IT SHALL BE OPERABLE FROM INSIDE THE CRANE CABIN LOCATE TUNDSH OUTSIDE PUMP HOUSE
4. LOCATE TUNDSH INSIDE PUMP HOUSE
5. PASSIVE PIPING MARKED LIKE THIS:
6. MANUAL FLUSHING POINT.



DETAIL 1

NO.	DATE	REVISIONS
1	23.07.77	SEE REVISION LIST
2	11.09.78	SEE REVISION LIST
3	10.09.78	SEE REVISION LIST
4	01.12.78	SEE REVISION LIST
5	17.02.79	Mod. Drainage System From V48...

NO.	DATE	REVISIONS
1	08.12.77	ISSUED FOR AS BUILT
2	15.12.77	ISSUED FOR AS BUILT
3	18.12.77	ISSUED FOR AS BUILT

NO.	DATE	REVISIONS	OP.	BY
1	08.12.77	ISSUED FOR AS BUILT	OP.	BY
2	15.12.77	ISSUED FOR AS BUILT	OP.	BY
3	18.12.77	ISSUED FOR AS BUILT	OP.	BY

elf **frigg field**
 A TP 1
 2877
 UTILITY FLOW SHEET
 DIESEL AND GAS TURBINE
 GENERATION SYSTEMS
 31F 1/1