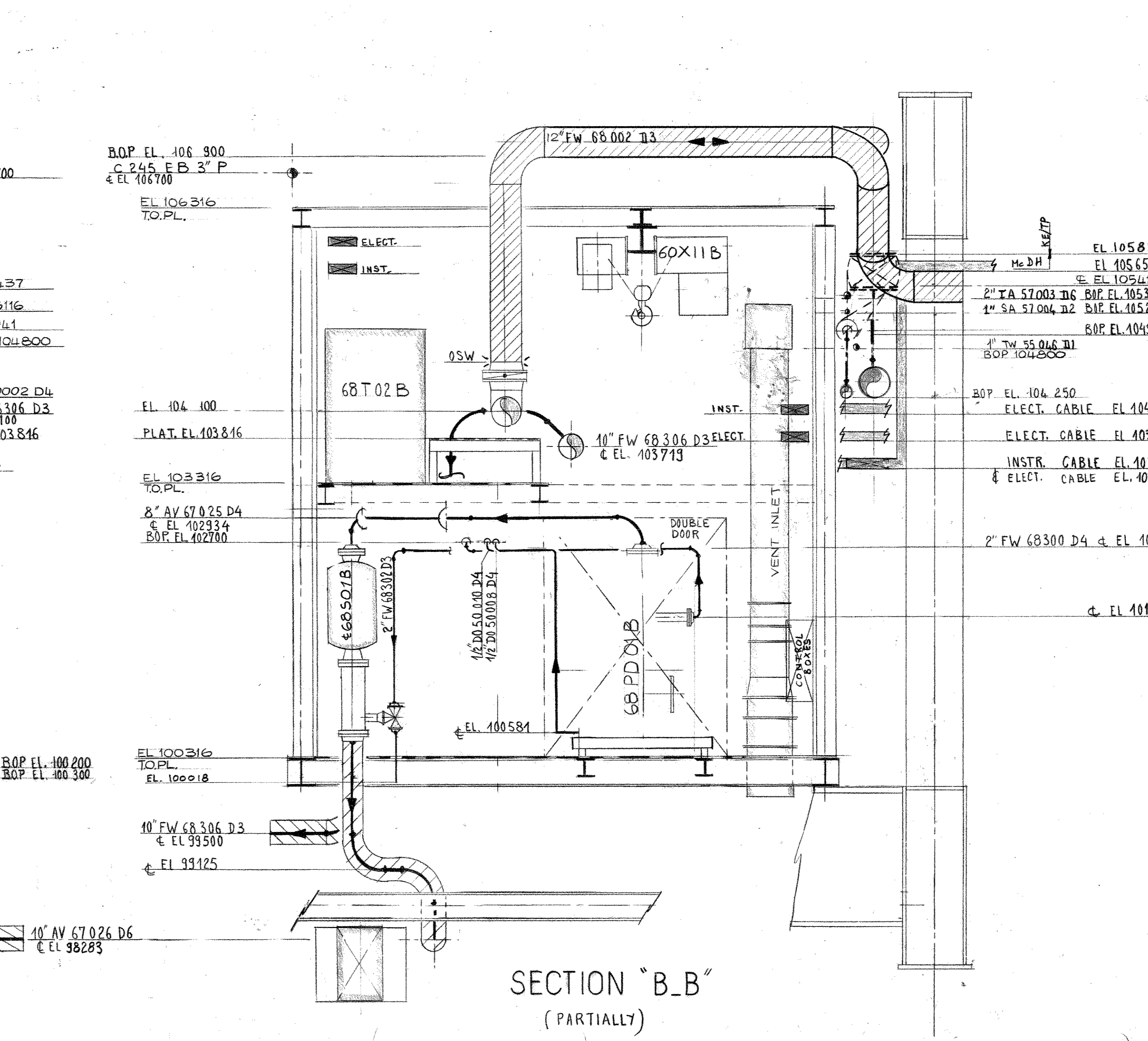
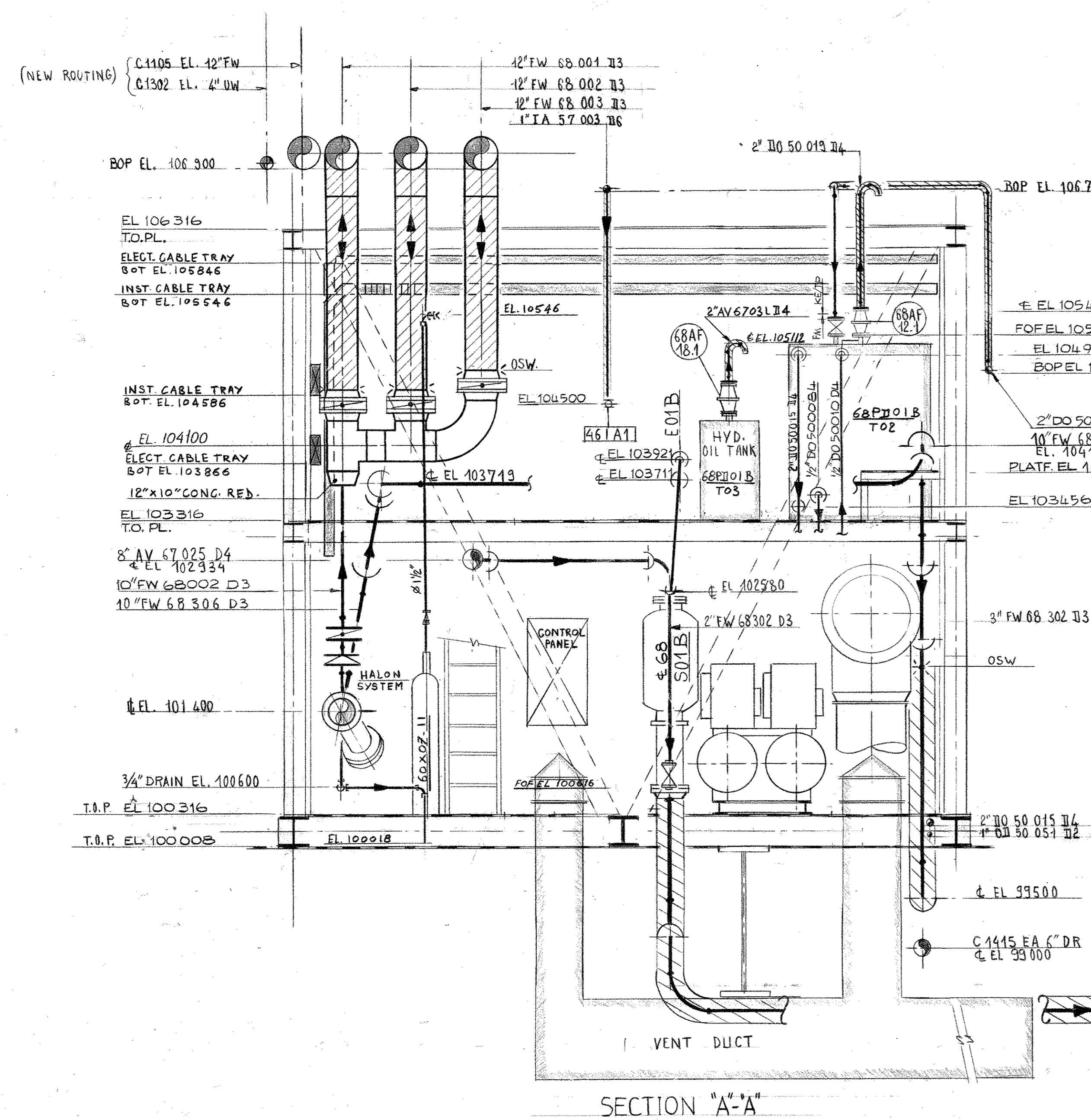
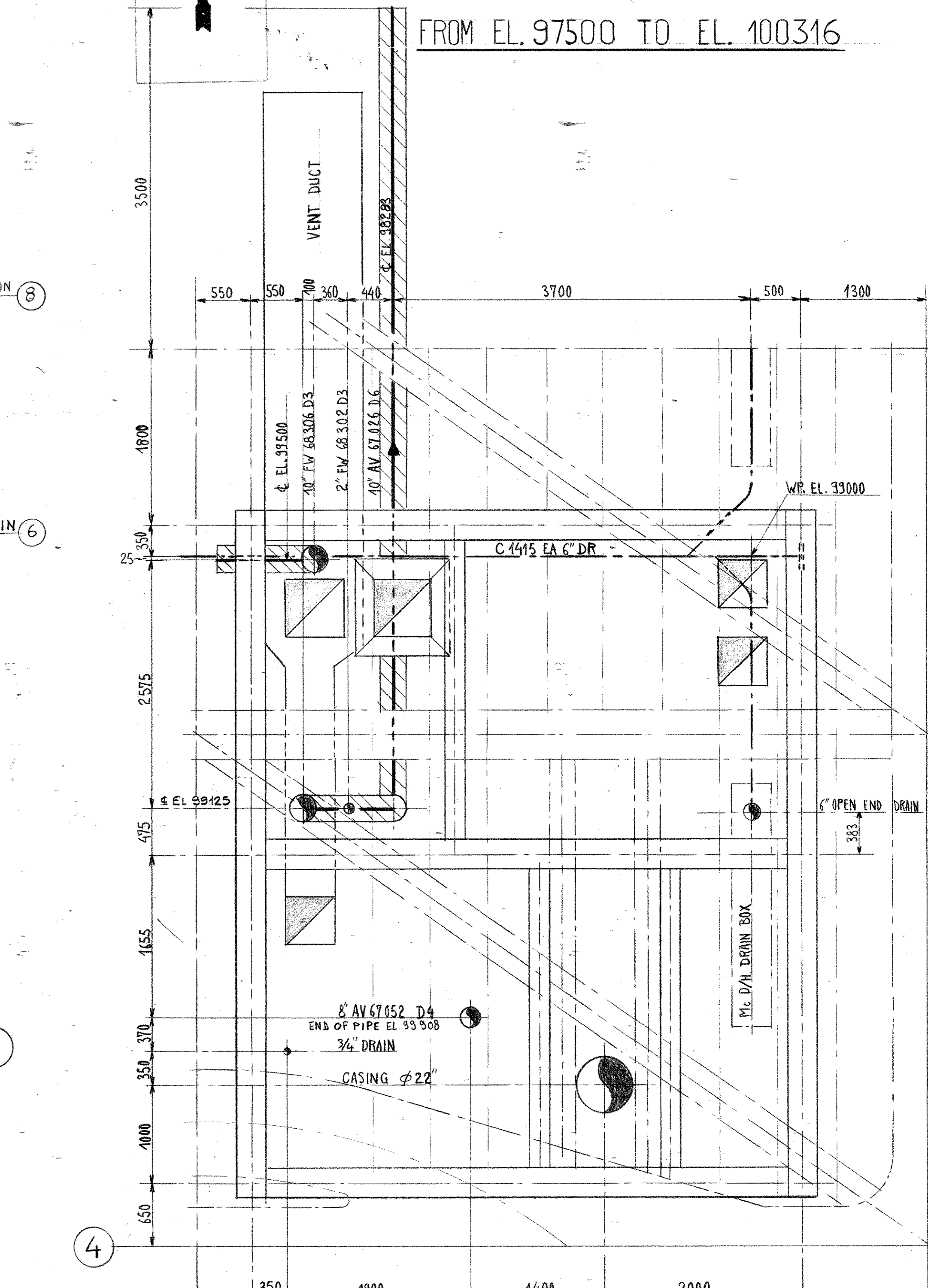
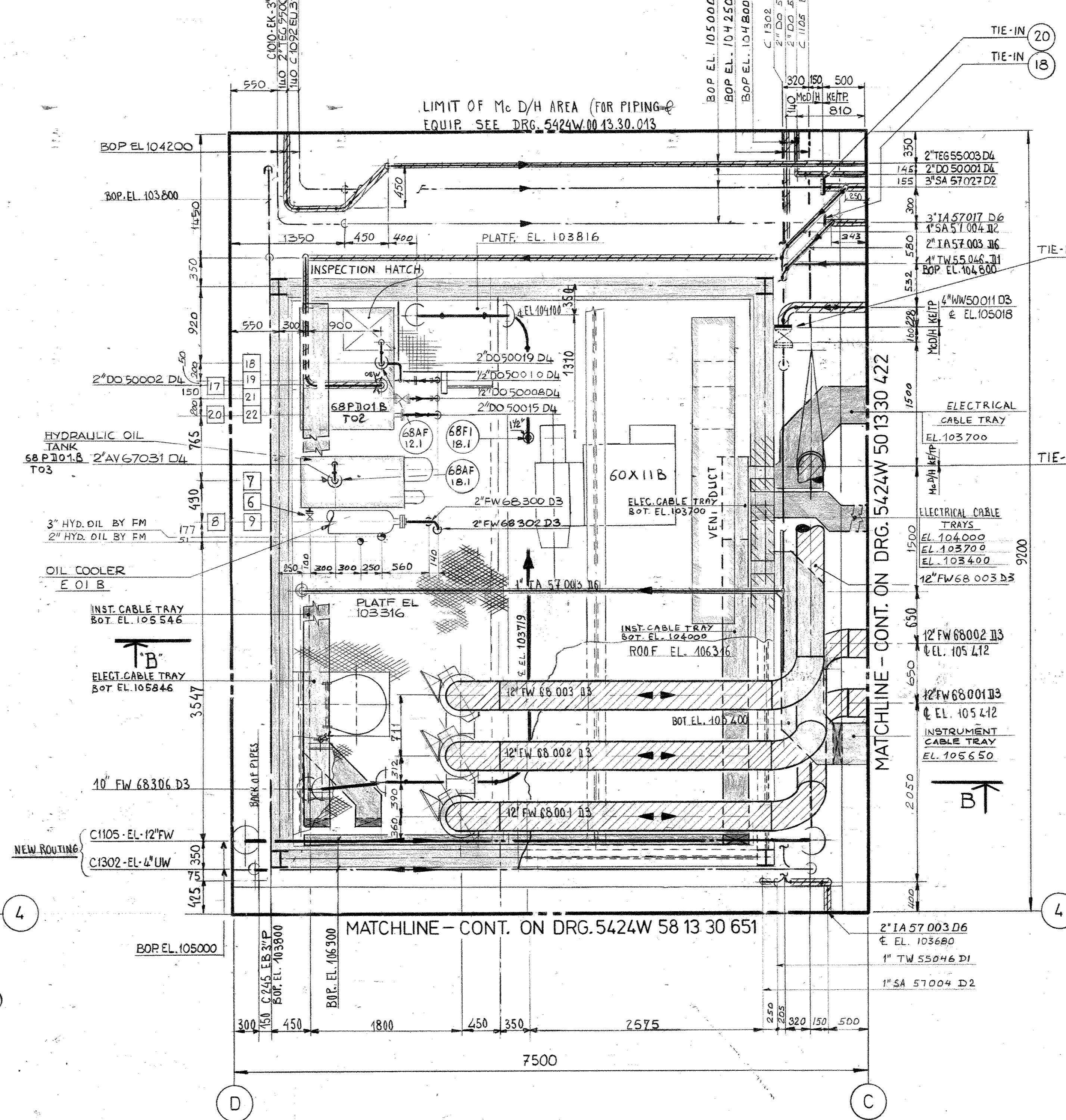
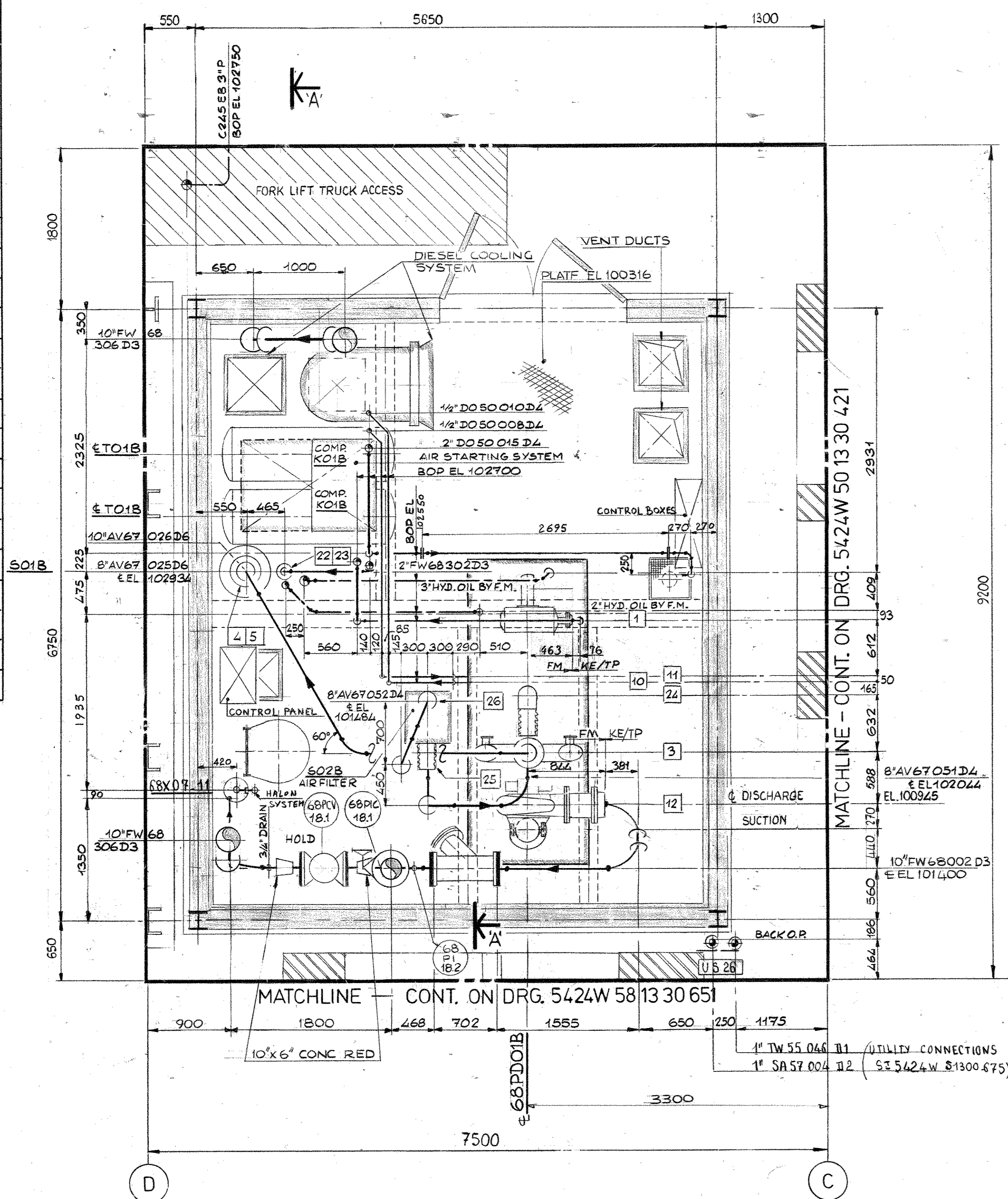


PK	SIZE	RATING	TYPE/FACE	ELEV. TOP OF FLG.	DESIGNATION
68 PD01B					
1	2"	150°	RF	4101825	COOLING WATER OUTLET
3	8"	150°	RF	102526	EXHAUST
10	1/4"	HOLD		4100881	FUEL RETURN
11	1/4"	HOLD		4100881	FUEL SUCTION
12	10"	150°	RF	4100845	DISCHARGE
24	8"	FLEXIBLE CONN.		4102044	AIR INLET
68 T02B					
17	2"	150°	RF	105286	OIL FILLING
18	2"	150°	RF	105416	VENT
19	1/2"	150°	RF	4104841	RETURN OIL
20	2"	150°	RF	4104841	OVERFLOW
21	1/4"	SW		4103566	SUCTION
22	2"	150°	RF	4103456	DRAIN
68 T03B					
6	1"	—	—	4103451	DRAIN
7	2"	150°	RF	104406	VENT
68 E01B					
8	2"	150°	RF	4103921	WATER OUTLET
9	2"	150°	RF	4103711	WATER INLET
68 S01B					
4	8"	150°	RF	102526	INLET
5	10"	150°	RF	100602	OUTLET
22	2"	150°	RF	100624	WATER INLET
23	2"	150°	RF	100654	WATER OUTLET
68 S02B					
25	8"	FLEXIBLE CONN.		4100372	AIR INLET
26	8"	FLEXIBLE CONN.		—	AIR OUTLET

FROM EL.100 316 TO EL.103 000

FROM EL.103 000 TO EL.107848



NOTES

- INDICATES SITE INSTALLED PIPE WORK
- INDICATES EXISTING PIPE WORK

REF. DRAWINGS

M. DERRIOTT/HUDSON PIPING ARR. ELN 2169 C5008 Rev.3 OF THIS (EXISTING) AREA C 5009 Rev.4
 KEY PLAN 5424 W 11.13.30.001
 CELLAR DECK PLOT PLAN 5424 W 00.00.60.72

elf aquitaine norge a/s p.o. box 188 - 4001 Stavanger
 Contractor **KE / TP**
 FRIGG FIELD Draw. no. **FF 82 20 00 1033** Rev. 1

NO.	DATE	DESCRIPTION	BY	CHKD	APP.
5	04.08	AS BUILT	DP	DP	
4	03.78	UP DATED CABLE TRAYS	DP	DP	
3	03.78	APPROVED FOR CONSTRUCTION	DP	DP	
2	03.78	UP DATED	DP	DP	
1	03.78	PRELIMINARY ISSUE	DP	DP	

ELF NORGE - FRIGG FIELD - TCP2 - COMPRESSION

KVAERNER - TECHNIP TCP2

PIPING ARRANGEMENT
 AREA 46
 FIRE PUMP ROOM

THIS DRAWING IS THE PROPERTY OF KVAERNER ENG. AND TECHNIP - IT SHALL NOT BE REPRODUCED OR ITS CONTENTS DISCLOSED WITHOUT THE PERMISSION OF MENTIONED PROPRIETORS.

CONTRACT UNIT CODE NUMBER
5424W681330461 3

CHECKED BY: **W** SCALE: 1:300
 SHEET: 1/4 **ELF TECHNIP/KVAERNER**
 CONTRACT S 139 CONTRACT 524 W CONTRACT 480