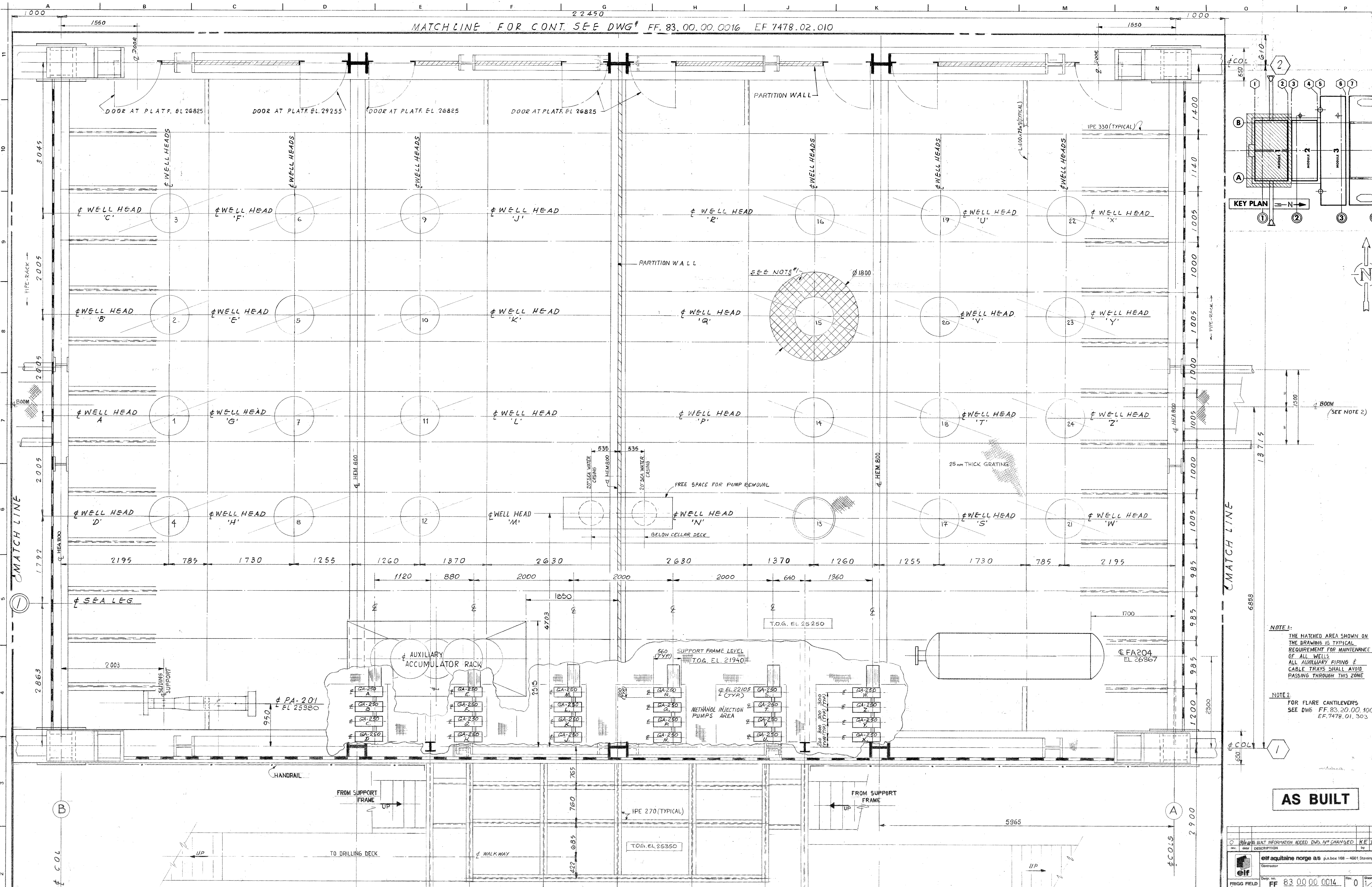


MATCHLINE FOR CONT. SEE DWG# FF.83.00.00.0016 EF.7478.02.010



NOTE 1:
THE HATCHED AREA SHOWN ON THE DRAWING IS TYPICAL REQUIREMENT FOR MAINTENANCE OF ALL WELLS. ALL AUXILIARY PIPING & CABLE TRAYS SHALL AVOID PASSING THROUGH THIS ZONE.

NOTE 2:
FOR FLARE CANTILEVERS SEE DWG# FF.83.20.00.1007 EF.7478.01.303

AS BUILT

REV.	DESCRIPTION	DATE
0	AS BUILT INFORMATION ADDED DWS N° CHANGED	16/02/2016

Contractor: **elf aquitaine norge as** p.o. box 188 - 4001 Stavanger

Draw. no.: **FF 83 00 00 0014** Rev: 0

N°	TITLE
FF.83.00.00.0009	CELLAR DECK GEN. ARRANGEMENT
FF.83.00.00.0012	AREA KEY PLAN
EF.7478.01.11	ELEVATION TRUSS 2

REVISION LIST-3

- Position of accumulator rack revised.
- Elevation of FA-204 given.
- Elevation of PA-201 was 28975
- Position of 20" risers revised.

NO.	REV.	ISSUE	DESCRIPTION	DWN	CHK'D.	INST.	STRESS	PROC.	PROJ.	DATE
7478	6	SFTL	"AS BUILT"	Jc	Jc					
7478	5	SFTL	MOD. PLATFORM & STAIR FROM SUPPORT FRAME	Jc	Jc					
7478	4	SFTL	FA204 RELOCATED, U/E STEEL & SHEETING ADDED	Jc	Jc					
7478	3	SFTL	MINOR REVISIONS - SEE LIST	bhills	db					
7478	2	SFTL	APPROVED FOR CONSTRUCTION	Louvis	D. Ester					
7478	1	SFTL	FOR APPROVAL	Spon						

UVE SOCIÉTÉ INDUSTRIELLE D'ENTREPRISE
EE LUMMUS SOCIÉTÉ FRANÇAISE DES TECHNIQUES LUMMUS
ELF NORGE
FRIGG FIELD E17 JOB 1.40-G2-DP2 DECK MODULE EQUIPMENT
 SCALE 1:25 JOB: F.7478

PLOT PLAN MODULE#1

DRAWING No. **EF.7478-0**

THIS DRAWING, INCLUDING ANY PATENTED OR PATENTABLE FEATURES, EMBODIES CONFIDENTIAL INFORMATION OF THE LUMMUS COMPANY AND ITS USE IS RESTRICTED TO THE USER'S AGREEMENT NOT TO REPRODUCE THE DRAWING IN WHOLE OR IN PART, NOR THE MATERIAL DESCRIBED THEREON, NOR TO USE THE DRAWING FOR ANY PURPOSE OTHER THAN SPECIFICALLY PERMITTED IN WRITING BY THE LUMMUS COMPANY.