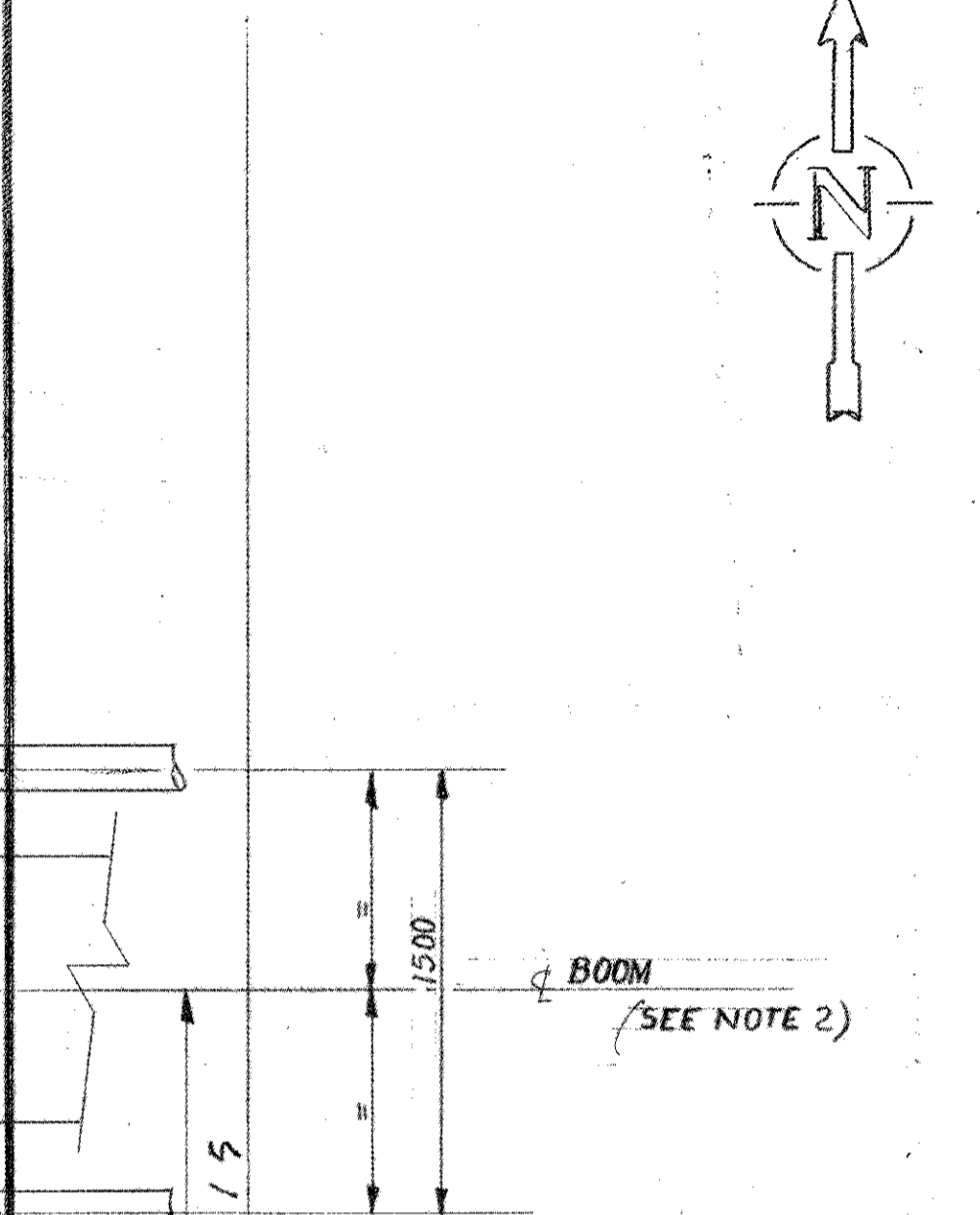
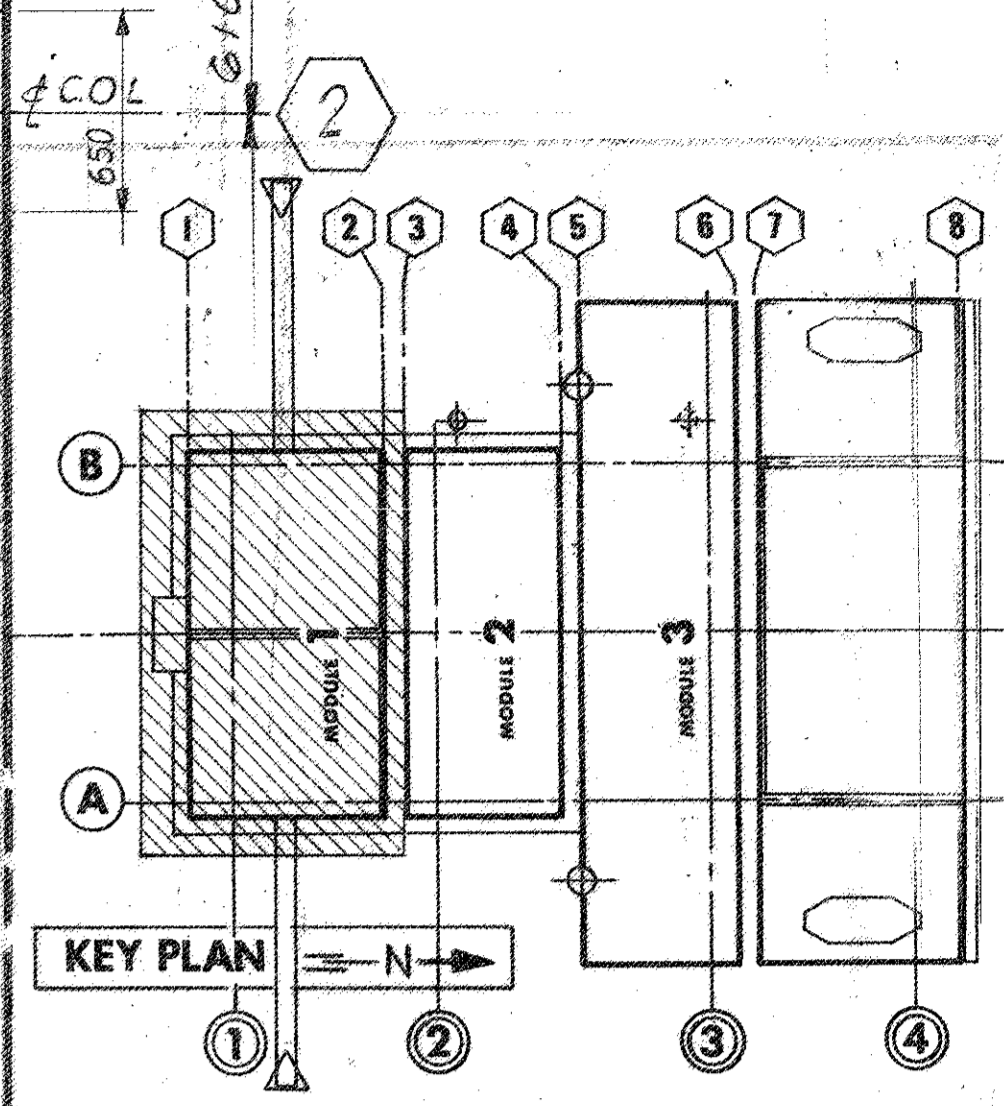
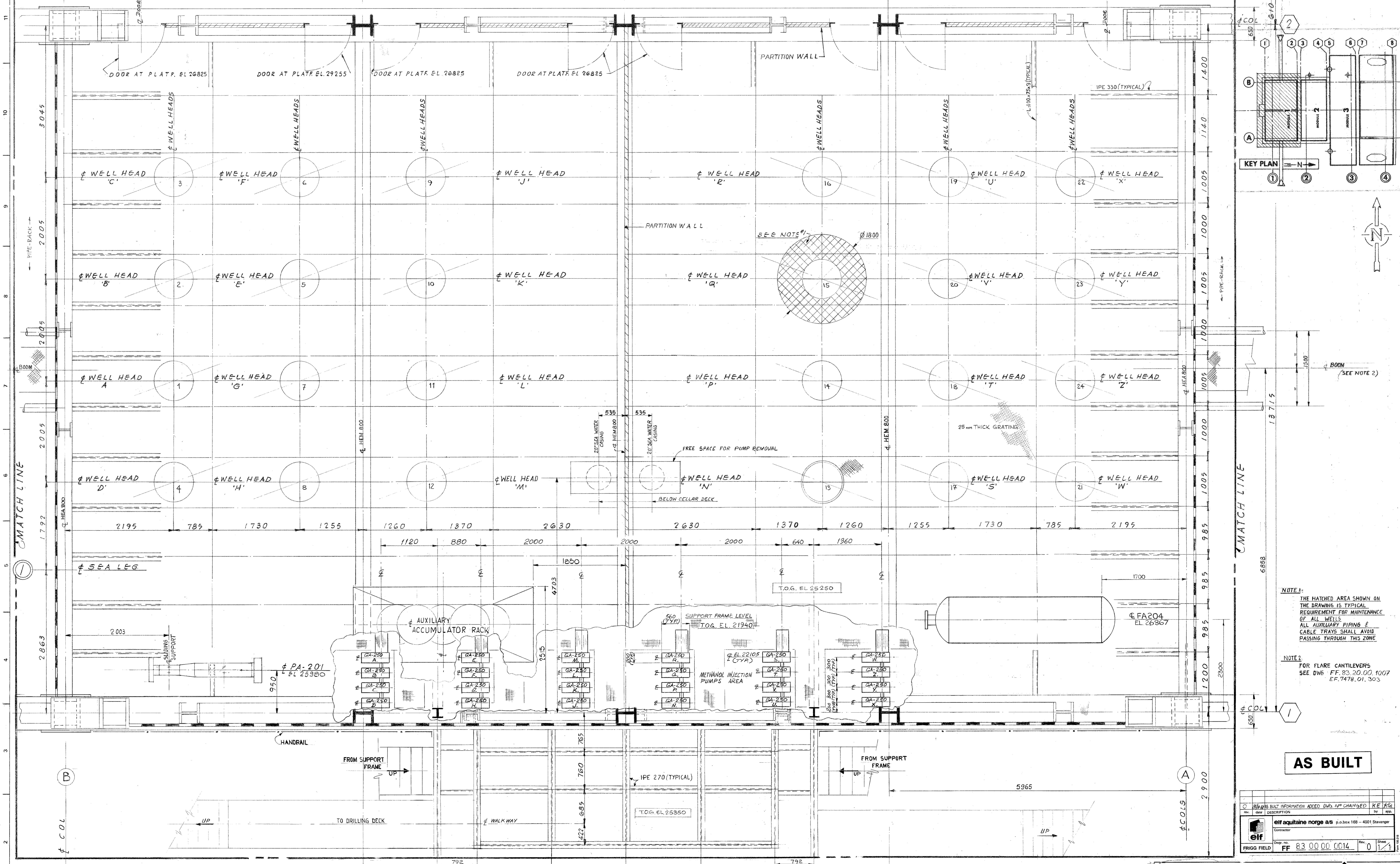


MATCHLINE FOR CONT. SEE DWG# FF.83.00.00.0016 EF.7478.02.010



NOTE 1:
THE HATCHED AREA SHOWN ON THE DRAWING IS TYPICAL REQUIREMENT FOR MAINTENANCE OF ALL WELLS. ALL AUXILIARY PIPING & CABLE TRAYS SHALL AVOID PASSING THROUGH THIS ZONE.

NOTE 2:
FOR FLARE CANTILEVERS SEE DWG: FF.83.20.00.1007 EF.7478.01.303

AS BUILT

NO.	DATE	DESCRIPTION	BY	CHK
0		ISSUED FOR CONSTRUCTION		

EIF SOCIÉTÉ INDUSTRIELLE ET D'ENTREPRISE
ELF NORGE SOCIÉTÉ FRANÇAISE DES PRODUITS LIÉGÉS
COMSIP ENTREPRISE

FRIGG FIELD E17 JOB 1.40.G2-DP2 DECK MODULE EQUIPMENT

REFERENCE DWG. LIST	
N°	TITLE
FF.83.00.00.0009	CELLAR DECK GEN. ARRANGEMENT
FF.83.00.00.0012	AREA KEY PLAN
EF.7478.01.11	ELEVATION TRUSS 2

- REVISION LIST-3
- 1) Position of accumulator rack revised.
 - 2) Elevation of PA-204 given.
 - 3) Elevation of PA-201 was 25975
 - 4) Position of 20" risers revised.

JOB	REV.	ISSUE	DESCRIPTION	OWN	CHK. D.	INST.	STRESS PROC.	PROJ. ENG.	DRW. ENG.	P.D. M.P.D.	DATE
7478	6	SFTL	"AS BUILT"	Jc	Jc						
7478	5	SFTL	MOD. PLATFORM & STAIR FROM SUPPORT FRAME	Jc	Jc						
7478	4	SFTL	PA204 RELOCATED, IPE STEEL & SHEETING ADDED.	Jc	Jc						
7478	3	SFTL	MINOR REVISIONS - SEE LIST	bh/bb	ed						
7478	2	SFTL	APPROVED FOR CONSTRUCTION	Louis	Dierker						
7478	1	SFTL	FOR APPROVAL	Spar							

DRAWING No. EF.7478-0

THIS DRAWING, INCLUDING ANY PATENTED OR PATENTABLE FEATURES, EMBODIES CONFIDENTIAL INFORMATION OF THE LUMMUS COMPANY AND ITS USE IS CONSIDERED UNLAWFUL WITHOUT THE WRITTEN AGREEMENT OF THE LUMMUS COMPANY. THE USER'S AGREEMENT NOT TO REPRODUCE THE DRAWING IN WHOLE OR IN PART, NOR THE MATERIAL DESCRIBED THEREON, NOR TO USE THE DRAWING FOR ANY PURPOSE OTHER THAN SPECIFICALLY PERMITTED IN WRITING BY THE LUMMUS COMPANY.