

VIC
FWKO SEPARATOR
2388M.I.D. x 9144M.T.T
(34" I.D. x 30'-0" T.T)
15x10° SCMD GAS
(529.65x10° SCFD)
MWP 172 BARS ABS
(2479 PSIG)
MWT 50°C (122°F)
VESSEL TRIM No 148EF

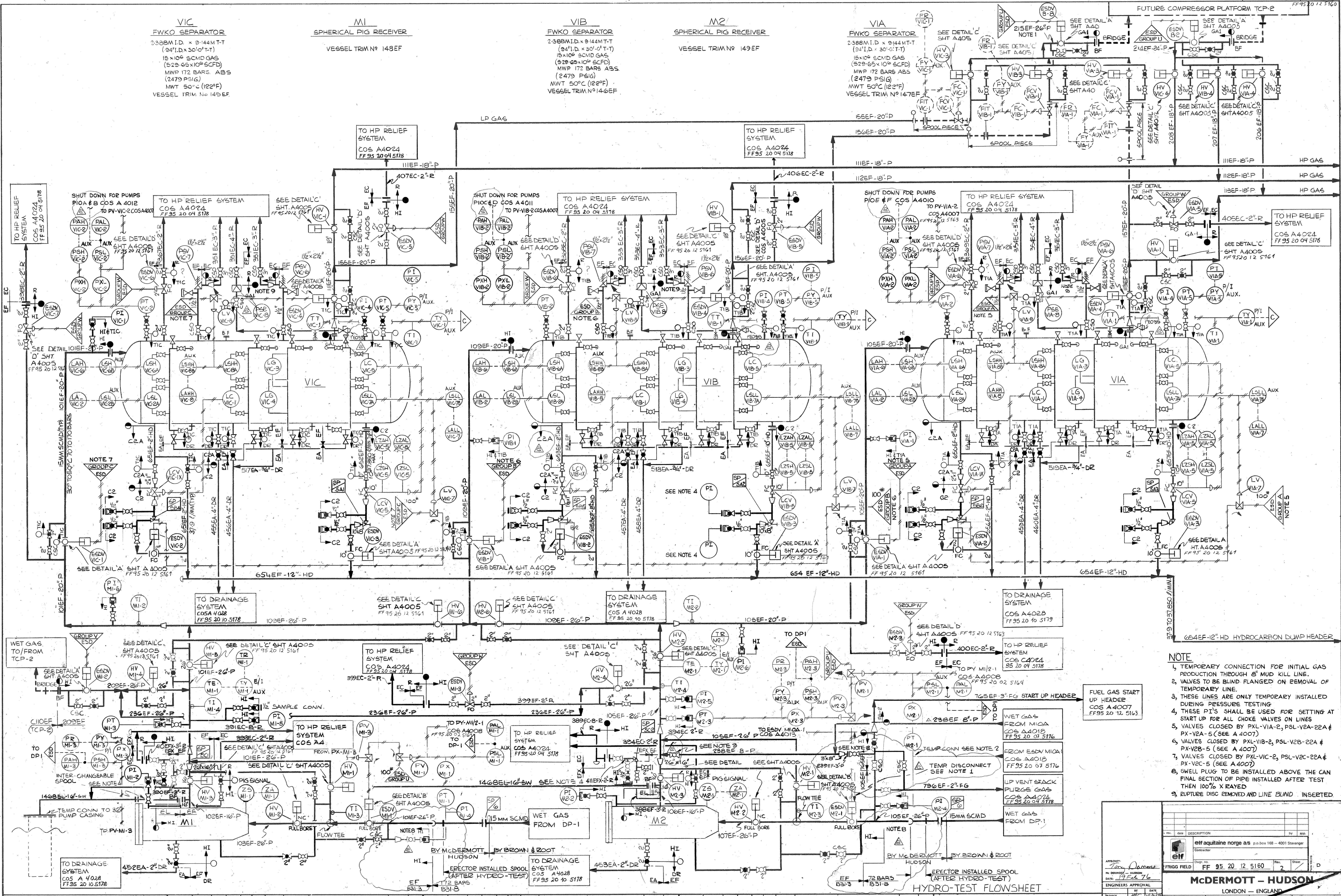
M1
SPHERICAL PIG RECEIVER
VESSEL TRIM No 148EF

VIB
FWKO SEPARATOR
2388M.I.D. x 9144M.T.T
(34" I.D. x 30'-0" T.T)
15x10° SCMD GAS
(529.65x10° SCFD)
MWP 172 BARS ABS
(2479 PSIG)
MWT 50°C (122°F)
VESSEL TRIM No 147EF

M2
SPHERICAL PIG RECEIVER
VESSEL TRIM No 149EF

VIA
FWKO SEPARATOR
2388M.I.D. x 9144M.T.T
(34" I.D. x 30'-0" T.T)
15x10° SCMD GAS
(529.65x10° SCFD)
MWP 172 BARS ABS
(2479 PSIG)
MWT 50°C (122°F)
VESSEL TRIM No 147EF

FUTURE COMPRESSOR PLATFORM TCP-2



- NOTE**
1. TEMPORARY CONNECTION FOR INITIAL GAS PRODUCTION THROUGH 'B' MUD KILL LINE.
 2. VALVES TO BE BLIND FLANGED ON REMOVAL OF TEMPORARY LINE.
 3. THESE LINES ARE ONLY TEMPORARY INSTALLED DURING PRESSURE TESTING.
 4. THESE PI'S SHALL BE USED FOR SETTING AT START UP FOR ALL CHOKE VALVES ON LINES PX-V2A-5 (SEE A 4007).
 5. VALVES CLOSED BY PXL-VIA-2, PSL-V2A-22A & PX-V2A-5 (SEE A 4007).
 6. VALVES CLOSED BY PXL-VIB-2, PSL-V2B-22A & PX-V2B-5 (SEE A 4007).
 7. VALVES CLOSED BY PXL-VIC-2, PSL-V2C-22A & PX-V2C-5 (SEE A 4007).
 8. SWELL PLUG TO BE INSTALLED ABOVE THE CAN FINAL SECTION OF PIPE INSTALLED AFTER TEST THEN 100% X RAYED.
 9. RUPTURE DISC REMOVED AND LINE BLIND INSERTED.

HYDRO-TEST FLOWSHEET

APPROVED: *[Signature]*
BY: *[Signature]*

McDERMOTT - HUDSON
LONDON - ENGLAND

PROJECT: *[Blank]*
DRAWN BY: *[Blank]*
SCALE: *[Blank]*
DATE: *[Blank]*

REVISIONS:

NO.	DATE	DESCRIPTION
1	16-9-76	ISSUED FOR REVISION LIST
2	16-9-76	APPROVED FOR CONSTRUCTION
3	16-9-76	ISSUED FOR CLIENT APPROVAL

FAB. STDS. REQ'D. THIS SHT.

DESIGN	STRUCT	PIPING	ELEC.	HK	BY	DATE	REVISIONS	DATE	APP.	DESIGN	STRUCT	PIPING	ELEC.	HK	BY	DATE	REVISIONS	DATE	APP.	